

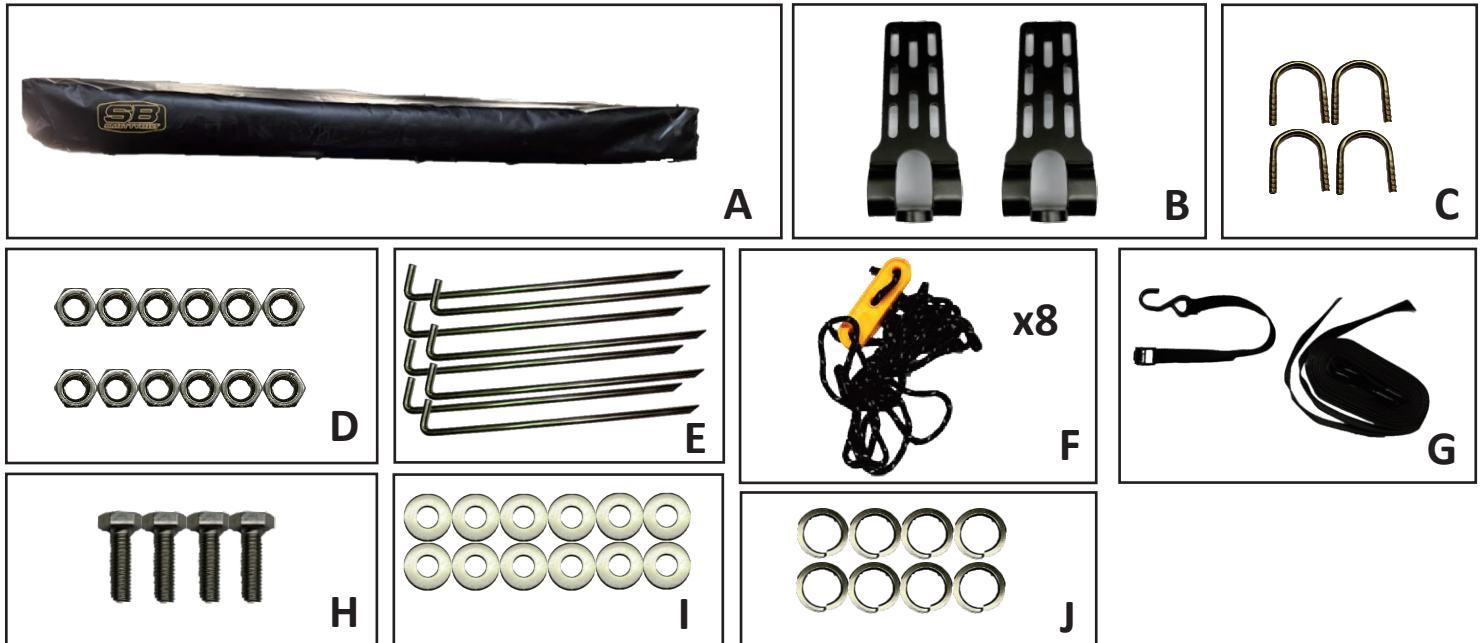


WWW.SMITTYBILT.COM

Installation Instructions
270°Awning-PASS SIDE
Part #: S/B2796

NOTE: Be sure to check that all hardware and components are present before attempting to install this part. If you are missing any hardware or components, please contact technical support.

Part Description	QTY	ID	Part Description	QTY	ID
270° AWNING	1	A	TIE DOWN	8	F
MOUNT BRACKET	2	B	ANCHOR STRAP KIT	1	G
M8-1.25 1.5" I.D. U-BOLT	4	C	M8-1.25X25MM HEX HEAD BOLT	4	H
M8-1.25 NUT	12	D	M8 FLAT WASHER	12	I
STAKE	8	E	M8 SPLIT LOCK WASHER	8	J
			*Actual size not shown		



For Technical Support/Warranty Information please call 1-800-776-0767
 Smittybilt, 1017 W. 600 N. STE 4, Ogden, UT 84404



WWW.SMITTYBILT.COM

Installation Instructions 270°Awning-PASS SIDE Part #: S/B2796

NOTE: Carefully read this entire instruction manual thoroughly before attempting to assemble and/or install this product. Photos may differ slightly from your vehicle and the parts you receive; the installation process will remain the same.

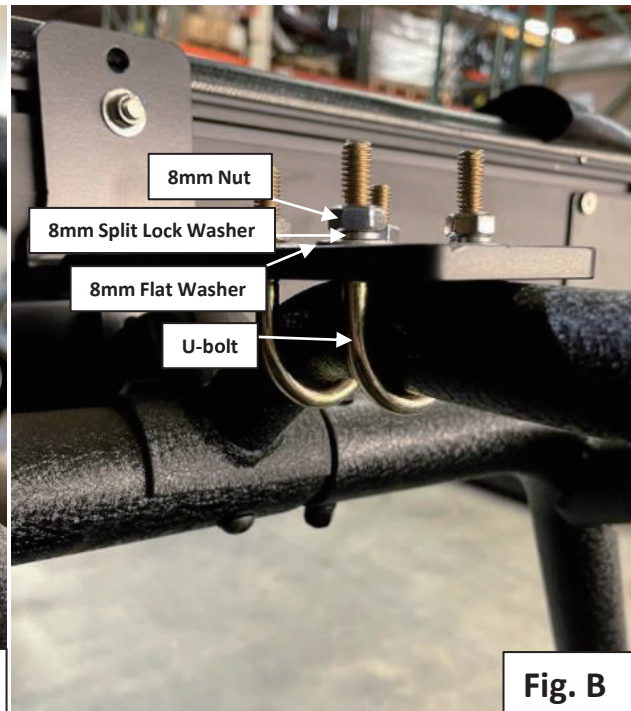
NOTE: This awning is designed for use in fair weather conditions. Heavy winds, rain, or snow will damage the awning. Always use tie downs and stakes even if winds are not expected.

Part 1: Mounting the awning.

The 270° Awning is designed to be mounted in several different ways depending on the type of equipment your vehicle has. **You may need to purchase your own hardware on some set-ups. You may use supplied hardware or other high-quality hardware. You may need to drill through your crossbars depending on what system you are mounting to.**

Step 1: Find the correct size U-bolts that fit the diameter of the bars on your roof rack. Install the U-bolts from the underside of the crossbar. Secure the **Mounting Bracket** to your roof rack using the included hardware. Each U-bolt gets **(2) 8mm flat washers, (2) 8mm split lock washers, and (2) 8mm nuts.** See **Figure A.**

Note: Each of the 2 mounting brackets will use **(2) U-bolts** as shown in **Figure B.**



For Technical Support/Warranty Information please call 1-800-776-0767
Smittybilt, 1017 W. 600 N. STE 4, Ogden, UT 84404



WWW.SMITTYBILT.COM

Installation Instructions
270°Awning-PASS SIDE
Part #: S/B2796

In addition, the U-bolts can also be mounted in the other direction. As shown in **Figure C**. This will allow mounting to the side rails of the SRC roof rack or something similar.

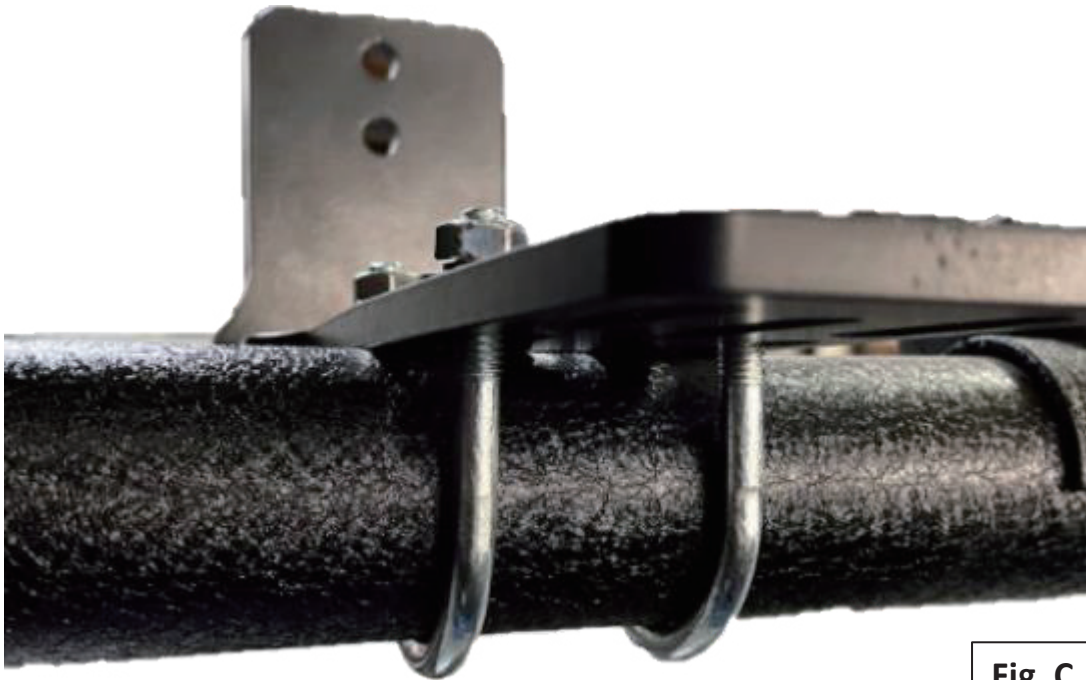


Fig. C

Step 2: Open the Velcro covers on the end of the awning (**Figure D**). Remove the rubber plugs from the top and bottom awning tracks (**Figure E**).

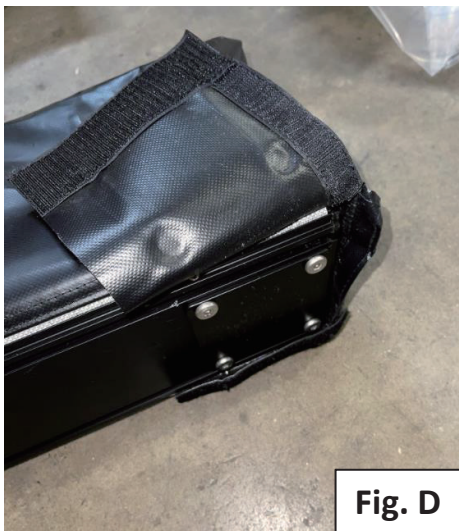


Fig. D



Fig. E

For Technical Support/Warranty Information please call 1-800-776-0767
Smittybilt, 1017 W. 600 N. STE 4, Ogden, UT 84404



WWW.SMITTYBILT.COM

Installation Instructions
270°Awning-PASS SIDE
Part #: S/B2796

Step 3: Install the M8 hardware into the tracks of the awning. Using (4) 8mm-1.25x25mm. Each track will use 2 bolts. **(Figure F)**

Slide (2) M8-1.25x25mm hex head bolts into each track. 6 total bolts will be used.

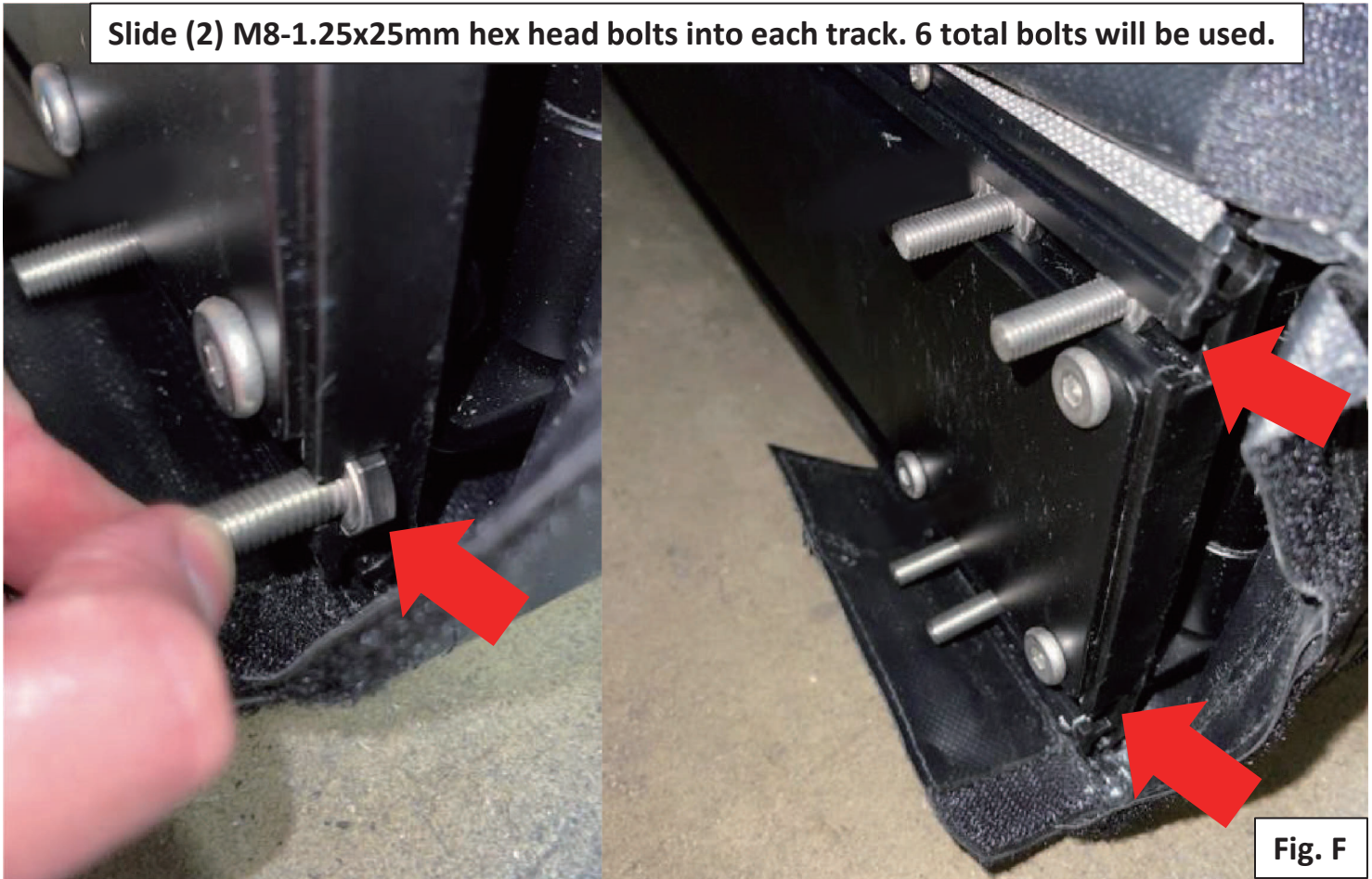


Fig. F

Reinsert the rubber plugs back into the tracks once the bolts have been inserted. **(Figure G)**



Fig. G

For Technical Support/Warranty Information please call 1-800-776-0767
Smittybilt, 1017 W. 600 N. STE 4, Ogden, UT 84404



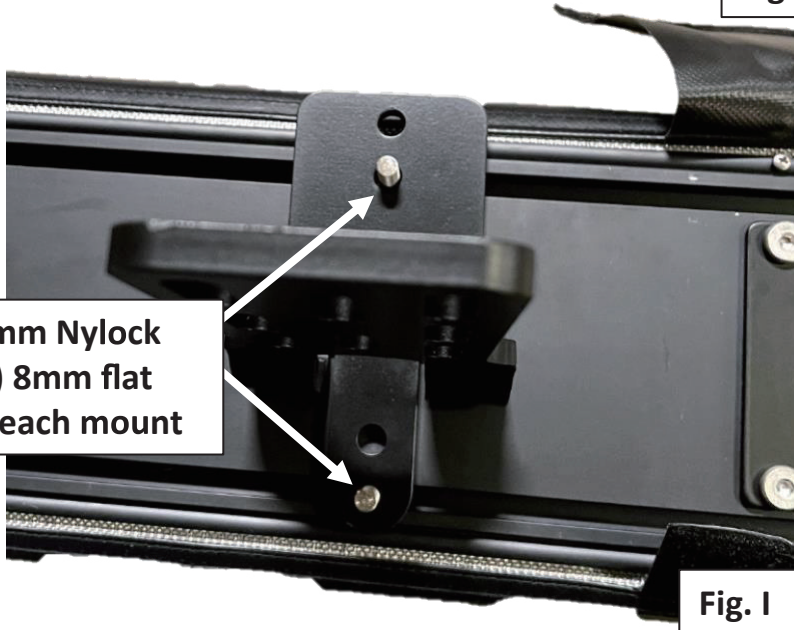
WWW.SMITTYBILT.COM

**Installation Instructions
270°Awning-PASS SIDE
Part #: S/B2796**

Step 4: Mount the awning by sliding the bolts into position on the awning tracks. Line all 4 bolts up with the corresponding holes on the **(2) Mounting Brackets**. Line up the rear of the awning as close to the rear of the vehicle as possible **(Figure H)**. Secure the awning to the **Mounting Brackets** using **(4) 8m flat washers** and **(4) 8mm Nylock Nuts**. **(Figure I)**



Fig. H



Install (2) 8mm Nylock Nuts and (2) 8mm flat washers on each mount

Fig. I

Step 5: Torque down all the hardware using the spec sheet on **Page 13**. **Periodically check and retorque all hardware. This should be done per the care instructions on Page 14**
Installation is complete.

For Technical Support/Warranty Information please call 1-800-776-0767
Smittybilt, 1017 W. 600 N. STE 4, Ogden, UT 84404



WWW.SMITTYBILT.COM

**Installation Instructions
270°Awning-PASS SIDE
Part #: S/B2796**

Part 2: Opening the awning. (Setup)

Step 1: Unzip cover and fold cover over the top of the awning.

Step 2: Locate and release the Velcro straps holding the awning in place. **(Figure J)**
The awning will unroll as shown in **(Figure K)**.



Fig. J



Fig. K

For Technical Support/Warranty Information please call 1-800-776-0767
Smittybilt, 1017 W. 600 N. STE 4, Ogden, UT 84404



WWW.SMITTYBILT.COM

**Installation Instructions
270°Awning-PASS SIDE
Part #: S/B2796**

Step 3: Grab the first section of the awning and swing it out towards the rear of the vehicle. Then grab the second section of the awning and swing it towards the front of the vehicle. **(Figure L)**



Fig. L

Step 4: Use the two most outer poles to hold open the awning. **(Figure M)**



Fig. M

For Technical Support/Warranty Information please call 1-800-776-0767
Smittybilt, 1017 W. 600 N. STE 4, Ogden, UT 84404



WWW.SMITTYBILT.COM

Installation Instructions
270°Awning-PASS SIDE
Part #: S/B2796

Step 5: Once the outer two awning poles are set up, attach the anchor straps to the ends of the awning (**Figure N**) and secure them to either the vehicle or directly together. (**Figure O**)



For Technical Support/Warranty Information please call 1-800-776-0767
Smittybilt, 1017 W. 600 N. STE 4, Ogden, UT 84404



WWW.SMITTYBILT.COM

Installation Instructions
270°Awning-PASS SIDE
Part #: S/B2796

Step 5: Work your way back towards the front of the awning, drop each support leg of the awning down as you go (**Figure P**). Adjust the height of the legs by twisting them counterclockwise to allow adjustment and clockwise to lock. (**Figure Q**)

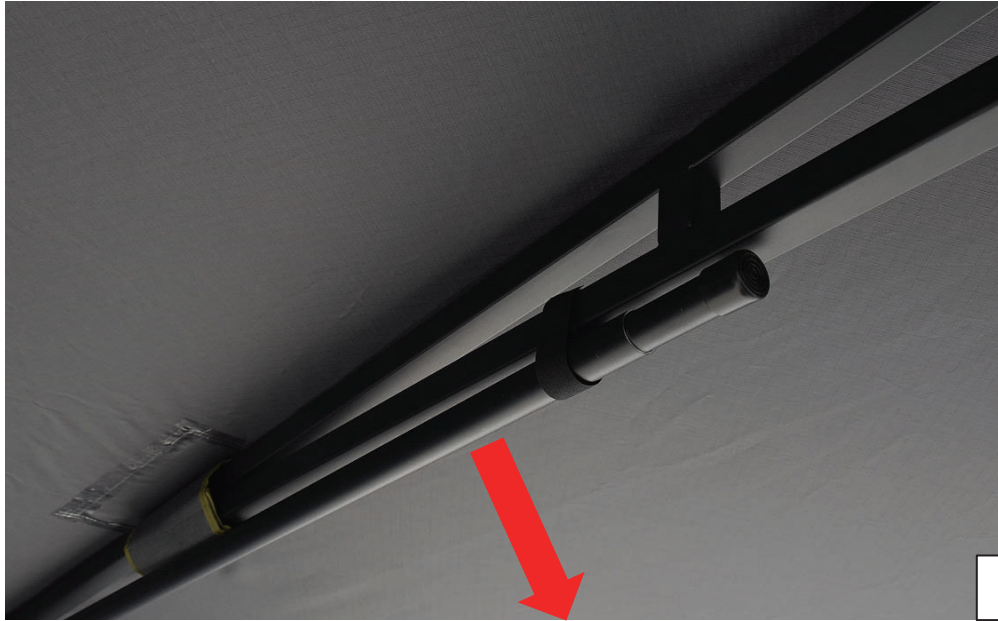


Fig. P

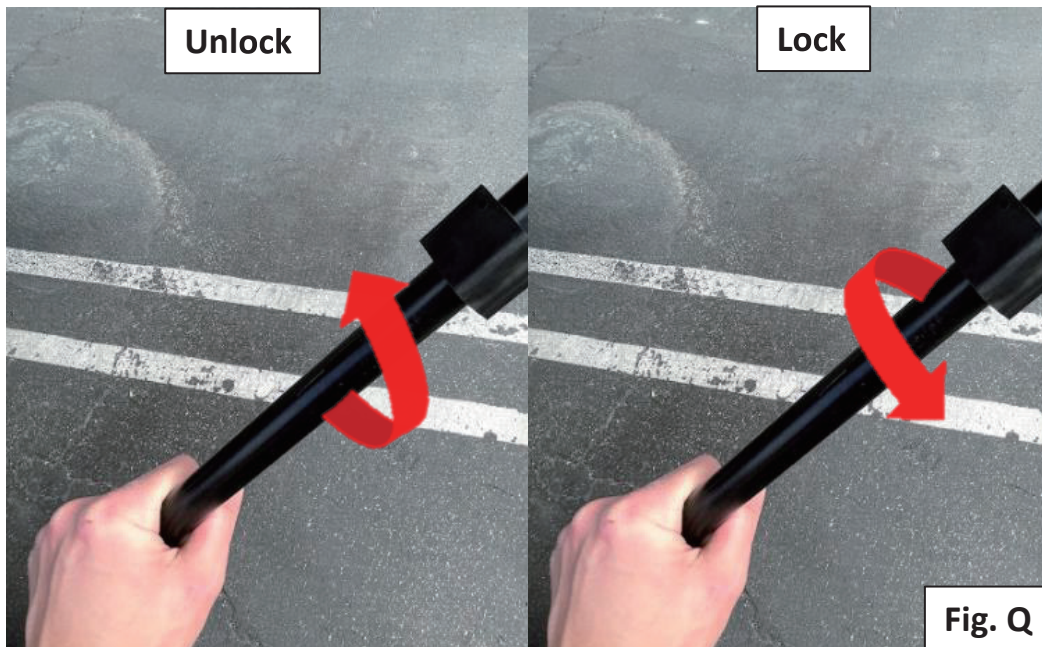


Fig. Q

For Technical Support/Warranty Information please call 1-800-776-0767
Smittybilt, 1017 W. 600 N. STE 4, Ogden, UT 84404



WWW.SMITTYBILT.COM

Installation Instructions
270°Awning-PASS SIDE
Part #: S/B2796

Step 8. Attach tie down ropes to each of the loops located above each one of the drop-down legs. Secure using **(1) stake** per tie down. The rope should be set around a 45° angle. In the middle between each drop down leg you will find a tie down point. These are supplements and are especially helpful for directing rain off your awning. Use these whenever rain is expected. If the supplement middle tie downs are used to direct rain, you will want to slightly loosen the tie down straps to relieve a little tension off the awning. **(Figure R, S, & T)**



Fig. R

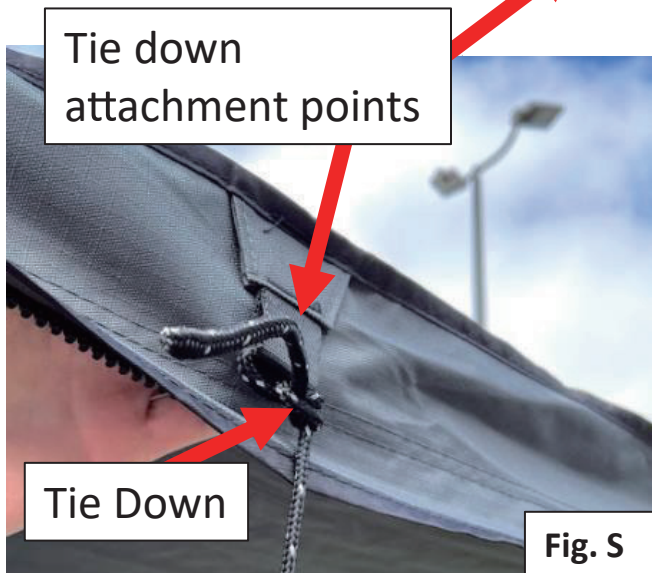


Fig. S

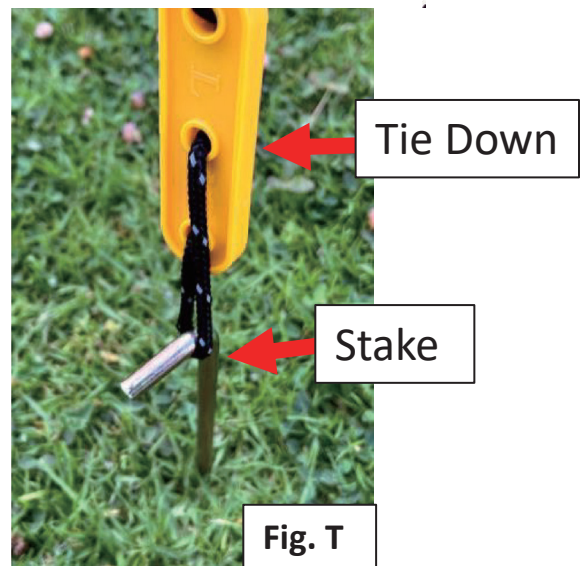


Fig. T

Setup is now complete

For Technical Support/Warranty Information please call 1-800-776-0767
Smittybilt, 1017 W. 600 N. STE 4, Ogden, UT 84404



WWW.SMITTYBILT.COM

**Installation Instructions
270°Awning-PASS SIDE
Part #: S/B2796**

Part 3: Closing the awning. (Teardown)

Step 1: Remove all tie downs, stake and anchor straps. These can now be put away.

Step 2: One at a time, loosen and collapse the legs of the awning, starting at the rear, and working your way towards the front. Reinsert the awning legs back into the frame. As shown in (Figure U).

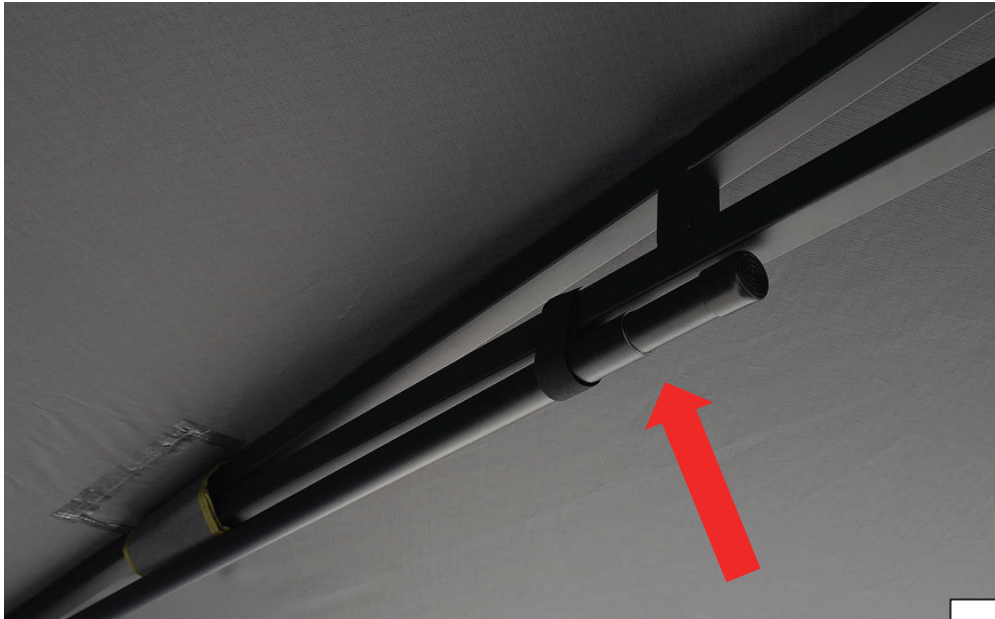


Fig. U

Step 3: Starting from the front section fold the arms back into the awning frame. The fold in the rear arm. The awning will look as shown in (Figure V).



Fig. V

For Technical Support/Warranty Information please call 1-800-776-0767
Smittybilt, 1017 W. 600 N. STE 4, Ogden, UT 84404



WWW.SMITTYBILT.COM

**Installation Instructions
270°Awning-PASS SIDE
Part #: S/B2796**

Step 4: Tightly roll the awning back up starting at the bottom until you reach the top. Secure the rolled-up awning using the Velcro straps shown in **(Figure W)**.



Fig. W

Step 5: Fold the cover back over the rolled-up awning and zip the cover closed.

Tear-down is now complete.

Periodically check that all hardware is tight. This should be done 200 miles after installation and every 500 miles after. This should also be done prior to a trip where use is expected.

For Technical Support/Warranty Information please call 1-800-776-0767
Smittybilt, 1017 W. 600 N. STE 4, Ogden, UT 84404



WWW.SMITTYBILT.COM

**Installation Instructions
270°Awning-PASS SIDE
Part #: S/B2796**

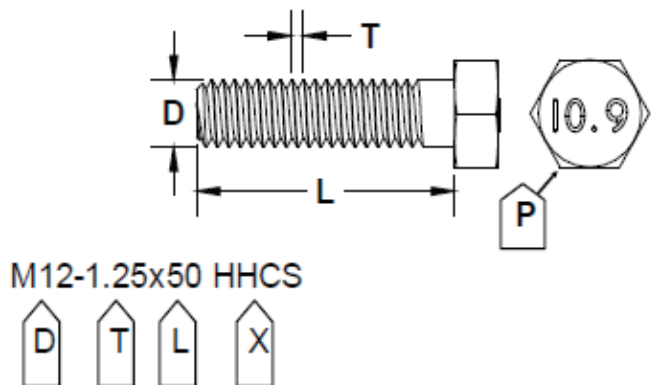
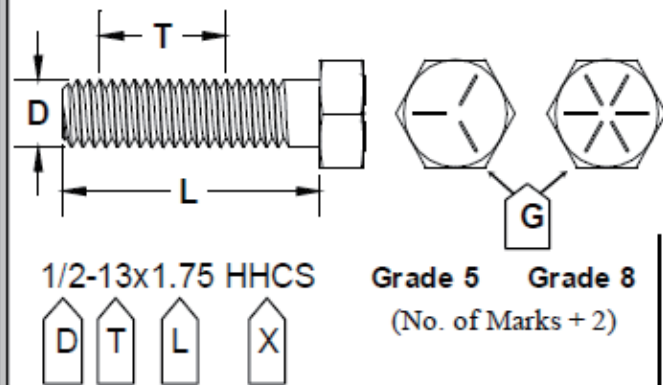
Bolt Torque and ID

Decimal System

Metric System

All Torques in Ft. Lbs.

Bolt Size	Grade 5	Grade 8	Bolt Size	Class 9.8	Class 10.9	Class 12.9
5/16	15	20	M6	5	9	12
3/8	30	45	M8	18	23	27
7/16	45	60	M10	32	45	50
1/2	65	90	M12	55	75	90
9/16	95	130	M14	85	120	145
5/8	135	175	M16	130	165	210
3/4	185	280	M18	170	240	290



G = Grade (Bolt Strength)
 D = Nominal Diameter (Inches)
 T = Thread Count (Threads per Inch)
 L = Length (Inches)
 X = Description (Hex Head Cap Screw)

P = Property Class (Bolt Strength)
 D = Nominal Diameter (Millimeters)
 T = Thread Pitch (Thread Width, mm)
 L = Length (Millimeters)
 X = Description (Hex Head Cap Screw)



**WARNING: Cancer and Reproductive Harm -
www.P65Warnings.ca.gov.**

*Jeep, Wrangler, Rubicon,
Renegade, CJ, Quada Trac and
the Jeep Grille Design are
Registered trademarks of FIAT
Chrysler Automotive (FCA)*

For Technical Support/Warranty Information please call 1-800-776-0767
 Smittybilt, 1017 W. 600 N. STE 4, Ogden, UT 84404



WWW.SMITTYBILT.COM

**Installation Instructions
270°Awning-PASS SIDE
Part #: S/B2796**

Care Instructions

1. Clean using only cold water and a soft brush - do not use soap or detergent, this will remove the waterproofing compounds.
2. Do not expose to petrol, oil or solvents.
3. New poly/cotton fabric will initially experience some weeping through the seams. This will reduce over time as the fabric cures.
4. Well worn products may be re-proofed using a good quality waterproofing solution. This is highly recommended. Generally, this is re-applied every 1-2 years depending on how much you use or clean the awning and what environments your awning has been used in. Some waterproofing agents may also contain UV inhibitors. 303 protectant fabric guard, Star Brite, Rain guard, Nikwax and Kiwi all offer polycotton safe waterproofing solutions.
5. It is recommended to season your awning before your first trip. You can season the awning fabric by setting up awning on a level surface before actual use. Completely set-up the awning. With a hose, wet down the awning lightly. Then focus on all the areas that have been stitched and waterlog the fabric the best you can. Let awning dry completely on its own, do not use heat or compressed air to dry awning, let it dry naturally, avoid direct sunlight, this may take a day or so. Repeat this process two or three more times if necessary. This process allows the canvas and threads to shrink and expand as much as they can effectively sealing the seams. Do not be alarmed if the awning leaks for the first or second time you season the canvas as this is normal as the thread and canvas contract and expand together. Liquid seam sealer can be applied after the 3rd or 4th seasoning.
6. Zippers can be lubed with a silicon spray or bee's wax; this keeps them lubed and helps with water resistance. Clean zippers with a soft brush.
7. If the fabric needs cleaning, use a mild detergent mixture (1 cup Lysol all-purpose cleaner to 1 gallon of warm water) use with a soft brush to clean fabric as needed. Rinse off the awning with a rinse solution of (1 cup lemon juice, 1 cup sea salt to 1 gallon of warm water). Final rinse with cool water. Allow to dry completely before storage. Re-proof awning if needed.
8. Stainless steel hardware will stain less than zinc coated hardware, but it still needs routine maintenance. After you check torque on bolts, wipe down with a cloth and Break-Free CLP.
9. **Periodically check that all hardware is tight. This should be done after the first 200 miles after installation and every 500 miles after. This should also be done prior to a trip where use is expected.**

For Technical Support/Warranty Information please call 1-800-776-0767
Smittybilt, 1017 W. 600 N. STE 4, Ogden, UT 84404



WWW.SMITTYBILT.COM

**Installation Instructions
270°Awning-PASS SIDE
Part #: S/B2796**

Limited Warranties

Two-year limited warranty

Smittybilt's products are covered under various limited warranties only. Note that the duration of the limited warranty differs according to the material and finish of the product purchased. Gen 2 and 270° overland awnings carry a 2-year warranty from date of purchase. Subject to the duration and conditions of the limited warranty stated below, Smittybilt warrants to the original retail purchaser that its products are free from defects in material and workmanship. Smittybilt shall not be responsible for the natural wear and breakdown of materials that occurs with extended use, such as UV damage or worn zippers, abuse, misuse, storm damage, or improper care. All other warranties and representations express or implied, are hereby disclaimed, including fitness for merchantability and buyer's intended use or purpose. All parts are sold "AS IS" except for the limited warranties granted herein. Buyer assumes all risks as to the selection, suitability and performance of all goods and products selected. This limited warranty does not cover damage or impairment in any part due to misuse, improper installation, accident or contact with on-road or off-road hazards, product modification, improper or inadequate cleaning and/or maintenance. Smittybilt is not responsible for items damaged during shipping. This warranty is not transferable from the original buyer. For the original Buyer to be eligible for the limited warranty coverage, the Buyer must provide proof of purchase.

Customer's remedy hereunder shall be limited only to repair or replacement (at Smittybilt's option) of any defective part(s) returned to Smittybilt at customer's expense. The determination of whether a returned part is defective or subject to coverage under the limited warranties stated herein shall be made at Smittybilt's and/or its representative's sole discretion. Any returns must be made freight pre-paid by consumer.

To assure product quality, Smittybilt reserves the right to change product design, material, specification and finishes without prior notice to customers. This limited warranty gives you specific legal rights and you may also have other rights, which may vary from state to state. Some states do not allow limitations on how long an implied warranty lasts, so the above limitations may not apply as to you. Also, some states do not allow the exclusion or limitation of incidental or consequential damages, so the above limitations or exclusions may not apply to you. Smittybilt reserves the right to discontinue product lines and substitute products or provide other remedies than those listed in this limited warranty for those discontinued products.

Warning

Rollover and other types of vehicle accidents may result in serious injury or death to you, your passengers and others sharing the road. Smittybilt accessories are decorative and are not intended to reduce or avoid injury or damage in the event of an accident. The weight and location of Smittybilt accessories may affect your vehicles' handling, stability and performance, creating an increased risk of accident or rollover. Before installing any accessory, check state laws and assure that the accessory will not obscure any lights or interfere with proper operation on your vehicle's safety equipment. Consult your owner's manual and the Smittybilt instructions, or additional safety information. Smittybilt products, nor the warnings contained herein, are not a substitute for your safe driving. Don't drink and drive, always use seat belts and don't drive faster than conditions permit.

For Technical Support/Warranty Information please call 1-800-776-0767
Smittybilt, 1017 W. 600 N. STE 4, Ogden, UT 84404