

Installation Instructions



Low Profile Hidden Winch Bumper 2013-2024 Facelift Toyota 4Runner® S/B612951



For Technical Support / Warranty Information please call 1-800-776-0767
Smittybilt, 1017 W 600 N, Suite 4, Ogden, UT 84404

Introduction

Thank you for choosing Smittybilt accessories for your Toyota 4Runner®. If you would like to view our full range of available accessories, please visit us at www.smittybilt.com



Winches



Defender Platform Roof Rack Kit



Waypoint® 55L Dual Zone Fridge

Toyota® and 4Runner® are registered trademarks of Toyota Motor Corporation®

Important Notes Before Starting

! IMPORTANT NOTE

Carefully read through this entire instruction manual thoroughly before attempting to install this part. Photos may vary from your vehicle. Installation will remain the same.

! IMPORTANT NOTE

Cutting the OE bumper is required to install this bumper. Always use proper safety glasses and PPE. Failure to do so may result in injury.

! WARNING

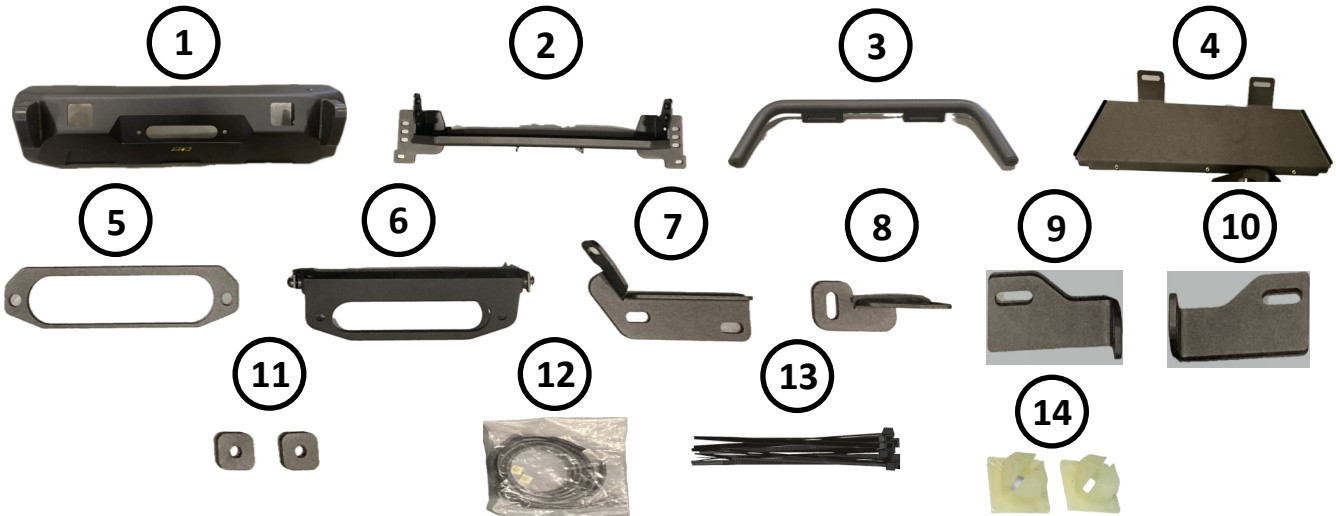
Serious injury can occur when working on vehicles alone.

When possible, work with another person to reduce risk of injury from strain or other dangers that can occur when working alone.



For Technical Support / Warranty Information please call 1-800-776-0767
Smittybilt, 1017 W 600 N, Suite 4, Ogden, UT 84404

Box Contents & Technical Information



ID	Part Description	QTY
1	4Runner® Low Profile Bumper	1
2	Winch Plate	1
3	Bull Bar	1
4	Skid Plate	1
5	Fairlead Spacer Plate	1
6	License Plate Mounting Kit	1
7	Driver Brace Bracket	1
8	Passenger Brace Bracket	1
9	Passenger Mounting Bracket	1
10	Driver Mounting Bracket	1
11	LED Light Spacer	2
12	Rubber Strap	1
13	Cable Tie	10
14	C30 Plastic Retainer	2
	4mm Allen Key	1
	6mm Allen Key	1
	M12-1.25 x30mm Hex Head Bolt	2

ID	Part Description	QTY
	M12-1.75 x40mm Hex Head Bolt	6
	M12 Lock Washer	8
	M12 Extra Large Flat Washer	8
	M10-1.5 x45mm Hex Head Bolt	2
	M10-1.5 x30mm Button Head Cap Screw	2
	M10-1.5 x25mm Hex Head Bolt	2
	M10 Lock Washer	4
	M10 Flat Washer	4
	M10 Large Flat Washer	2
	M10 Extra Large Flat Washer	12
	M10-1.5 Nut	2
	M10-1.5 Nyloc Nut	2
	M8-1.25 x40mm Hex Flange Bolt	2
	M8-1.25 x25mm Hex Head Bolt	3
	M8 Extra Large Flat Washer	8
	M8-1.25 Nyloc Nut	3
	M6-1.0x 15mm Button Head Cap Screw	3



For Technical Support / Warranty Information please call 1-800-776-0767
 Smittybilt, 1017 W 600 N, Suite 4, Ogden, UT 84404

*Hardware not actual size.

Installation Instructions: 4Runner® Low Profile Front Bumper



Step 1:

Park your 4Runner® on a flat surface and chock all four wheels.

Disconnect the negative battery terminal.

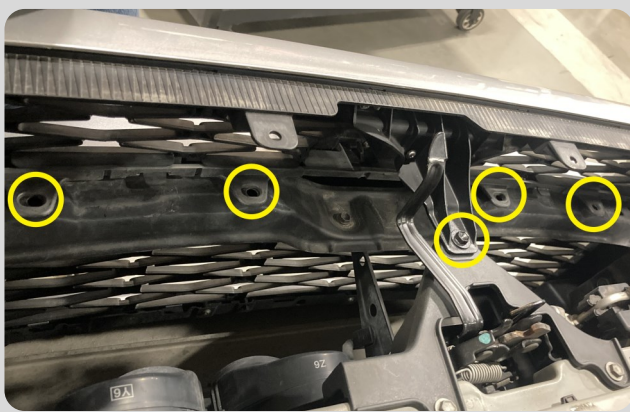
Note: If fog lights optioned on your 4Runner®, unplug both fog light connections from either front lower corners to ease bumper removal.



Step 2:

Remove the (13) factory retaining clips from the upper panel.

Retain All Factory Hardware.



Step 3:

Remove the (4) factory retaining clips behind the grill.

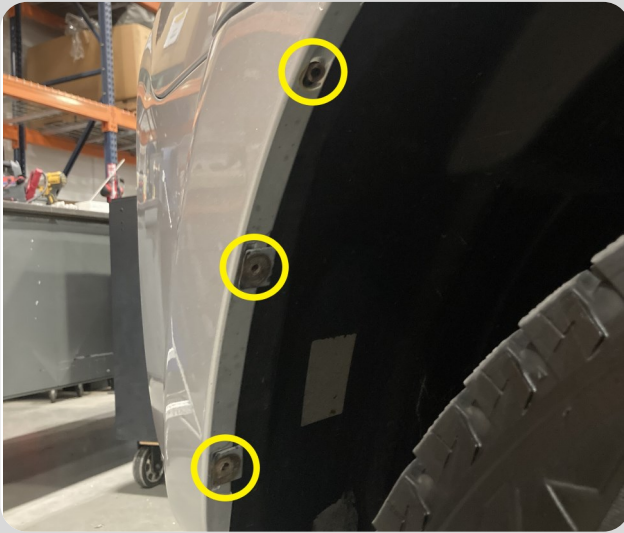
Remove the (1) factory 10mm retaining screw for grill.

Retain All Factory Hardware.



For Technical Support / Warranty Information please call 1-800-776-0767
Smittybilt, 1017 W 600 N, Suite 4, Ogden, UT 84404

Installation Instructions: 4Runner® Low Profile Front Bumper



Step 4:

Remove the **(6) factory screws** on the **driver and passenger side** of the bumper nearest to the wheel well.

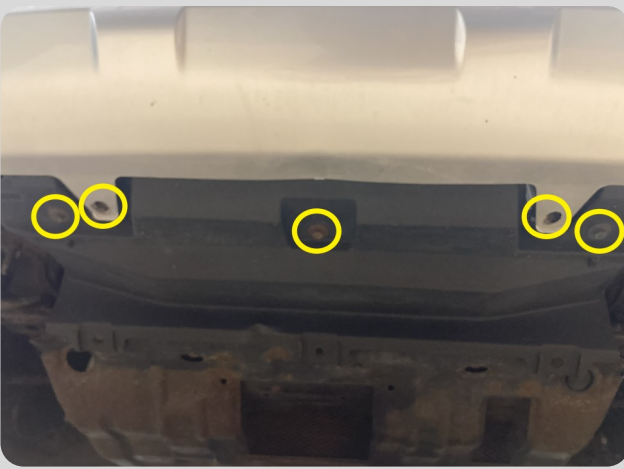
Retain All Factory Hardware.



Step 5:

Remove the **(3) factory screws** and **(2) factory plastic retainers** holding the fender liners to the bumper on both **driver and passenger sides**.

Retain Factory Plastic Retainers for Later Use.



Step 6:

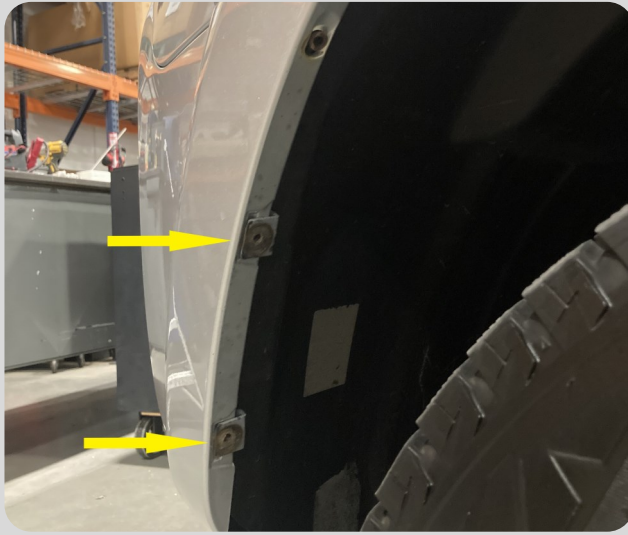
Remove the **(2) factory screws** on the bumper and the **(3) factory screws** holding the lower air diverter panel.

Discard diverter and hardware.



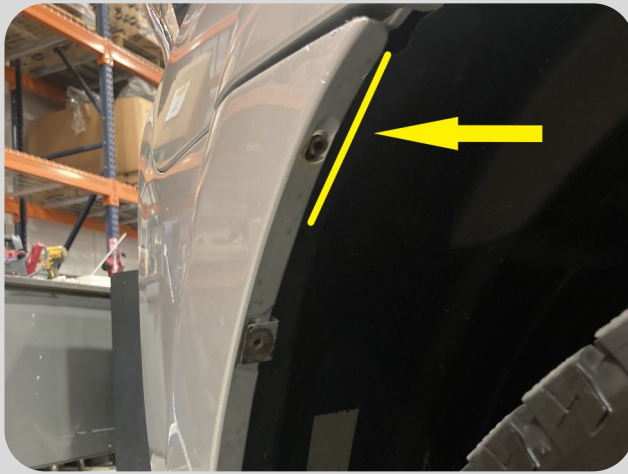
For Technical Support / Warranty Information please call 1-800-776-0767
Smittybilt, 1017 W 600 N, Suite 4, Ogden, UT 84404

Installation Instructions: 4Runner® Low Profile Front Bumper



Step 7:

Push toward the inside of the vehicle to detach the **(4) factory fender liner retainers** from the bumper on the **driver and passenger side** of the vehicle.



Step 8:

Pull out on the upper section of the bumper shown in the picture for the driver and passenger side of the vehicle to release the bumper.

The bumper will now be loose once both sides are done.

Note: Take your time to avoid damaging vehicle.



Step 9:

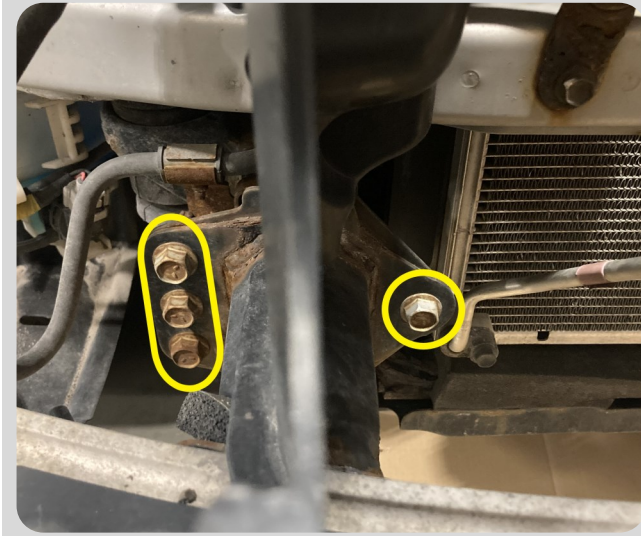
Carefully remove the bumper.

The OE crash bar is now visible.



For Technical Support / Warranty Information please call 1-800-776-0767
Smittybilt, 1017 W 600 N, Suite 4, Ogden, UT 84404

Installation Instructions: 4Runner® Low Profile Front Bumper

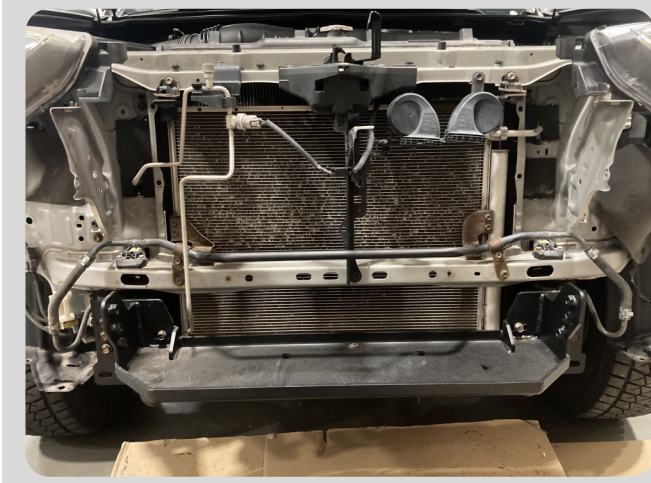


Step 10:

You will now be able to access the OE crash bar.

Remove the **(4) factory bolts** on the **passenger side** and the **(4) factory bolts** on the **driver side** that attach the crash bar to the frame horns.

Retain All Factory Hardware.



Step 11:

Install the **Winch Cradle** to the frame horns using the **(8) factory bolts** and **(8) supplied M8 Extra Large Flat Washers**.

Note: If installing a winch do so at this time.

Do Not Tighten Bolts Until the End.



Step 12:

Using a cutting tool, trim the driver air diverter panel to fit the **4Runner® Low Profile Bumper**.

Note: It may be necessary to do some fine-tuning when installing the Low Profile Bumper. Keep the cutting tools handy just in case.



For Technical Support / Warranty Information please call 1-800-776-0767
Smittybilt, 1017 W 600 N, Suite 4, Ogden, UT 84404

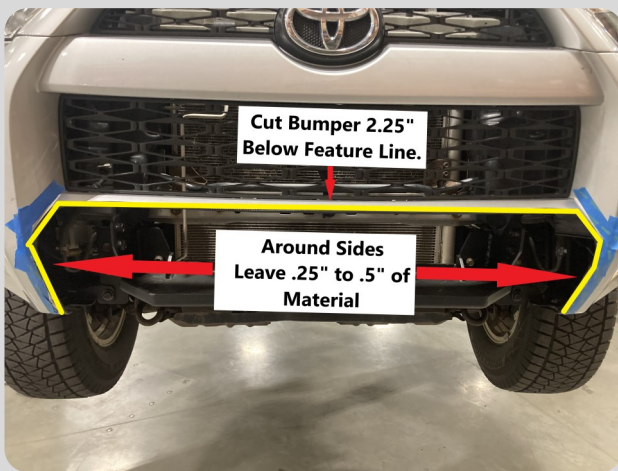
Installation Instructions: 4Runner® Low Profile Front Bumper



Step 13:

Trim the passenger air diverter panel to fit the **4Runner® Low Profile Bumper**.

Place the front bumper back on the vehicle to prepare for cutting.



Step 14:

Prepare the area for cutting and trimming. Be sure to wear PPE when cutting or trimming. The section shown in the photo on the left will be cut out of the factory bumper.

*When fitment is complete finish trimmed edge of factory bumper with **Rubber Strap**.



Step 15:

If installing a winch, install the fairlead to the **Bumper** at this time.

If installing light pods, do so at this time as well.

*We Recommend using Morimoto 4Banger Light Pods.



For Technical Support / Warranty Information please call 1-800-776-0767
Smittybilt, 1017 W 600 N, Suite 4, Ogden, UT 84404

Installation Instructions: 4Runner® Low Profile Front Bumper



Step 16:

Use the supplied (2) M12-1.25x30mm Bolts, (2) M12 Lock Washers, and (2) M12 Extra Large Flat Washers to install the Driver and Passenger Winch Cradle Mounting Brackets.

Do Not Tighten Bolts Until the End.



Step 17:

Install the Driver Brace Bracket using the supplied (1) M10-1.5x45mm Bolt, (2) M10 Extra Large Flat Washers, (1) M10 Lock Washer, and (1) M10-1.5 Nut.

Do Not Tighten Bolts Until the End.



Step 18:

Install the Passenger Brace Bracket using the supplied (1) M10-1.5x45mm Bolt, (2) M10 Extra Large Flat Washers, (1) M10 Lock Washer, and (1) M10-1.5 Nut.

Do Not Tighten Bolts Until the End.



For Technical Support / Warranty Information please call 1-800-776-0767
Smittybilt, 1017 W 600 N, Suite 4, Ogden, UT 84404

Installation Instructions: 4Runner® Low Profile Front Bumper

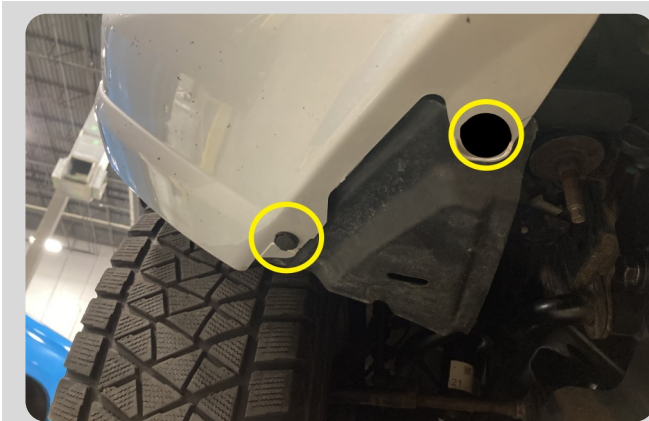


Step 19:

Install the **Bull Bar** onto the **4Runner® Low Profile Bumper** using the supplied (2) **M10-1.5 x25mm Bolts**, (2) **M10 Lock Washers**, and (2) **M10 Extra Large Flat Washers**.

Torque Hardware Using the Chart on Page 13 of This Guide.

Note: If installing a light bar onto the Bull Bar use the (2) M10-1.5x30mm Buttonhead Bolts, (2) M10 Flat Washers, and (2) Nyloc Nuts.



Step 20:

Reattach Bumper and fender liner to the **Passenger Brace Bracket** using the supplied (1) **M8-1.25 x25mm Bolt**, (2) **M8 Extra Large Flat Washers**, (1) **M8-1.25 Nyloc Nut**, and the **factory retaining clip**.

Torque Hardware Using the Chart on Page 13 of This Guide.



Step 21:

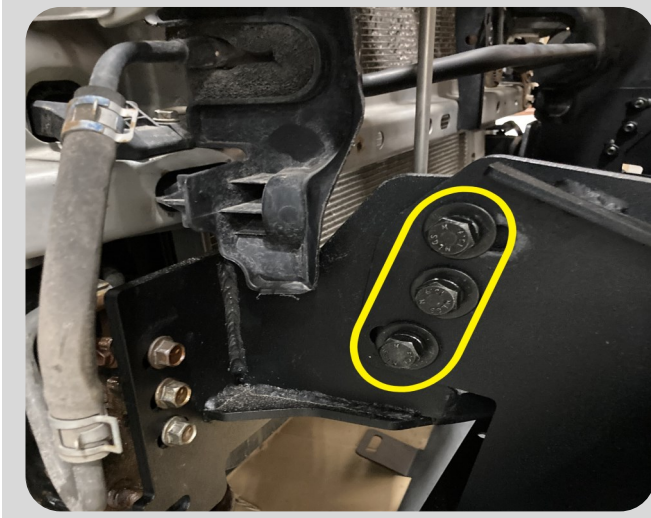
Reattach Bumper and fender liner to the **Driver Brace Bracket** using the supplied (2) **M8-1.25 x25mm Bolts**, (4) **M8 Extra Large Flat Washers**, (2) **M8-1.25 Nyloc Nuts**, and the **factory retaining clip**.

Torque Hardware Using the Chart on Page 13 of This Guide.



For Technical Support / Warranty Information please call 1-800-776-0767
Smittybilt, 1017 W 600 N, Suite 4, Ogden, UT 84404

Installation Instructions: 4Runner® Low Profile Front Bumper



Step 22:

Install the **4Runner® Low Profile Bumper** using the supplied **(6) M12-1.75 x40mm Bolts**, **(6) M12 Extra Large Flat Washers**, and **(6) M12 Lock Washers** on the **passenger and driver side** of the **Winch Cradle**.

Do Not Tighten Bolts Until the End.

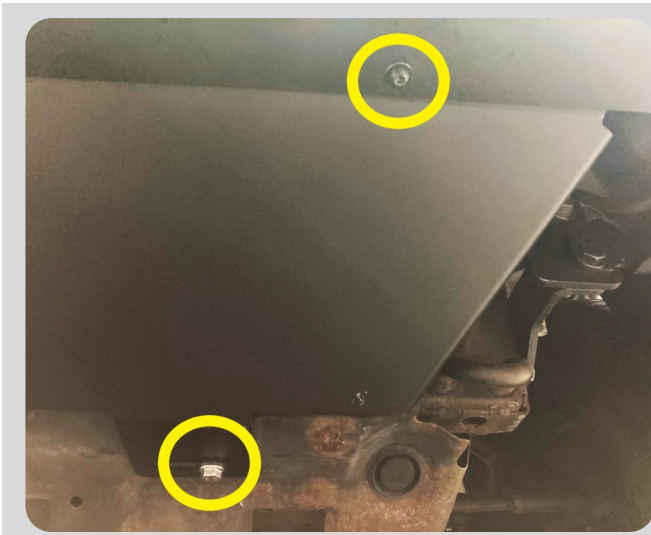
*Picture is for fitment demonstration purposes only. OE Bumper Shell will be present.



Step 23:

Make final adjustments to the bumper. A jack can be used with a block of wood to hold the bumper in the ideal position.

Torque all hardware using the chart on Page 13 of this guide.



Step 24:

Remove the **(2) factory skid plate front bolts**.

Secure the supplied **Skid Plate** using the supplied **(3) M6-1.0 x15mm Button Head Screws** to the **Low Profile Bumper**.

Attach the supplied **Skid Plate** to the **factory skid plate** with the supplied **(2) M8-1.25 x40mm Bolts** and **(2) M8 Extra Large Flat Washers**.



For Technical Support / Warranty Information please call 1-800-776-0767
Smittybilt, 1017 W 600 N, Suite 4, Ogden, UT 84404

Installation Instructions: 4Runner® Low Profile Front Bumper



Step 25:

Installation of the 4Runner® Low Profile Bumper is now complete.

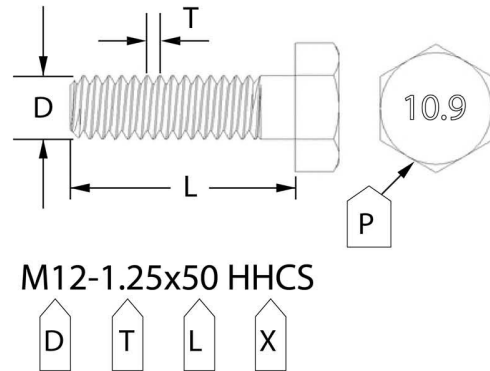
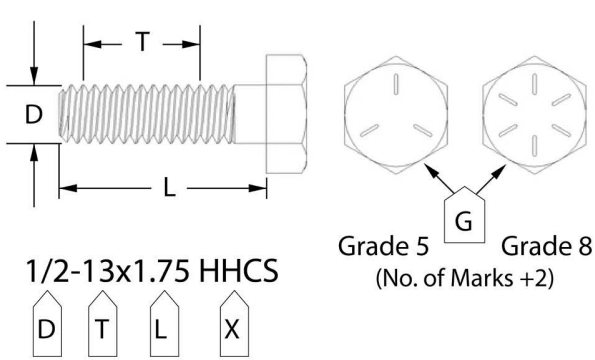


For Technical Support / Warranty Information please call 1-800-776-0767
Smittybilt, 1017 W 600 N, Suite 4, Ogden, UT 84404

Bolt Torque Specifications

Use this only as a guide for hardware without a called out torque specification in the instruction manual.

Bolt Torque and ID						
Decimal System			Metric System			
<i>All Torques in Ft. Lbs. Maximums</i>						
Bolt Size	Grade 5	Grade 8	Bolt Size	Class 9.8	Class 10.9	Class 12.9
5/16	15	20	M6	5	9	12
3/8	30	45	M8	18	23	27
7/16	45	60	M10	32	45	50
1/2	65	90	M12	55	75	90
9/16	95	130	M14	85	120	145
5/8	135	175	M16	130	165	210
3/4	185	280	M18	170	240	290



G= Grade (Bolt Strength)
 D= Nominal Diameter (Inches)
 T= Thread Count (Threads per Inch)
 L= Length (Inches)
 X= Description (Hex Head Cap Screw)

P= Property Class (Bolt Strength)
 D= Nominal Diameter (Millimeters)
 T= Thread Pitch (Thread Width, mm)
 L= Length (Millimeters)
 X= Description (Hex Head Cap Screw)



For Technical Support / Warranty Information please call 1-800-776-0767
 Smittybilt, 1017 W 600 N, Suite 4, Ogden, UT 84404

Notes and Disclaimers

Product cleaning and maintenance instructions

Stainless Steel Finish – Aluminum polish may be used to polish small scratches and scuffs on the finish. Mild soap, window or glass cleaner may be used to clean the finish. Dual state powder coat finish – Mild soap, window or glass cleaner may be used to clean the finish. In order to protect the finish, you may wax your product on a regular basis with pure carnauba automotive wax. Do not use any types of soap, polish or wax that contains abrasive that could damage the finish. Textured coated finishes should be cleaned with a mild soap on a damp sponge. Do not apply polish or wax that requires to be removed by means of buffing. This type of wax is commonly used at car wash facilities. Chrome Finish – Mild soap, window or glass cleaner may be used to clean the finish. In order to protect the finish, you should wax your product on a regular basis with pure carnauba automotive wax. Do not use any types of soap, polish or wax that contains abrasive that could damage the finish.

SMITTYBILT ADVANTAGE WARRANTY

LIMITED-LIFETIME WARRANTY FOR STRUCTURAL COMPONENTS

5-YEAR FINISH WARRANTY

Smittybilt Automotive Products, LLC (SAP) warrants to the original purchaser that (a) the physical components (e.g., metal components, welds, etc.) of any SAP **4Runner® Low Profile Front Bumper** will be free of defects in material and workmanship for the lifetime of the product from the date of purchase of the bumper, and (b) the finish will be free of defects in material and workmanship for a period of 5-years from the original date of purchase. This warranty applies only to the original purchaser of the bumper and is non-transferable. To obtain any warranty service, you must provide SAP with a proof of purchase and date of purchase that is acceptable to SAP, such as a copy of your purchase receipt.

This warranty does not cover labor or part replacement of the bumper. SAP will, at its sole discretion, provide replacement part (s) for a defective bumper or component, provided this is done within the warranty period. To request assistance under warranty, one must call or email using the phone number or email at the bottom of this page. This warranty does not apply (1) wearables components; or (2) if the bumper has been damaged, including, but not limited to: abuse, misuse, collision, modification, misapplication, improper installation, or improper service. This warranty is void if any SAP serial number has been removed or defaced; or if the bumper is used for any commercial, industrial, or rental applications. This warranty only applies to bumpers bought, sold, and used within the United States or Canada unless otherwise specifically agreed in writing by SAP.

THE WARRANTY SET FORTH ABOVE IS THE ONLY WARRANTY. THERE ARE NO OTHER WARRANTIES, EXPRESSED OR IMPLIED, INCLUDING BUT NOT LIMITED TO IMPLIED WARRANTIES OF MERCHANTABILITY OR FITNESS FOR A PARTICULAR PURPOSE. ANY IMPLIED WARRANTY WHICH BY LAW MAY NOT BE EXCLUDED IS LIMITED TO A DURATION OF ONE (1) YEAR FROM THE DATE OF ORIGINAL RETAIL PURCHASE OF THE PRODUCT. No SAP dealer, agent, or employee is authorized to make any modification, extension or addition to this warranty. SAP SHALL NOT BE LIABLE FOR SPECIAL, INDIRECT, INCIDENTAL OR CONSEQUENTIAL DAMAGES (INCLUDING, BUT NOT LIMITED TO, LOST PROFITS, DOWN TIME OR LOSS OF USE) UNDER ANY LEGAL THEORY, EVEN IF SAP WAS ADVISED OF THE POSSIBILITY OF SUCH DAMAGES. Some states do not allow the exclusion of implied warranties or the exclusion or limitation of liability for incidental or consequential damages, or limitations on how long an implied warranty lasts, so the above limitation or exclusion may not apply to you. This Warranty gives you specific legal rights. You may also have other rights that vary from state to state. SAP reserves the right to change product design without notice. In situations in which SAP has changed a product design, SAP shall have no obligation to upgrade or otherwise modify previously manufactured products. For warranty inquiries contact SAP at:

Smittybilt Automotive Products, LLC

Customer Service Department

Call 1-800-776-0767 or Email info@smittybilt.com



WARNING: Cancer and Reproductive Harm
www.P65Warnings.ca.gov



For Technical Support / Warranty Information please call 1-800-776-0767
Smittybilt, 1017 W 600 N, Suite 4, Ogden, UT 84404