

Installation Instructions



Ram 2500 Adventure Series Rear Bumper

2019+ Ram 2500/3500

Part #: S/B613903



Modifications to the OE tow hitch are REQUIRED.



For Technical Support / Warranty Information please call **800-776-0767** or email info@smittybilt.com
1017 W 600 N, STE 4, Ogden, UT 84404

Introduction

Thank you for choosing Smittybilt accessories for your Ram 2500/3500. If you would like to view our full range of available accessories, please visit us at www.smittybilt.com



Ram® is a registered trademark of FCA US LLC.

Important Notes Before Starting



IMPORTANT NOTE

Carefully read through this entire instruction manual thoroughly before attempting to install this part.



WARNING

Serious injury can occur when working on vehicles alone.

When possible, work with another person to reduce risk of injury from strain or other dangers that can occur when working alone.

The following tools will be required to complete the installation of this part:

TOOLS REQUIRED

10mm Wrench	13mm Wrench	13mm Socket Wrench
15mm Socket Wrench	18mm Wrench	19mm Wrench
4mm Allen	Flat Head Screwdriver	Trim Removal Tool
Grinder with Cutting Wheel		



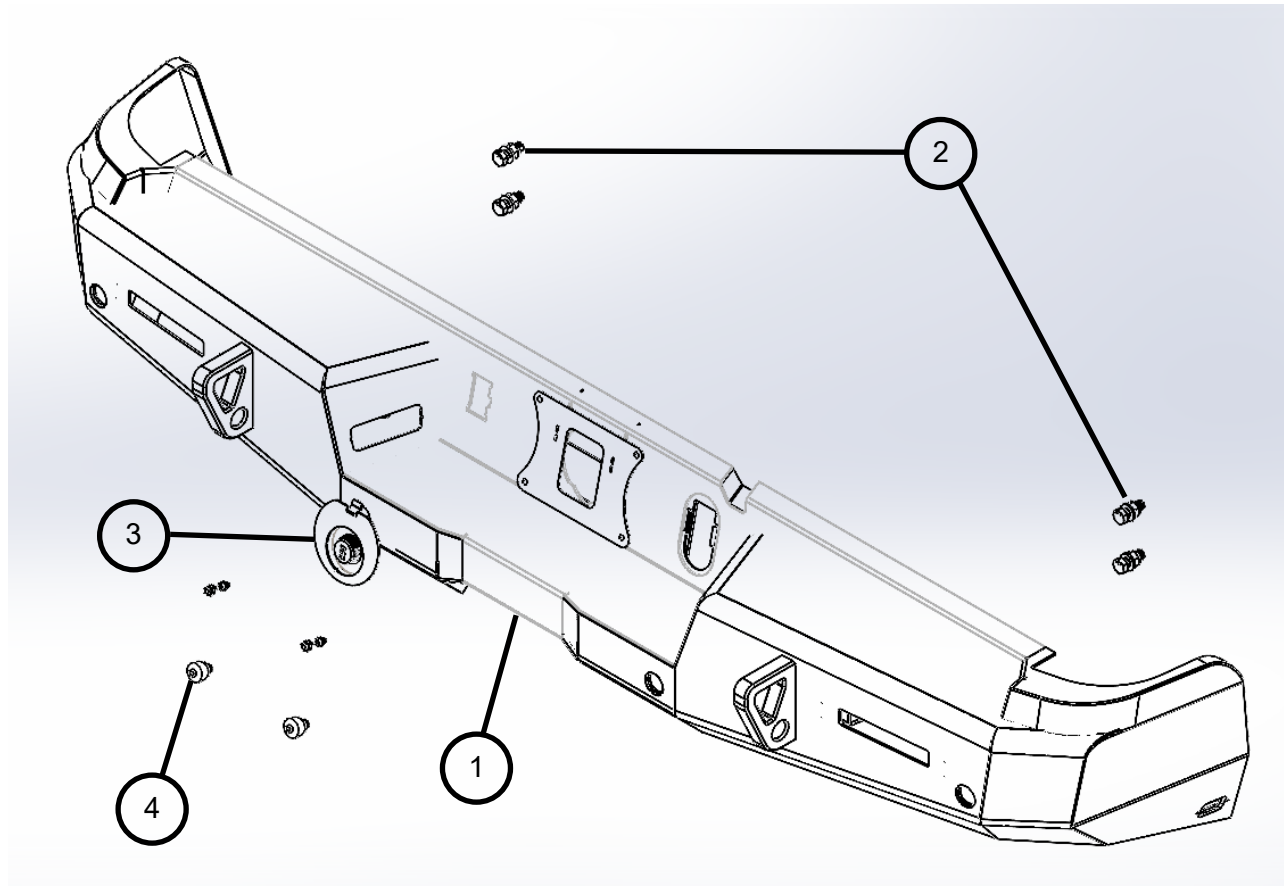
For Technical Support / Warranty Information please call **800-776-0767** or email info@smittybilt.com
1017 W 600 N, STE 4, Ogden, UT 84404

Box Contents & Technical Information

Box Contents

! IMPORTANT NOTE

Modification to the factory tow hitch is **required**.



Rear Bumper Assembly		
BUBBLE	DESCRIPTION	QTY
1	2019+ RAM 2500 Rear Bumper	1
2	Bumper Mounting Hardware	1
3	Locking Cubby Cover	1
4	License Plate Hardware Kit	1



For Technical Support / Warranty Information please call **800-776-0767** or email info@smittybilt.com
1017 W 600 N, STE 4, Ogden, UT 84404

Box Contents & Technical Information

Box Contents

90-60862 LICENSE PLATE HARDWARE	
DESCRIPTION	QTY
RUBBER BUMPER 1-1/32" OD 5/8" HEIGHT	2
M6X1 NYLOCK GR10.9 CZ	4
M6 FLAT WSHR CZ	8
M6X1X12 BHCS SS	2
M6X1X14 BHCS SS	2
M6X1X22 BHCS SS	2

90-60880 BUMPER MOUNTING HARDWARE	
DESCRIPTION	QTY
M12 FLAT WSHR DIN 125-1A CZ	8
M12X1.75 NYLOCK GR10.9 CZ	4
M12X1.75X35 HHCS GR10.9 CZ	4

PARKING SENSOR HARDWARE	
DESCRIPTION	QTY
ROUND PLUG FOR BEZELS	4
BEZEL CAP	4
FOAM BEZEL INSERT	4
FOAM BEZEL CAP INSERT	4
ST4x15 PHILLIPS SCREWS	8

90-60844 HDW PACK, CABLE TIES, 6IN	
DESCRIPTION	QTY
CABLE TIE, STANDARD, 6" LONG	10



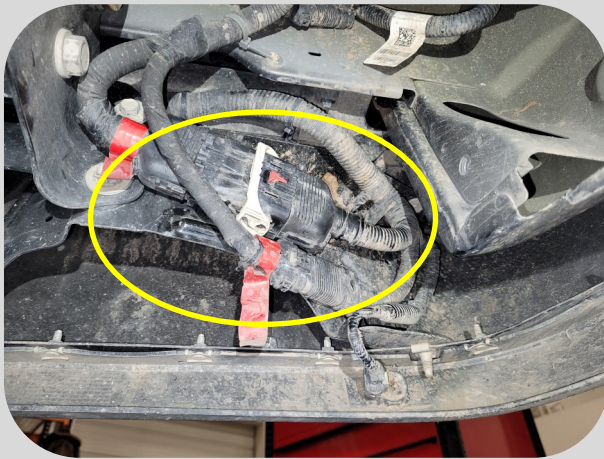
For Technical Support / Warranty Information please call **800-776-0767** or email info@smittybilt.com
 1017 W 600 N, STE 4, Ogden, UT 84404

Installation Instructions: Bumper Removal

Step 1: Set-Up

Open the box containing your Smittybilt Adventure Series Rear Bumper and check all parts against the Bill of Materials outlined on the first few pages of these instructions. If anything is missing, contact Smittybilt factory technical support.

Park vehicle on a flat, level surface. Apply the parking brake and disconnect your battery. Place masking tape around the rear fenders and tailgate areas that can be scratched by removal and installation of the rear bumper. Remove your license plate from the OE rear bumper.



Step 2: Disconnect wiring harness

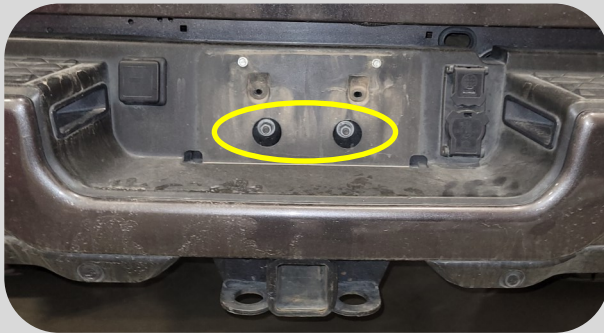
Locate and disconnect the two connectors for the rear bumper wiring harness in the driver side inside corner of the rear bumper.



Step 3: Bumper Removal

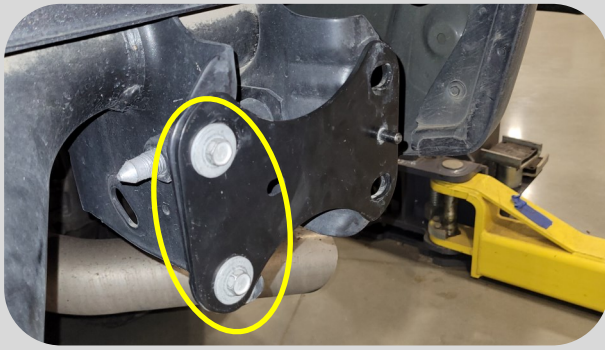
Using a 15mm socket and socket wrench, remove the six (6) bolts that mount the OE bumper to the vehicle: two (2) inside both corners of the bumper and two (2) behind where the license plate was mounted.

Slowly pull the bumper off the vehicle. As you do so, disconnect the wire for the trailer camera from the bumper. Pull the bumper off of the vehicle.



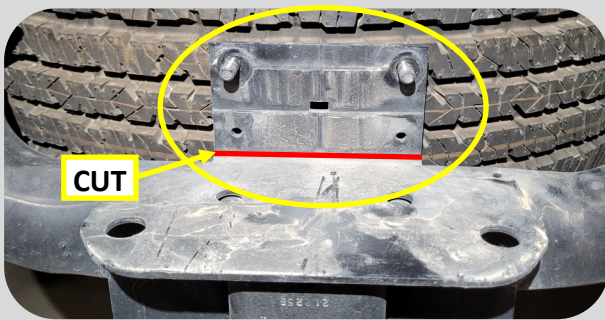
For Technical Support / Warranty Information please call **800-776-0767** or email info@smittybilt.com
1017 W 600 N, STE 4, Ogden, UT 84404

Installation Instructions: Bumper Removal



Step 4: Backing plate removal

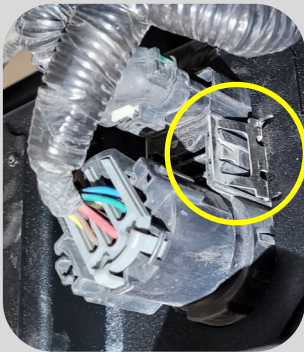
Using a 13mm socket and socket wrench, remove the two (2) bolts holding each backing plate to the frame horns. **Save these four (4) bolts for later.**



Step 5: Cut off center mounting tab

Lower the spare tire out of the way so it doesn't get cut.

Using a grinder with a cutting wheel, cut off the center tab used for mounting the OE bumper. The studs on this tab get in the way of mounting the SB bumper.



Step 6: Wiring & OE Components Removal

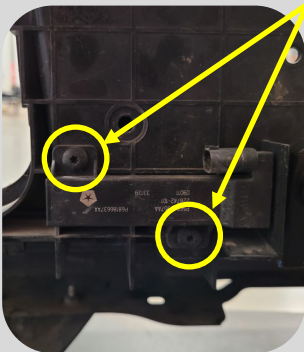
Disconnect the backup sensors, license plate lights, TPMS antenna, and all trailer connections from the wiring harness. Using a trim removal tool, remove the wiring harness by pulling up all of the plastic retainers holding it to the bumper.

- Remove the trailer connection plugs by pushing in both of the silver tabs and pushing the plugs out.

- Remove the TPMS antenna with a T20 torx bit. Save these TPMS trim fasteners for later.

- Using a 10mm wrench, remove the license plate lights by removing the bolt on the back of each light and pushing the light out. **Note their position and orientation so they can go on the new SB bumper the same way.**

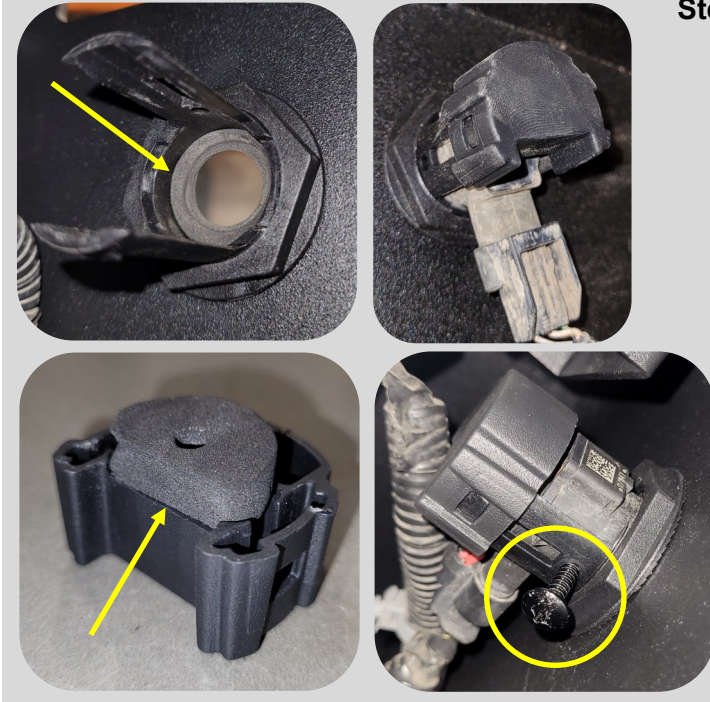
- Remove each parking sensor from its bezel by spreading the bezel tabs and pushing the sensor out. **Note the location of each sensor so they can go on the new bumper in the same order and orientation.**



For Technical Support / Warranty Information please call **800-776-0767** or email **info@smittybilt.com**
1017 W 600 N, STE 4, Ogden, UT 84404

Installation Instructions: Bumper Installation

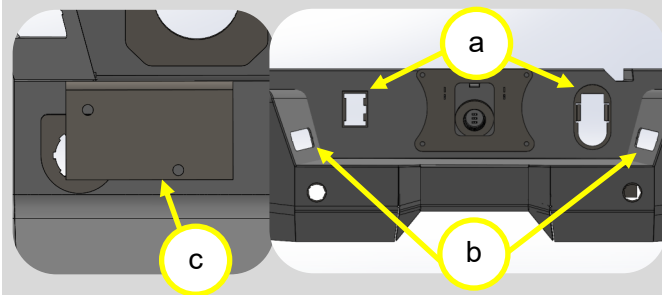
Step 7: Parking Sensor Installation



To install the parking sensors on the SB bumper, place the foam inserts (with the backing removed) in the bezels and on the bezel caps. Place sensors in the bezels in their original locations and orientations, then place the bezel caps over the back of each sensor.

The provided Phillips screws (x8) can be used on the top and bottom of the bezels to better secure and straighten the sensors.

Step 8: Wiring & OE Component Installation



Install both trailer connection plugs (a), license plate lights (b), and the TPMS antenna (c) into their respective mounting locations. Use the OE bolts to secure the license plate lights and the OE trim fasteners to secure the TPMS antenna.

Reconnect the wiring harness and secure it to the inside of the bumper with the provided zip ties. Be sure there is adequate slack and the harness is not pulling on any of the connections. Re-route the harness if necessary.

Step 9: 6" Light Bars



If installing 6" light bars into the bumper, do it at this time.

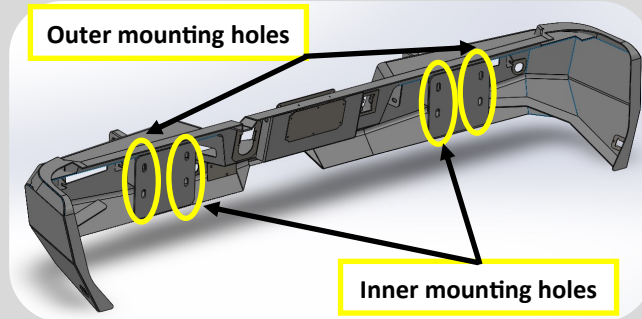
6" Light Bars are not included with this rear bumper.



For Technical Support / Warranty Information please call **800-776-0767** or email info@smittybilt.com
1017 W 600 N, STE 4, Ogden, UT 84404

Installation Instructions: Bumper Installation

Step 10: Bumper Installation



Lift the SB Adventure Series bumper onto the back of the vehicle where it will be mounted and rest it on the hitch. As you slide it into place, connect the trailer camera wire to the plug.

Using the provided M12 hardware, place a bolt and washer in the two (2) outer mounting hole on either side of the bumper (4 total). Place another washer and a nylock nut on each bolt. **Do not tighten all of the way.**

Place the four (4) OE bolts from **Step 4** in each of the inner mounting holes on the bumper. **Do not tighten all of the way.**

Center the SB rear bumper on your vehicle. With the bumper centered, raise the bumper up as high as it will go and fully tighten all eight (8) mounting bolts. 13mm, 18mm, and 19 mm wrenches will be needed.



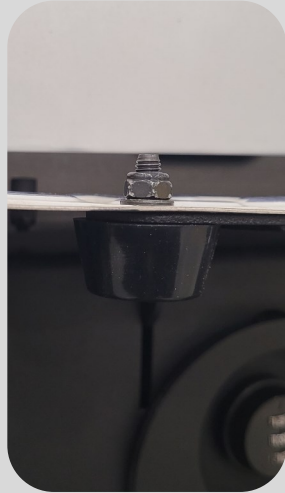
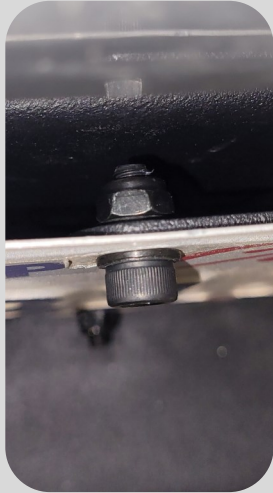
Step 11: Reconnect Wire Harness

Reconnect the bumper wiring harness inside of the driver side corner of the bumper.



For Technical Support / Warranty Information please call **800-776-0767** or email info@smittybilt.com
1017 W 600 N, STE 4, Ogden, UT 84404

Installation Instructions: Bumper Installation



Step 12: License Plate Installation

Using a 10mm wrench, 4mm allen, and the provided M6 hardware, install your license plate onto the license plate mount. Use the shortest possible hardware for the top two (2) bolts to avoid scratching the bumper when opening the cubby. Use the longest hardware with the rubber bumpers for the bottom two (2) bolts.

Step 13:

Torque all hardware to recommended specs. Make sure all wire plugs are connected. Reconnect battery, remove all masking tape, and raise spare tire back up under the vehicle.



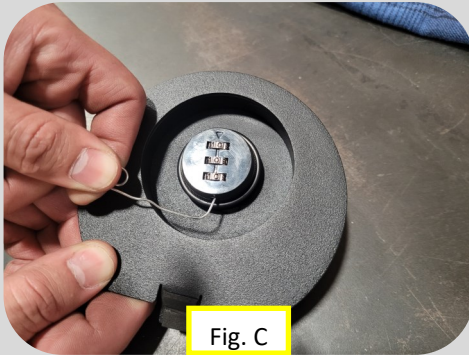
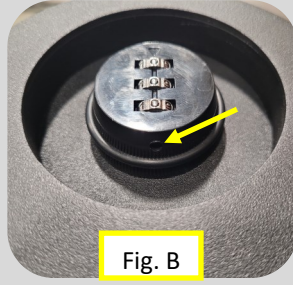
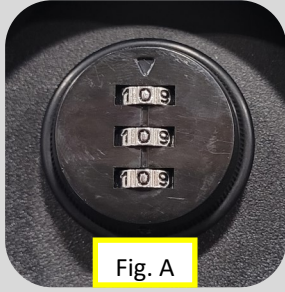
Congratulations! Your installation is now complete.

Enjoy your Smittybilt Adventure Series Bumper



For Technical Support / Warranty Information please call **800-776-0767** or email info@smittybilt.com
1017 W 600 N, STE 4, Ogden, UT 84404

Locking Cubby Cover Instructions



Changing Lock Combination

The default lock combination is **0-0-0**.

To change the combination, set the lock to 0-0-0 and turn the lock to the locked position (Fig. A).

Locate the reset pin on the bottom of the lock (Fig. B).

Insert a small pick or paperclip to press in the pin (Fig. C) and hold while changing the code. Be careful not to release the pin while changing the code. Align all numbers to your desired code and release the pin. Rotate lock to confirm new code works.

Cleaning and maintenance instructions

For longevity, clean lock every 3-6 months. Use compressed air to blow dust out of the lock dials. Spray the lock with a spray cleaner such as brake cleaner or gun cleaner, cycle the dials a few times, and let dry. Finally, spray the dials with a lock dry lubricant or synthetic lubricant, cycle the dials, wipe extra lubricant off the lock face, and let dry.

NOTE: Do not use oil-based cleaners or lubricants as they will collect more dust in the lock over time.

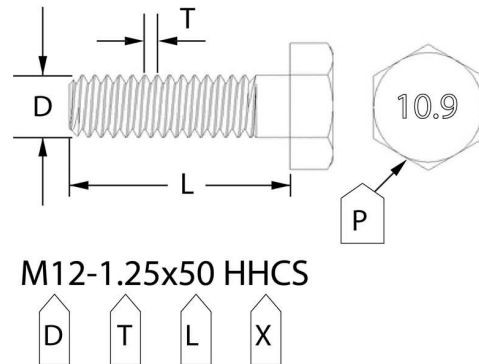
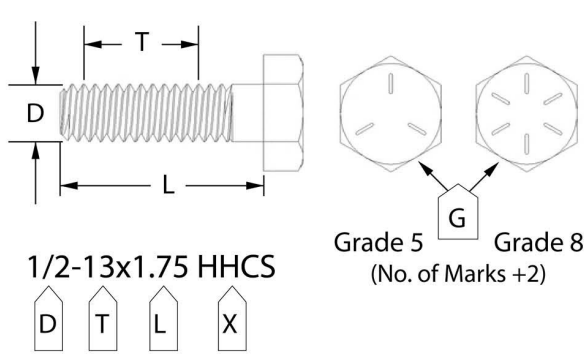


For Technical Support / Warranty Information please call **800-776-0767** or email info@smittybilt.com
1017 W 600 N, STE 4, Ogden, UT 84404

Bolt Torque Specifications

Use this only as a guide for hardware without a called out torque specification in the instruction manual.

Bolt Torque and ID						
Decimal System			Metric System			
<i>All Torques in Ft. Lbs. Maximums</i>						
Bolt Size	Grade 5	Grade 8	Bolt Size	Class 9.8	Class 10.9	Class 12.9
5/16	15	20	M6	5	9	12
3/8	30	45	M8	18	23	27
7/16	45	60	M10	32	45	50
1/2	65	90	M12	55	75	90
9/16	95	130	M14	85	120	145
5/8	135	175	M16	130	165	210
3/4	185	280	M18	170	240	290



G= Grade (Bolt Strength)
 D= Nominal Diameter (Inches)
 T= Thread Count (Threads per Inch)
 L= Length (Inches)
 X= Description (Hex Head Cap Screw)

P= Property Class (Bolt Strength)
 D= Nominal Diameter (Millimeters)
 T= Thread Pitch (Thread Width, mm)
 L= Length (Millimeters)
 X= Description (Hex Head Cap Screw)



For Technical Support / Warranty Information please call **800-776-0767** or email info@smittybilt.com
 1017 W 600 N, STE 4, Ogden, UT 84404

Notes and Disclaimers

Product cleaning and maintenance instructions

Stainless Steel Finish – Aluminum polish may be used to polish small scratches and scuffs on the finish. Mild soap, window or glass cleaner may be used to clean the finish. Dual state powder coat finish – Mild soap, window or glass cleaner may be used to clean the finish. In order to protect the finish, you may wax your product on a regular basis with pure carnauba automotive wax. Do not use any types of soap, polish or wax that contains abrasive that could damage the finish. Textured coated finishes should be cleaned with a mild soap on a damp sponge. Do not apply polish or wax that requires to be removed by means of buffing. This type of wax is commonly used at car wash facilities. Chrome Finish – Mild soap, window or glass cleaner may be used to clean the finish. In order to protect the finish, you should wax your product on a regular basis with pure carnauba automotive wax. Do not use any types of soap, polish or wax that contains abrasive that could damage the finish.

Limited Warranties

Smittybilt's products are covered under the following limited warranties only. Note that the duration of the limited warranty differs according to the material and finish of the product purchased. Subject to the duration and conditions of the limited warranty stated below, Smittybilt warrants to the original retail purchaser that its products are free from defects in material and workmanship. All other warranties and representations express or implied, are hereby disclaimed, including fitness for merchantability and buyer's intended use or purpose. All parts are sold "AS IS" except for the limited warranties granted herein. Buyer assumes all risks as to the selection, suitability and performance of all goods and products selected. This limited warranty does not cover damage or impairment in any part due to misuse, improper installation, accident or contact with on-road or off-road hazards, product modification, improper or inadequate cleaning and/or maintenance. Smittybilt is not responsible for items damaged during shipping. This warranty is not transferable from the original buyer. For the original Buyer to be eligible for the limited warranty coverage, the Buyer must provide proof of purchase. Smittybilt strongly recommends returning the warranty registration card. Customer's remedy hereunder shall be limited only to repair or replacement (at Smittybilt's option) of any defective part(s) returned to Smittybilt at customer's expense. The determination of whether or not a returned part is defective or subject to coverage under the limited warranties stated herein shall be made at Smittybilt's sole discretion. To assure product quality, Smittybilt reserves the right to change product design, material, specification and finishes without prior notice to customers. This limited warranty gives you specific legal rights and you may also have other rights, which may vary from state to state. Some states do not allow limitations on how long an implied warranty lasts, so the above limitations may not apply as to you. Also, some states do not allow the exclusion or limitation of incidental or consequential damages, so the above limitations or exclusions may not apply to you. Smittybilt reserves the right to discontinue product lines and substitute products or provide other remedies than those listed in this limited warranty for those discontinued products.

Warning

Rollover and other types of vehicle accidents may result in serious injury or death to you, your passengers and others sharing the road. Smittybilt accessories are decorative and are not intended to reduce or avoid injury or damage in the event of an accident. The weight and location of Smittybilt accessories may affect your vehicles' handling, stability and performance, creating an increased risk of accident or rollover. Before installing any accessory, check state laws and assure that the accessory will not obscure any lights or interfere with proper operation on your vehicle's safety equipment. Consult your owner's manual and the Smittybilt instructions, or additional safety information. Smittybilt products, nor the warnings contained herein, are not a substitute for your safe driving. Don't drink and drive, always use seat belts and don't drive faster than conditions permit.



WARNING: Cancer and Reproductive Harm
www.P65Warnings.ca.gov



For Technical Support / Warranty Information please call **800-776-0767** or email info@smittybilt.com
1017 W 600 N, STE 4, Ogden, UT 84404