

Installation Instructions



**19'-24' Dodge Ram 1500
Adventure Series Rear Bumper
Part #: S/B613909**



For Technical Support / Warranty Information please call **800-776-0767** or email info@smittybilt.com
1017 W 600 N, STE 4, Ogden, UT 84404

Introduction

Thank you for choosing Smittybilt accessories for your vehicle. If you would like to view our full range of available accessories, please visit us at www.smittybilt.com



Important Notes Before Starting

! IMPORTANT NOTE

Carefully read through this entire instruction manual thoroughly before attempting to install this part. Check that all fasteners are properly torqued after installation and driving a short distance. Fasteners should be checked regularly.

! WARNING

Serious injury can occur when working on vehicles alone.

When possible, work with another person to reduce risk of injury from strain or other dangers that can occur when working alone.

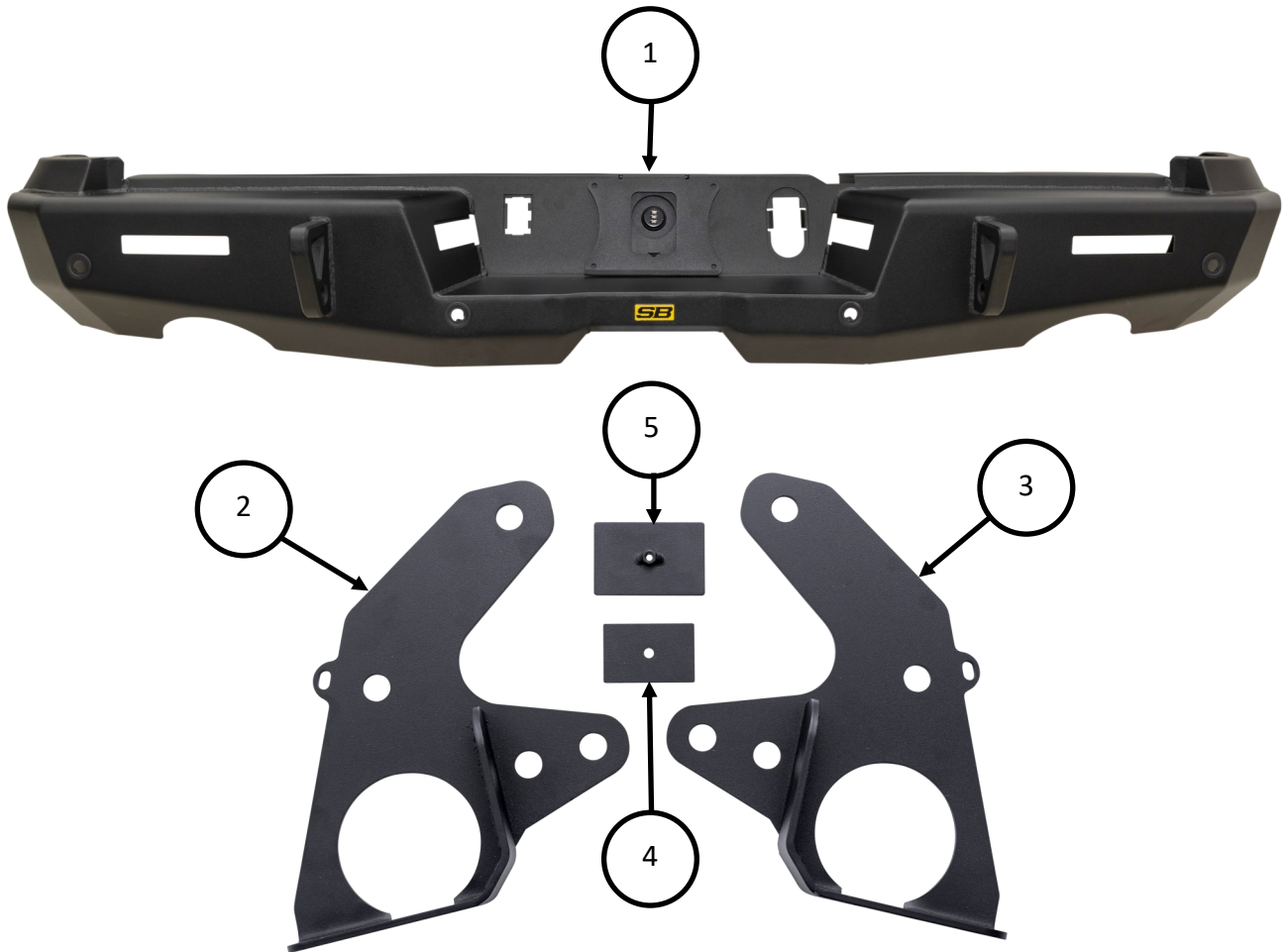
TOOLS REQUIRED

Socket Wrench	Trim Removal Pry Tool	
Socket Wrench Set	Hex Key Set	
Crescent Wrench Set		



For Technical Support / Warranty Information please call **800-776-0767** or email info@smittybilt.com
1017 W 600 N, STE 4, Ogden, UT 84404

Box Contents



Item	Description	QTY
1	Adventure Series Rear Bumper	1
2	Bumper Mounting Bracket DS	1
3	Bumper Mounting Bracket PS	1

Item	Description	QTY
4	Back-up Camera Plug Cover Plate	1
5	Back-up Cam. Plug Cover Nut Plate	1
0	Installation Hardware	



For Technical Support / Warranty Information please call **800-776-0767** or email info@smittybilt.com
 1017 W 600 N, STE 4, Ogden, UT 84404

Hardware Packs

Item	Description	QTY
Mounting Hardware		
1	M12x1.75x35MM HHCS	6
2	M12x1.75 Nut	2
3	M12 Lock Washer	6
4	M12 Flat Washer	8
5	M12 Nut Plate	2
6	M6x1.0x20MM BHCS	1
7	M6 Flat Washer	1
8	M5x0.80x15MM BHCS	2
9	M5x0.80 Lock Nut	2
10	M5 Flat Washer	4
License Plate Hardware		
1	M6x1.0x15MM BHCS	2
2	M6x1.0x12MM BHCS	2
3	M6x1.0x10MM BHCS	2
4	M6x1.0 Lock Nut	4
5	M6 Flat Washer	8
6	Rubber Bumper	2
7	Hex Key	1
Sensor Bezel Hardware		
1	Sensor Bezel Back Cap	4
2	Back Cap Foam	4
3	Bezel Round Foam	4
4	Bezel Cap	4
5	Sensor Mounting Screws	8



For Technical Support / Warranty Information please call **800-776-0767** or email info@smittybilt.com
1017 W 600 N, STE 4, Ogden, UT 84404

Installation Instructions

Step 1: Set-Up

Open the box containing your Smittybilt Rear Bumper and check all parts against the Bill of Materials outlined on the first few pages of these instructions. If anything is missing, contact Smittybilt factory technical support.

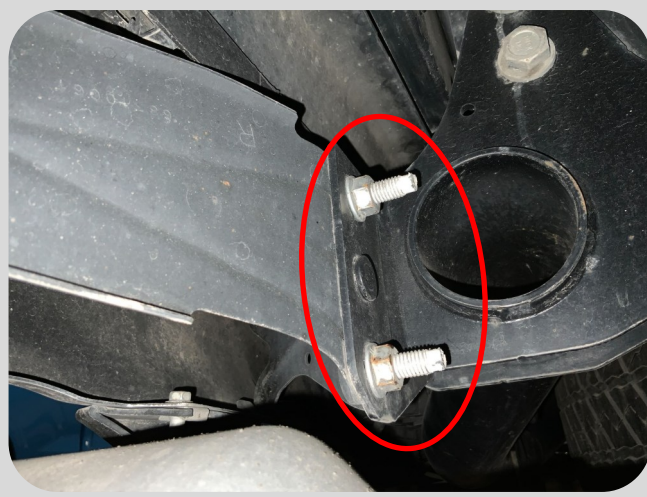
Read all instructions before installation. Park vehicle on a flat, level surface. Disconnect your battery and apply the parking brake.



Step 2: Disconnect Wiring Harness

Start by disconnecting the rear bumper wiring harness under the driver side rear corner of the vehicle.

Pull the red tab out and unplug the wiring harness. Undo any clips securing the harness to the frame of the vehicle.



Step 3: Unbolt Bumper

Remove the two nuts on either side of the vehicle bolting the bumper to the frame.



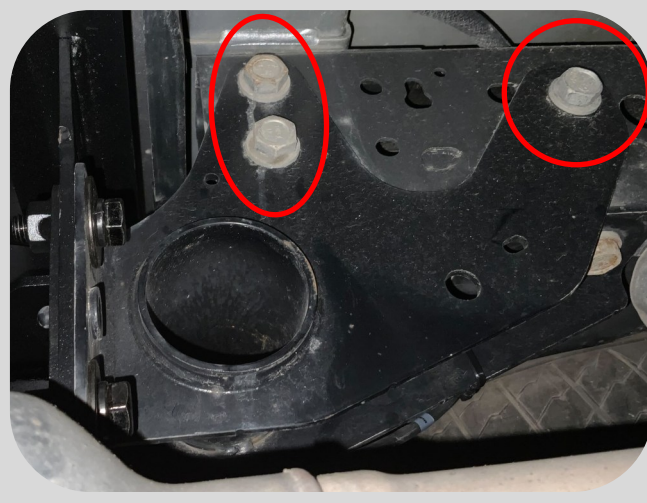
For Technical Support / Warranty Information please call **800-776-0767** or email info@smittybilt.com
1017 W 600 N, STE 4, Ogden, UT 84404

Installation Instructions



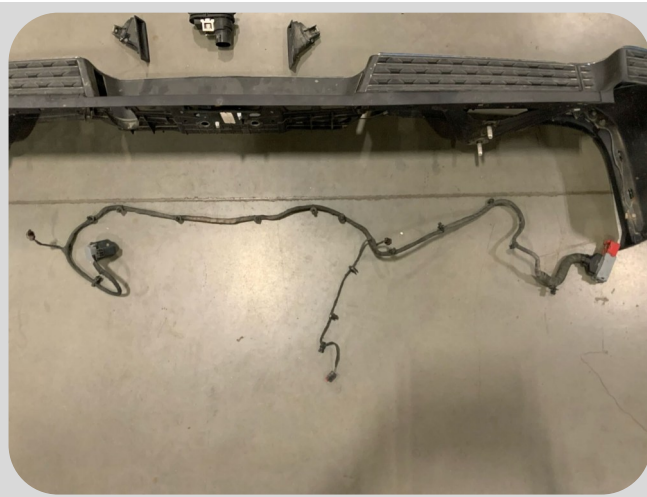
Step 4: Unbolt License Plate bolts

Take off the license plate and remove the two bolts hidden behind the license plate, then remove the bumper from the vehicle.



Step 5: Factory Bolt Removal

Remove the three factory bolts indicated in the photo from either side of the rear of the vehicle. Save these bolts for later.



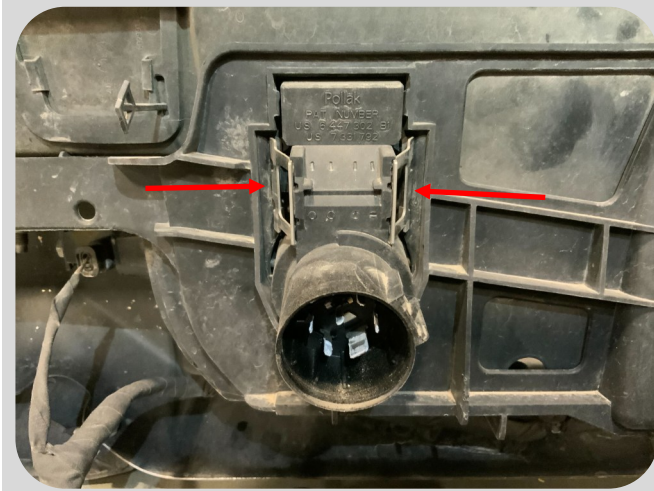
Step 6: Wiring Harness Removal

Remove the bumper wiring harness from the bumper by unplugging it from all lights, sensors, and plugs and by undoing any retaining clips holding it to the bumper.



For Technical Support / Warranty Information please call **800-776-0767** or email info@smittybilt.com
1017 W 600 N, STE 4, Ogden, UT 84404

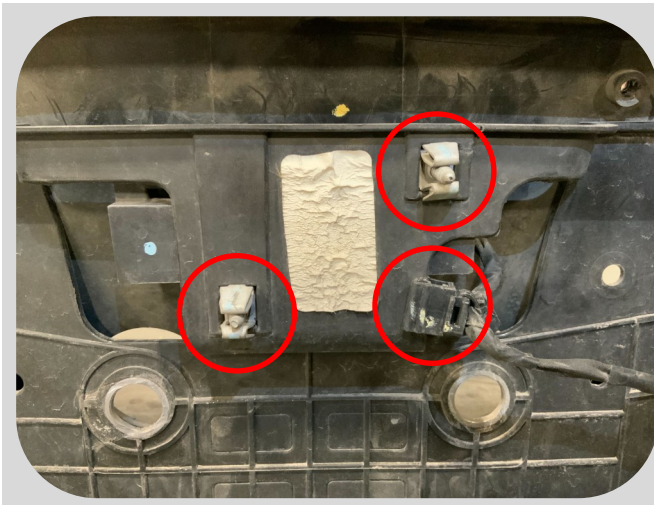
Installation Instructions



Step 7: Plug removal

Press in the tab on either side of the trailer plug and push it out of the bumper.

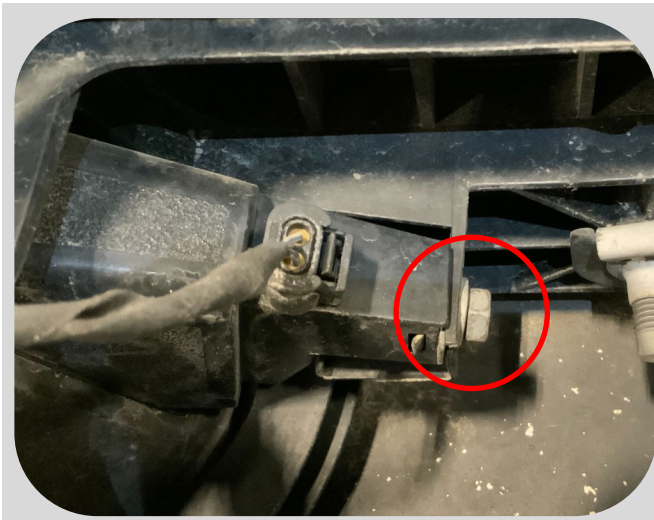
If your bumper is equipped with a back up camera plug, remove it as well.



Step 8: Sensor Removal

Remove parking sensors and the tpms sensor.

To remove the TPMS sensor, unplug the harness from the sensor and remove the retaining clip holding the harness to the bumper, then remove the two factory bolts by pulling back on the bumper plastic to open up space around the sensor and use a ratcheting wrench to remove the bolts.



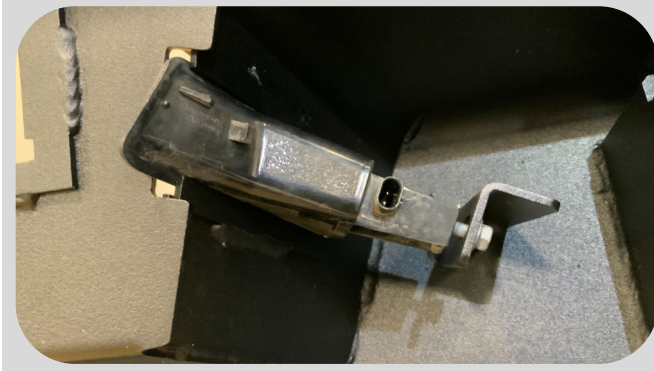
Step 9: License Plate Light Removal

To remove the license plate lights, remove the bolt on the back of each light securing them to the bumper, then remove each light from the bumper. Save the bolt from each light for installation in your Smittybilt bumper.



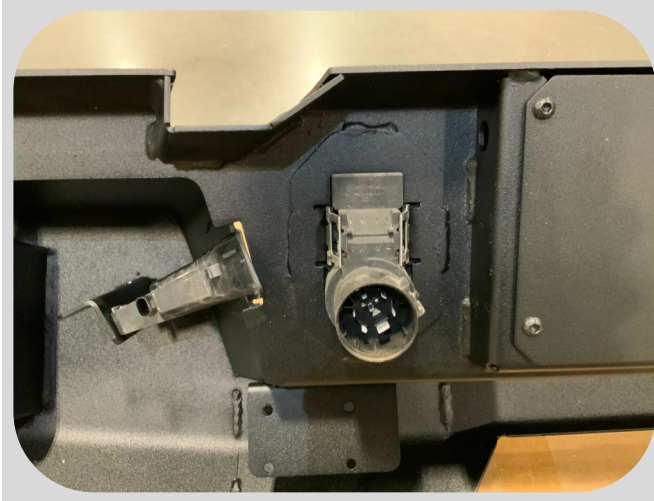
For Technical Support / Warranty Information please call **800-776-0767** or email info@smittybilt.com
1017 W 600 N, STE 4, Ogden, UT 84404

Installation Instructions



Step 10: License Plate Lights Install

Slide the license plate lights into their slots in the Smittybilt bumper, making sure to keep them on their correct sides from factory. Use the OEM license plate light bolts to secure the lights to the bumper using the license plate light mounting tab in the bumper.



Step 11: Plug installation

Insert the trailer plug into the bumper from the front of the bumper, making sure the tabs on either side of the plug click into place and hold the plug securely in the bumper.

If your vehicle has a backup camera plug, install it in the bumper at this time as well.



Step 12: Parking Sensor Install

If your vehicle does not have parking sensors, click a bezel cap into the front of each bezel.

If your vehicle does have parking sensors, start by removing the center from the round foam pieces and discarding the centers. Remove the sticky backing and place a round foam piece in each bezel.



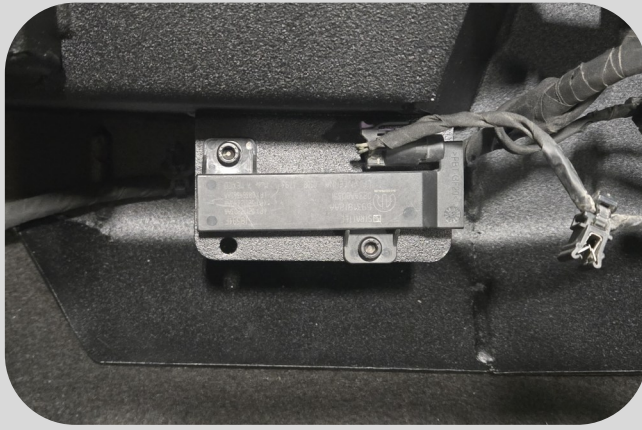
For Technical Support / Warranty Information please call **800-776-0767** or email info@smittybilt.com
1017 W 600 N, STE 4, Ogden, UT 84404

Installation Instructions



Step 13: Parking Sensors Cont.

Remove the small center pieces and take the sticky backing off of the remaining foam pieces and stick one onto each bezel back cap. Insert a parking sensor into each bezel in the factory locations and orientations, then click a back cap onto each bezel to hold the sensor in place. If needed, screw a provided phillips head screw into the top and bottom of each bezel to better position each sensor.



Step 14: TPMS Sensor Install

Using the provided M5 hardware, install the TPMS sensor onto the sensors mounting tab in the bumper.



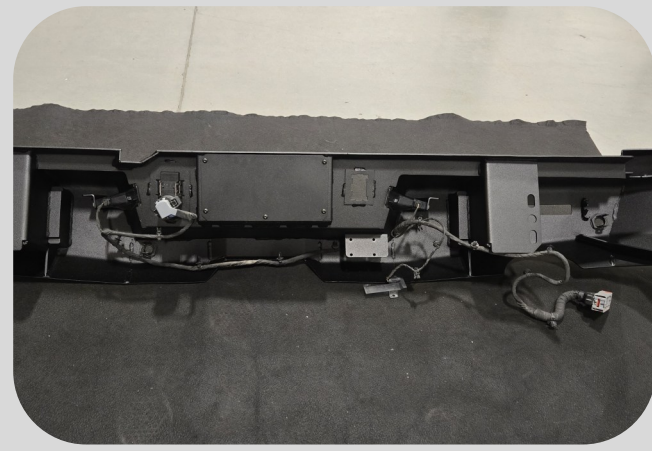
Step 15: Back-up Light Installation

If you are installing lights into your Smittybilt rear bumper, do so at this time. Follow the instructions for you lights to install and wire them.



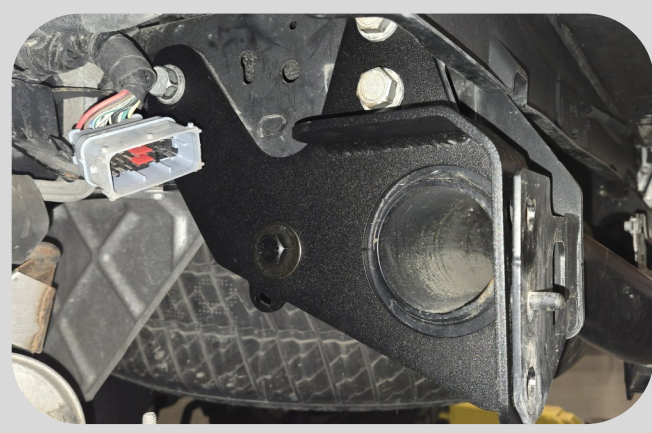
For Technical Support / Warranty Information please call **800-776-0767** or email info@smittybilt.com
1017 W 600 N, STE 4, Ogden, UT 84404

Installation Instructions



Step 16: Wiring Harness Installation

With all lights, plugs, and sensors installed into the bumper, you can then install the harness into the bumper and plug everything in.



Step 17: Bumper Mounting Brackets

Install the bumper mounting brackets onto both sides of the vehicle using the factory bolts removed from the vehicle in *Step 5*, along with an M12 bolt, 2 washers, a lock washer, and a nut per side. Don't tighten any of this hardware down completely.



Step 18: Bumper Installation

With help, lift the bumper into place on the vehicle, making sure the wiring harness doesn't get caught or stuck anywhere. Use the remaining M12 hardware and nut plates to secure the bumper to the vehicle.



For Technical Support / Warranty Information please call **800-776-0767** or email info@smittybilt.com
1017 W 600 N, STE 4, Ogden, UT 84404

Installation Instructions



Step 19: Wiring Harness

Make sure the wiring harness is not caught or pinched anywhere in the bumper. Plug the bumper wiring harness in and push in the red tab. Secure the harness in place with zip ties if necessary.

Step 20: Finish up

Make all final checks around the bumper to make sure everything is plugged in, secured, and positioned properly, then tighten down all hardware to the specifications at the end of these instructions.



Congratulations! Your install is now complete.

Enjoy your new Smittybilt Adventure Series Rear Bumper

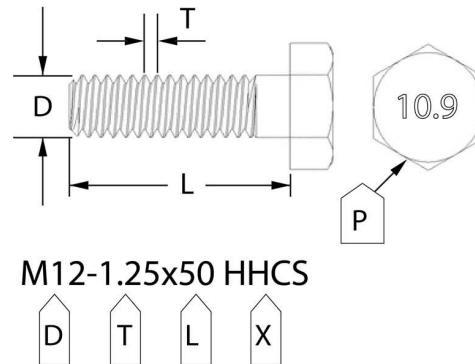
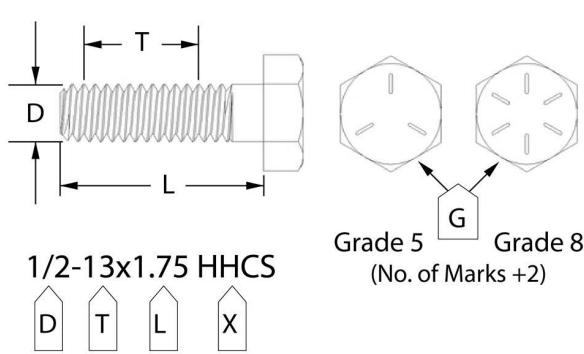


For Technical Support / Warranty Information please call **800-776-0767** or email info@smittybilt.com
1017 W 600 N, STE 4, Ogden, UT 84404

Bolt Torque Specifications

Use this only as a guide for hardware without a called out torque specification in the instruction manual.

Bolt Torque and ID						
Decimal System			Metric System			
<i>All Torques in Ft. Lbs. Maximums</i>						
Bolt Size	Grade 5	Grade 8	Bolt Size	Class 9.8	Class 10.9	Class 12.9
5/16	15	20	M6	5	9	12
3/8	30	45	M8	18	23	27
7/16	45	60	M10	32	45	50
1/2	65	90	M12	55	75	90
9/16	95	130	M14	85	120	145
5/8	135	175	M16	130	165	210
3/4	185	280	M18	170	240	290



G= Grade (Bolt Strength)
 D= Nominal Diameter (Inches)
 T= Thread Count (Threads per Inch)
 L= Length (Inches)
 X= Description (Hex Head Cap Screw)

P= Property Class (Bolt Strength)
 D= Nominal Diameter (Millimeters)
 T= Thread Pitch (Thread Width, mm)
 L= Length (Millimeters)
 X= Description (Hex Head Cap Screw)



For Technical Support / Warranty Information please call **800-776-0767** or email info@smittybilt.com
 1017 W 600 N, STE 4, Ogden, UT 84404

Notes and Disclaimers

Product cleaning and maintenance instructions

Stainless Steel Finish – Aluminum polish may be used to polish small scratches and scuffs on the finish. Mild soap, window or glass cleaner may be used to clean the finish. Dual state powder coat finish – Mild soap, window or glass cleaner may be used to clean the finish. In order to protect the finish, you may wax your product on a regular basis with pure carnauba automotive wax. Do not use any types of soap, polish or wax that contains abrasive that could damage the finish. Textured coated finishes should be cleaned with a mild soap on a damp sponge. Do not apply polish or wax that requires to be removed by means of buffing. This type of wax is commonly used at car wash facilities. Chrome Finish – Mild soap, window or glass cleaner may be used to clean the finish. In order to protect the finish, you should wax your product on a regular basis with pure carnauba automotive wax. Do not use any types of soap, polish or wax that contains abrasive that could damage the finish.

SMITTYBILT ADVANTAGE WARRANTY

LIMITED-LIFETIME WARRANTY FOR STRUCTURAL COMPONENTS

5-YEAR FINISH WARRANTY

Smittybilt Automotive Products, LLC (SAP) warrants to the original purchaser that (a) the physical components (e.g., metal components, welds, etc.) of any SAP 19'-24' Dodge Ram 1500 Adventure Series Rear Bumper will be free of defects in material and workmanship for the lifetime of the product from the date of purchase of the 19'-24' Dodge Ram 1500 Adventure Series Rear Bumper, and (b) the finish will be free of defects in material and workmanship for a period of 5-years from the original date of purchase. This warranty applies only to the original purchaser of the 19'-24' Dodge Ram 1500 Adventure Series Rear Bumper and non-transferable. To obtain any warranty service, you must provide SAP with a proof of purchase and date of purchase that is acceptable to SAP, such as a copy of your purchase receipt.

This warranty does not cover labor of part replacement of the 19'-24' Dodge Ram 1500 Adventure Series Rear Bumper. SAP will, at its sole discretion, provide replacement part(s) for a defective 19'-24' Dodge Ram 1500 Adventure Series Rear Bumper or component, provided this is done within the warranty period. To request assistance under warranty, one must call or email using the phone number or email at the bottom of this page. This warranty does not apply (1) wearable components; or (2) if the 19'-24' Dodge Ram 1500 Adventure Series Rear Bumper has been damaged, including, but not limited to: abuse, misuse, collision, modification, misapplication, improper installation, or improper service. This warranty is void if any SAP serial number has been removed or defaced; or if the 19'-24' Dodge Ram 1500 Adventure Series Rear Bumper is used for any commercial, industrial, or rental applications. This warranty only applies to 19'-24' Dodge Ram 1500 Adventure Series Rear Bumper bought, sold, and used within the United States or Canada unless otherwise specifically agreed in writing by SAP.

THE WARRANTY SET FORTH ABOVE IS THE ONLY WARRANTY. THERE ARE NO OTHER WARRANTIES, EXPRESSED OR IMPLIED, INCLUDING BUT NOT LIMITED TO IMPLIED WARRANTIES OF MERCHANTABILITY OR FITNESS FOR A PARTICULAR PURPOSE. ANY IMPLIED WARRANTY WHICH BY LAW MAY NOT BE EXCLUDED IS LIMITED TO A DURATION OF ONE (1) YEAR FROM THE DATE OF ORIGINAL RETAIL PURCHASE OF THE PRODUCT. No SAP dealer, agent, or employee is authorized to make any modification, extension or addition to this warranty. SAP SHALL NOT BE LIABLE FOR SPECIAL, INDIRECT, INCIDENTAL OR CONSEQUENTIAL DAMAGES (INCLUDING, BUT NOT LIMITED TO, LOST PROFITS, DOWN TIME OR LOSS OF USE) UNDER ANY LEGAL THEORY, EVEN IF SAP WAS ADVISED OF THE POSSIBILITY OF SUCH DAMAGES. Some states do not allow the exclusion of implied warranties or the exclusion or limitation of liability for incidental or consequential damages, or limitations on how long an implied warranty lasts, so the above limitation or exclusion may not apply to you. This Warranty gives you specific legal rights. You may also have other rights that vary from state to state. SAP reserves the right to change product design without notice. In situations in which SAP has changed a product design, SAP shall have no obligation to upgrade or otherwise modify previously manufactured products. For warranty inquiries contact SAP at:

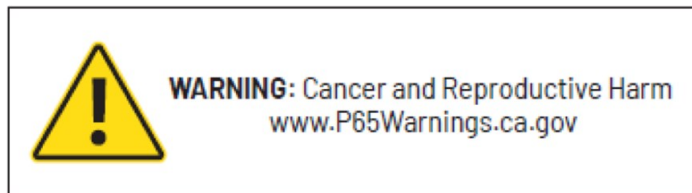
Smittybilt Automotive Products, LLC

Customer Service Department

Call 1-800-776-0767 or

ment

Email info@smittybilt.com



For Technical Support / Warranty Information please call **800-776-0767** or email info@smittybilt.com
1017 W 600 N, STE 4, Ogden, UT 84404