

Installation Instructions



Adventure Series Rear Bumper Part #S/B613943 2022+ Toyota Tundra



For Technical Support / Warranty Information please call 1-888-717-5797
Smittybilt, 1017 W 600 N STE 4, Ogden, UT 84404

Introduction

Thank you for choosing Smittybilt accessories for your Toyota Tundra®. If you would like to view our full range of available accessories, please visit us at www.smittybilt.com



Angular Drop Steps



Winches



Overland Tents

Toyota® & Tundra® are registered trademarks of Toyota Motor Corporation.

Important Notes Before Starting



IMPORTANT NOTE

Carefully read through this entire instruction manual thoroughly before attempting to install this part.



WARNING

Serious injury can occur when working on vehicles alone.

When possible, work with another person to reduce risk of injury from strain or other dangers that can occur when working alone.

The following tools will be required to complete the installation of this part:

TOOLS REQUIRED

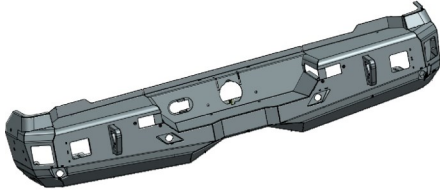
Trim Pry Tool	Chisel & Mallet	Metric socket set
Socket wrench	Needle nose Pliers	Flush cut Pliers
Grinder		



For Technical Support / Warranty Information please call 1-888-717-5797
Smittybilt, 1017 W 600 N STE 4, Ogden, UT 84404

Box Contents

1



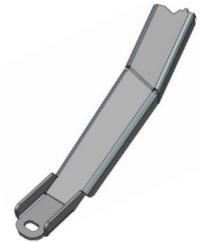
2



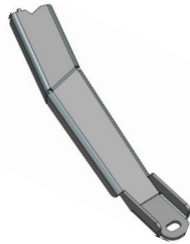
3



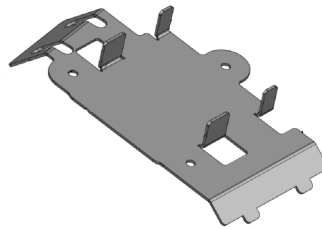
4



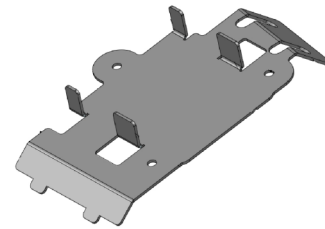
5



6



7



2022+ Tundra Rear Adventure Series Bumper		
Item	DESCRIPTION	QTY
1	Tundra Rear Bumper	1
2	Locking Cubby Cover	1
3	Mounting Bracket	2
4	Driver Support Bracket	1
5	Passenger Support Bracket	1
6	BLIS Relocation Bracket - Driver	1
7	BLIS Relocation Bracket - Passenger	1
	BLIS Cover Plate	2
	Driver Spacer Plate	1
	Passenger Spacer Plate	1
	Bolt Plate	4
	Sensor Retaining Caps	4
	Plastic Sensor Hole Plugs	4

2022+ Tundra Rear Adventure Series Bumper		
Item	DESCRIPTION	QTY
	M12-1.75 Prevailing Torque Nut	12
	M12 Flat Washer	8
	M8-1.25x20mm Hex Bolt	2
	M8-1.25 Prevailing Torque Nut	2
	M8 Flat Washer	4
	M6-1.0x16mm Button Head Bolt	2
	M6-1.0x12mm Button Head Bolt	2
	M6-1.0x10mm Button Head Bolt	2
	M6-1.0 Prevailing Torque Nut	24
	M6 Flat Washer	14
	M6 Large Flat Washer	10
	#4 Phillips Screw	8
	Sensor Spacer Foam	4



For Technical Support / Warranty Information please call 1-888-717-5797
Smittybilt, 1017 W 600 N STE 4, Ogden, UT 84404

Installation Instructions: Tundra Rear Adventure Bumper

WARNING

Chock all four wheels and make sure parking brake is engaged before starting this install. Failure to do so could result in serious injury. Place masking tape on the areas of the rear fenders and tailgate that can be scratched by OE bumper removal.

Step 1: Box Check

Open the box containing your Adventure Series Rear Bumper, check all parts against the box contents found on page 3.

If anything is missing, contact Smittybilt technical support immediately.



Step 2: Disconnect Battery

Remove both terminals from the battery to protect parking sensors and the BLIS system during install.

Note: Failure to disconnect the battery may result in a BLIS system fault.



Step 3: Disconnecting the Harness

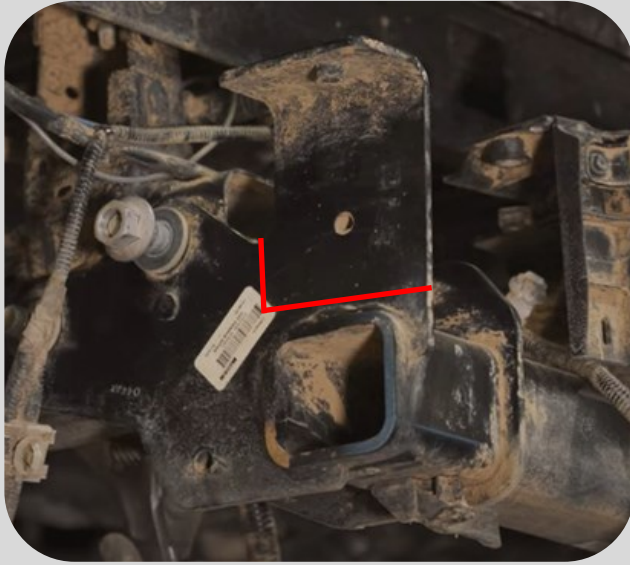
If equipped, disconnect the wire harness from the parking sensors, 7-pin trailer plug, and BLIS sensors.

Disconnect the harness from the license plate lights.



For Technical Support / Warranty Information please call 1-888-717-5797
Smittybilt, 1017 W 600 N STE 4, Ogden, UT 84404

Installation Instructions: Tundra Rear Adventure Bumper



Step 4: Mounting Prep

Remove the **OE bumper** from the vehicle.

Starting on the driver's side and with PPE on. Use an angle grinder with a cutoff wheel to carefully cut the **OE bumper brackets** off the hitch at the lines shown.

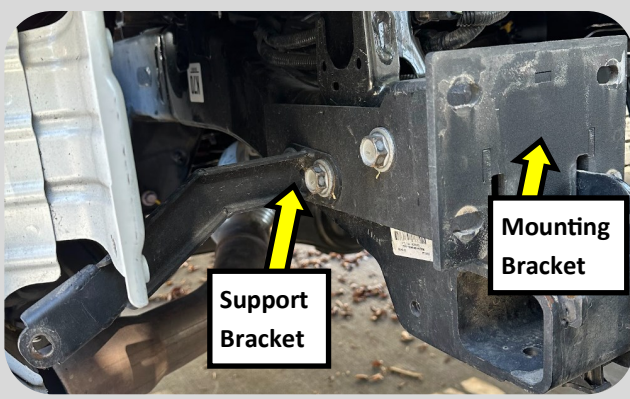
Repeat this cut on the passenger side.

Be sure to clean and paint over any exposed metal created by the cut. Failure to do so will allow rust to form.



Step 5: OE Bolt Removal

Starting on the driver's side, remove the **(3) OE M12 Bolts and Nuts**.



Step 6: Mounting Brackets

Install the **Driver Side Mounting Bracket** and **Driver Support Bracket** using the previously removed **OE hardware**. Do not torque the hardware yet.

Repeat this step on the passenger side, using the **Passenger Side Mounting Bracket** and **Passenger Support Bracket**.



For Technical Support / Warranty Information please call 1-888-717-5797
Smittybilt, 1017 W 600 N STE 4, Ogden, UT 84404

Installation Instructions: Tundra Rear Adventure Bumper



Step 7: BLIS Sensor Install

Remove both BLIS sensors from the OE bumper. Then, using the **OE** hardware, install the BLIS sensor to their respective **BLIS Relocation Brackets**.

Install the **BLIS Cover Plates** into the bumper making sure they will be right-side up.

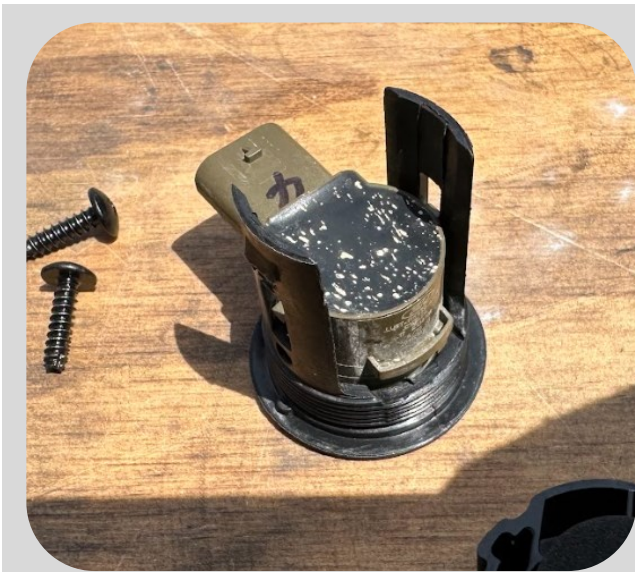
If you do not have BLIS sensors, install the **BLIS Relocation Bracket** and **Cover Plates** without the sensor.



Step 8: BLIS Sensor Install

With the **Cover Plates** in place, install the **BLIS Sensor Assembly** into the bumper and securing it using the provided (**2 per assembly**) **M6 Large Flat Washers** and **M6-1.0 Prevailing Torque Nuts**.

Torque these bolts to spec using the guide provided on **Page 10** of this guide.



Step 9: Parking Sensor Install

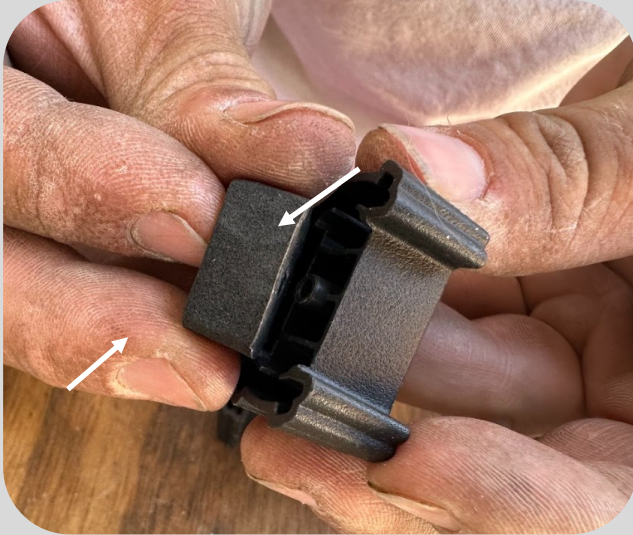
Carefully release the sensors from the factory retaining brackets. Be sure to note the position and orientation of each sensor.

Note: For vehicles without parking sensors, install the included (**4**) **Sensor Plugs**. Then, skip to **Step 12**



For Technical Support / Warranty Information please call 1-888-717-5797
Smittybilt, 1017 W 600 N STE 4, Ogden, UT 84404

Installation Instructions: Tundra Rear Adventure Bumper



Step 10: Parking Sensor Install

Prep each sensor retainer by installing all (4) **Half-Circle Sensor Foam** onto all (4) **Sensor Retainers**.



Step 11: Parking Sensor Install

Install all 4 OE parking sensors into the pre-installed (4) **Sensor Mounts** in the bumper. Be sure the position and orientation is the same as it was in the factory bumper. Install all (4) **Sensor Retainers** by pressing them into place until you hear a click.



Step 12: Trailer Plug

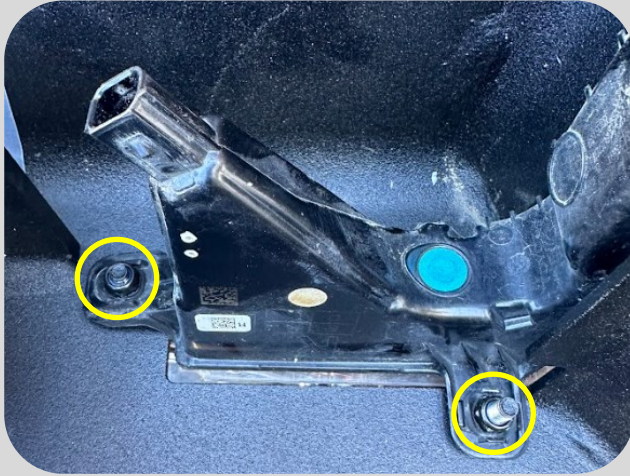
On the OE bumper, carefully press in the retaining clips on the trailer plug and push the plug assembly out.

Then, reinstall the plug into the **Adventure Series Rear Bumper**



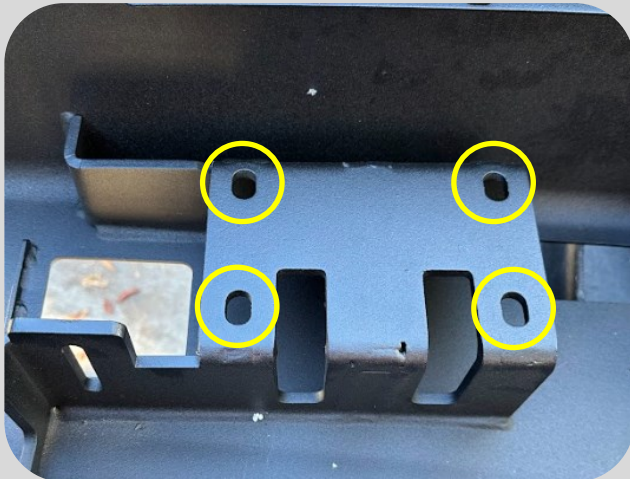
For Technical Support / Warranty Information please call 1-888-717-5797
Smittybilt, 1017 W 600 N STE 4, Ogden, UT 84404

Installation Instructions: Tundra Rear Adventure Bumper



Step 13: License Plate Light Install

Remove both license plate lights from the OE bumper. Then install them into their respective locations using the included **(2 per light) M6-1.0 Prevailing Torque Nuts** and **M6 Flat Washers**.



Step 14: Bumper Prep

Install the included **(2 per side) Bolt Plates** into the holes shown. Use the included **Plastic Retainers** to keep them in place.



Step 15: 2" Cube Light Install

If you plan to install 2" cube lights, do so now. Be sure to install them according to the light manufacturer's instructions.



For Technical Support / Warranty Information please call 1-888-717-5797
Smittybilt, 1017 W 600 N STE 4, Ogden, UT 84404

Installation Instructions: Tundra Rear Adventure Bumper



Step 16: Bumper Install

With the assistance of another person and/or a jack, carefully lift the bumper into place making sure to the bolts slide into the holes on the previously installed **Mounting Brackets**.

With the bumper in place, secure the bumper to the **Mounting Brackets** using the included **(4 per side) M12 Flat Washers** and **M12-1.75 Prevailing Torque Nuts**. Do not torque the hardware yet.



Step 17: Bumper Install

Secure the bumper to the support brackets using the included **(1 per side) M8-1.25x20mm Hex Bolt**, **(1) M8 Prevailing Torque Nut**, and **(2) M8 Flat Washers**. Do not torque the hardware yet.



Step 18: Bumper Install

Adjust the bumper until happy with the fitment. Then torque all the mounting hardware using the guide on **Page 10**.

Installation is now complete.

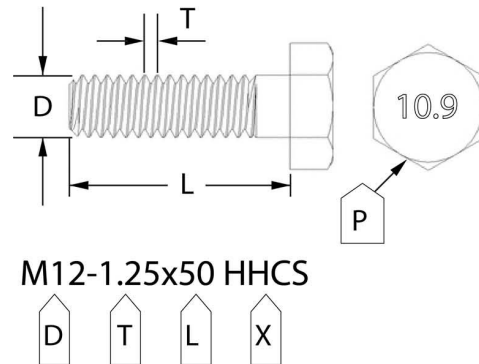
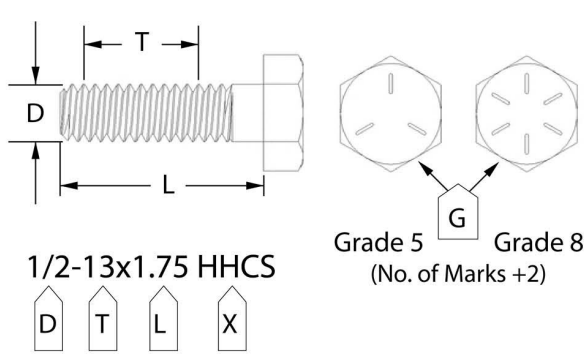


For Technical Support / Warranty Information please call 1-888-717-5797
Smittybilt, 1017 W 600 N STE 4, Ogden, UT 84404

Bolt Torque Specifications

Use this only as a guide for hardware without a called out torque specification in the instruction manual.

Bolt Torque and ID						
Decimal System			Metric System			
<i>All Torques in Ft. Lbs. Maximums</i>						
Bolt Size	Grade 5	Grade 8	Bolt Size	Class 9.8	Class 10.9	Class 12.9
5/16	15	20	M6	5	9	12
3/8	30	45	M8	18	23	27
7/16	45	60	M10	32	45	50
1/2	65	90	M12	55	75	90
9/16	95	130	M14	85	120	145
5/8	135	175	M16	130	165	210
3/4	185	280	M18	170	240	290



G= Grade (Bolt Strength)
 D= Nominal Diameter (Inches)
 T= Thread Count (Threads per Inch)
 L= Length (Inches)
 X= Description (Hex Head Cap Screw)

P= Property Class (Bolt Strength)
 D= Nominal Diameter (Millimeters)
 T= Thread Pitch (Thread Width, mm)
 L= Length (Millimeters)
 X= Description (Hex Head Cap Screw)



For Technical Support / Warranty Information please call 1-888-717-5797
 Smittybilt, 1017 W 600 N STE 4, Ogden, UT 84404

Notes and Disclaimers

Product cleaning and maintenance instructions

Stainless Steel Finish – Aluminum polish may be used to polish small scratches and scuffs on the finish. Mild soap, window or glass cleaner may be used to clean the finish. Dual state powder coat finish – Mild soap, window or glass cleaner may be used to clean the finish. In order to protect the finish, you may wax your product on a regular basis with pure carnauba automotive wax. Do not use any types of soap, polish or wax that contains abrasive that could damage the finish. Textured coated finishes should be cleaned with a mild soap on a damp sponge. Do not apply polish or wax that requires to be removed by means of buffing. This type of wax is commonly used at car wash facilities. Chrome Finish – Mild soap, window or glass cleaner may be used to clean the finish. In order to protect the finish, you should wax your product on a regular basis with pure carnauba automotive wax. Do not use any types of soap, polish or wax that contains abrasive that could damage the finish. Always check hardware after the first 500 miles after install. Check hardware periodically thereafter.

SMITTYBILT ADVANTAGE WARRANTY

LIMITED-LIFETIME WARRANTY FOR STRUCTURAL COMPONENTS

5-YEAR FINISH WARRANTY

Smittybilt Automotive Products, LLC (SAP) warrants to the original purchaser that (a) the physical components (e.g., metal components, welds, etc.) of any SAP **Adventure Series Rear Bumper** will be free of defects in material and workmanship for the lifetime of the product from the date of purchase of the bumper, and (b) the finish will be free of defects in material and workmanship for a period of 5-years from the original date of purchase. This warranty applies only to the original purchaser of the bumper and is non-transferable. To obtain any warranty service, you must provide SAP with a proof of purchase and date of purchase that is acceptable to SAP, such as a copy of your purchase receipt.

This warranty does not cover labor of part replacement of the bumper. SAP will, at its sole discretion, provide replacement part(s) for a defective bumper or component, provided this is done within the warranty period. To request assistance under warranty, one must call or email using the phone number or email at the bottom of this page. This warranty does not apply (1) wearable components; or (2) if the bumper has been damaged, including, but not limited to: abuse, misuse, collision, modification, misapplication, improper installation, or improper service. This warranty is void if any SAP serial number has been removed or defaced; or if the bumper is used for any commercial, industrial, or rental applications. This warranty only applies to bumpers bought, sold, and used within the United States or Canada unless otherwise specifically agreed in writing by SAP.

THE WARRANTY SET FORTH ABOVE IS THE ONLY WARRANTY. THERE ARE NO OTHER WARRANTIES, EXPRESSED OR IMPLIED, INCLUDING BUT NOT LIMITED TO IMPLIED WARRANTIES OF MERCHANTABILITY OR FITNESS FOR A PARTICULAR PURPOSE. ANY IMPLIED WARRANTY WHICH BY LAW MAY NOT BE EXCLUDED IS LIMITED TO A DURATION OF ONE (1) YEAR FROM THE DATE OF ORIGINAL RETAIL PURCHASE OF THE PRODUCT. No SAP dealer, agent, or employee is authorized to make any modification, extension or addition to this warranty. SAP SHALL NOT BE LIABLE FOR SPECIAL, INDIRECT, INCIDENTAL OR CONSEQUENTIAL DAMAGES (INCLUDING, BUT NOT LIMITED TO, LOST PROFITS, DOWN TIME OR LOSS OF USE) UNDER ANY LEGAL THEORY, EVEN IF SAP WAS ADVISED OF THE POSSIBILITY OF SUCH DAMAGES. Some states do not allow the exclusion of implied warranties or the exclusion or limitation of liability for incidental or consequential damages, or limitations on how long an implied warranty lasts, so the above limitation or exclusion may not apply to you. This Warranty gives you specific legal rights. You may also have other rights that vary from state to state. SAP reserves the right to change product design without notice. In situations in which SAP has changed a product design, SAP shall have no obligation to upgrade or otherwise modify previously manufactured products. For warranty inquiries contact SAP at:

Smittybilt Automotive Products, LLC

Customer Service Department

Call 1-800-776-0767 or Email info@smittybilt.com



For Technical Support / Warranty Information please call 1-888-717-5797
Smittybilt, 1017 W 600 N STE 4, Ogden, UT 84404