

Installation Instructions



2024+ Toyota Tacoma Rear Bumper Part #: S/B61458W



For Technical Support / Warranty Information please call **800-776-0767** or email info@smittybilt.com
1017 W 600 N, STE 4, Ogden, UT 84404

Introduction

Thank you for choosing Smittybilt accessories for your vehicle. If you would like to view our full range of available accessories, please visit us at www.smittybilt.com



Important Notes Before Starting

! IMPORTANT NOTE

Carefully read through this entire instruction manual thoroughly before attempting to install this part.

! WARNING

Serious injury can occur when working on vehicles alone.

When possible, work with another person to reduce risk of injury from strain or other dangers that can occur when working alone.

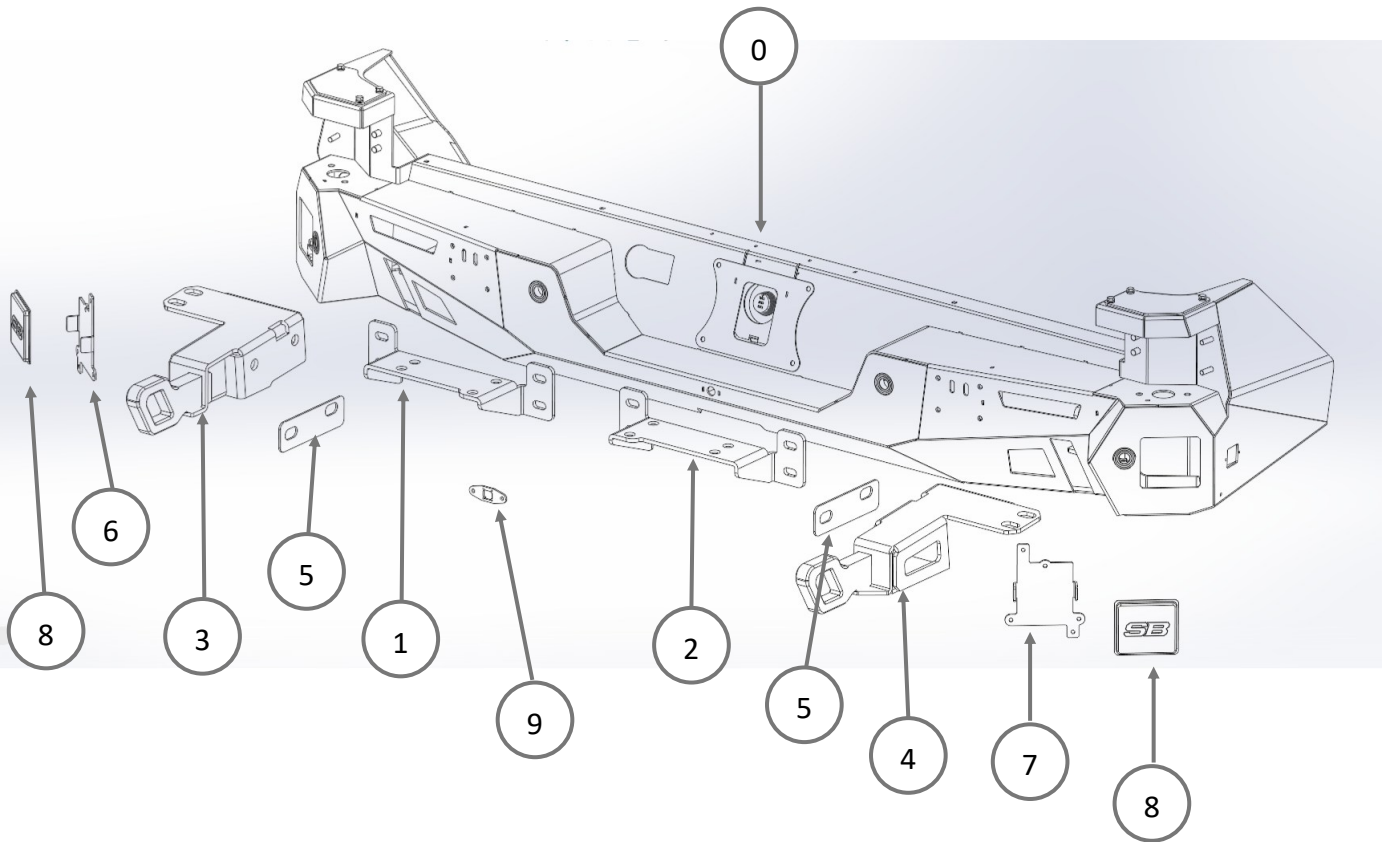
TOOLS REQUIRED

Socket Wrenches	Socket Set	Torx/Star Bit Socket Set
Wrench Set	Panel Pry Tools	Screw Drivers
Electrical/Wire Loom Harness Tape		



For Technical Support / Warranty Information please call **800-776-0767** or email info@smittybilt.com
1017 W 600 N, STE 4, Ogden, UT 84404

Box Contents



Item	Description	QTY
0	Smittybilt Rear Bumper	1
1	Bumper Mounting Bracket DS	1
2	Bumper Mounting Bracket PS	1
3	Recovery Point DS	1
4	Recovery Point PS	1
5	Recovery Point Shims	2
6	BLIS Sensor Mounting Bracket DS	1
7	BLIS Sensor Mounting Bracket PS	1

Item	Description	QTY
8	Plastic BLIS Sensor Covers	2
9	Backup Camera Mounting Bracket	1
10		
11		
12		
13		
14		
15		



For Technical Support / Warranty Information please call **800-776-0767** or email info@smittybilt.com
 1017 W 600 N, STE 4, Ogden, UT 84404

Hardware Packs

Description	QTY
Bumper Installation Hardware	
M6x1x20 HHCS GR10.9 CZ	6
M6x1x25 HHCS GR10.9 CZ	6
M6 LOCK WSHR CZ	12
M6 FLAT WSHR CZ	18
M6 CLIP NUT	4
M6x1 NUT CZ	6
M8x1.25x25 FTCS GR10.9 CZ	8
M12x1.75x35 HHCS GR10.9 CZ	8
M12 LOCK WASHER CZ	8
M12 FLAT WASHER CZ	8
M12 NUT PLATE	4
M16x2x40 HHCS GR10.9 CZ	4
M16x2x110 HHCS GR10.9 CZ	4
M16 LOCK WASHER CZ	8
M16 FLAT WASHER CZ	8
M16 NUT PLATE - NARROW	2
M16 NUT PLATE - WIDE	2
License Plate Hardware	
RUBBER BUMPER 1-1/32" OD 5/8" HEIGHT	2
M6X1 NYLOCK GR10.9 CZ	4
M6 FLAT WSHR CZ	8
M6X1X12 BHCS SS	2
M6X1X14 BHCS SS	2
M6X1X22 BHCS SS	2



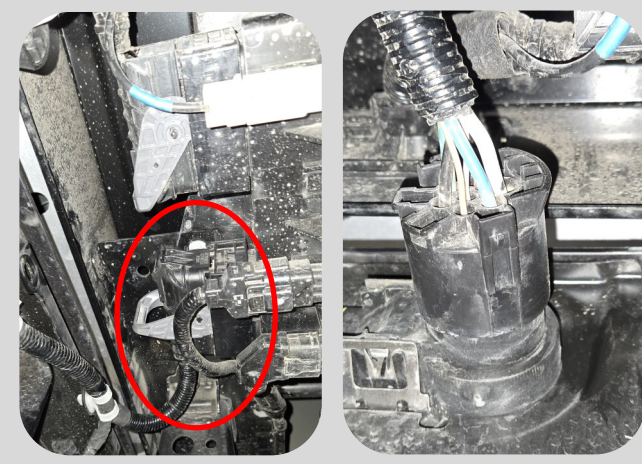
For Technical Support / Warranty Information please call **800-776-0767** or email info@smittybilt.com
 1017 W 600 N, STE 4, Ogden, UT 84404

OEM Bumper Removal

Step 1: Set-Up

Open the box containing your Smittybilt Adventure Series Rear Bumper and check all parts against the Bill of Materials outlined on the first few pages of these instructions. If anything is missing, contact Smittybilt factory technical support. Read all instructions before installation.

Park vehicle on a flat, level surface. Apply the parking brake and disconnect your battery. Place masking tape around the rear fenders and tailgate areas that can be scratched by removal and installation of the rear bumper. Remove your license plate from the OE rear bumper.



Step 2: Disconnect Wiring Harness

Locate and disconnect the two connectors for the rear bumper wiring harness in the center and driver side of the rear bumper.



Step 3: Unbolt OEM Bumper

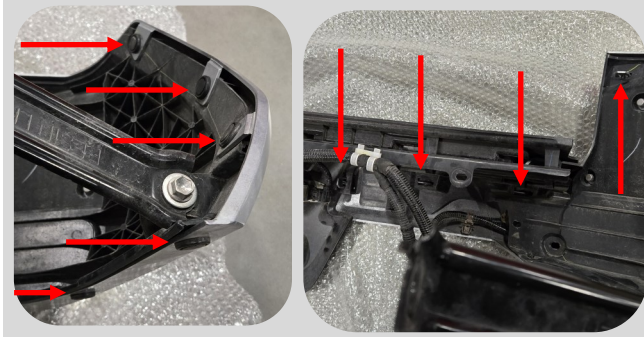
Remove the four plastic covers across the top of the bumper by carefully prying them up. Remove the six bolts (three per side) and the two nuts in the middle of the bumper that were under the plastic covers, along with the two bolts securing the corner bumper supports to the frame under the vehicle on either side of the bumper.

With the wiring harness unplugged and all bolts and nuts removed, carefully remove the bumper from the vehicle.



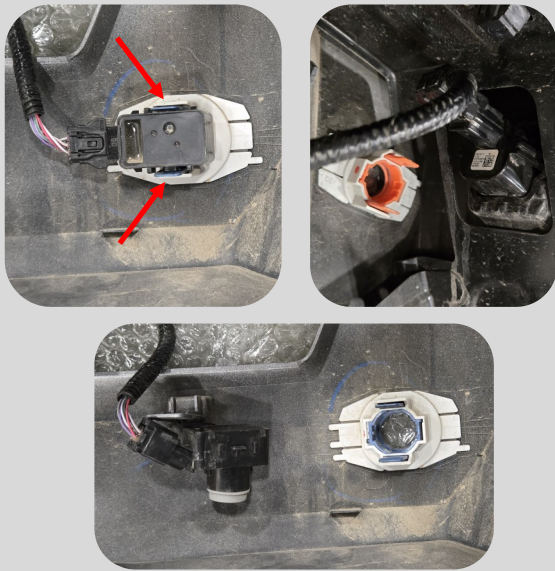
For Technical Support / Warranty Information please call **800-776-0767** or email info@smittybilt.com
1017 W 600 N, STE 4, Ogden, UT 84404

OEM Bumper Removal



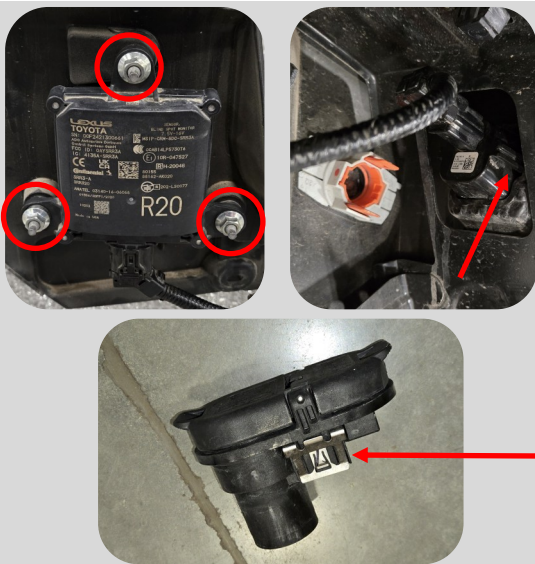
Step 4: Corner Panel Removal

Pull off the corner panel on both sides of the bumper by removing each of the five retaining clips and undoing all four retaining tab. Remove the other two parking sensors from the bumper using this method as well.



Step 5: Parking Sensor Removal

As you pull each corner panel away, remove the parking sensor in the panel by prying back the two tabs holding it in place and pulling or pushing the sensor out of its bezel. Remove the other two parking sensors from the bumper using this method as well.



Step 6: MISC Part Removal

Remove each blind spot (BLIS) sensor by unplugging them and removing the three nuts holding them in place.

Remove the license plate light by first unplugging it, then pushing in the tab on either side of the light and pushing the light out.

Last, remove the trailer plug by pushing in the metal tab on either side of the plug and pushing the plug out.



For Technical Support / Warranty Information please call **800-776-0767** or email info@smittybilt.com
1017 W 600 N, STE 4, Ogden, UT 84404

OEM Bumper Removal



Step 7: Bumper Wiring Harness Removal

Using plastic pry tools, pull out each retaining clip holding the wiring harness in place in the bumper, then remove the wiring harness from the bumper.

Backup Camera Removal

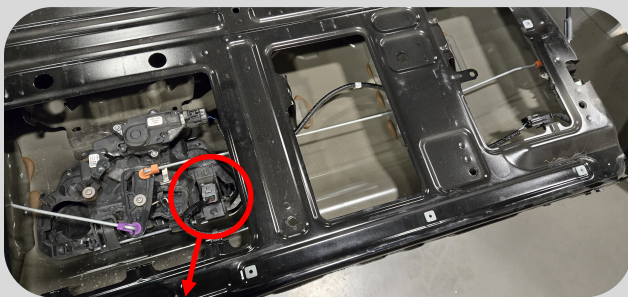


Step 8: Tailgate Panel and Trim Removal

If you are using swing gates with your bumper, the backup camera will need to be relocated as it will be blocked by the swing gates. The tailgate wiring harness will need to be modified as well.



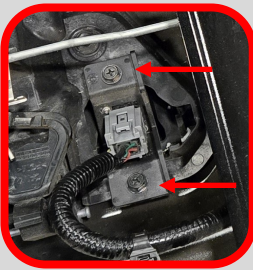
With the tail gate lowered, use a torx bit to remove each of the bolts securing the plastic panel and trim piece to the tailgate. Pop the trim piece off and then remove the plastic panel.



Step 9: Unplug Tailgate Harness

Unplug the camera and undo the two bolts securing it in place to remove it.

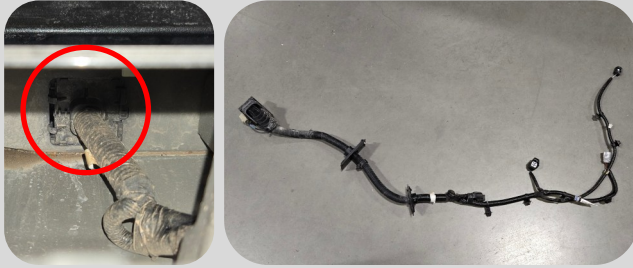
Unplug the rest of the harness inside the tailgate and separate each retaining clip holding it in place from the tailgate. Unplug the tailgate wiring harness and camera plug under the vehicle as well.



For Technical Support / Warranty Information please call **800-776-0767** or email info@smittybilt.com
1017 W 600 N, STE 4, Ogden, UT 84404

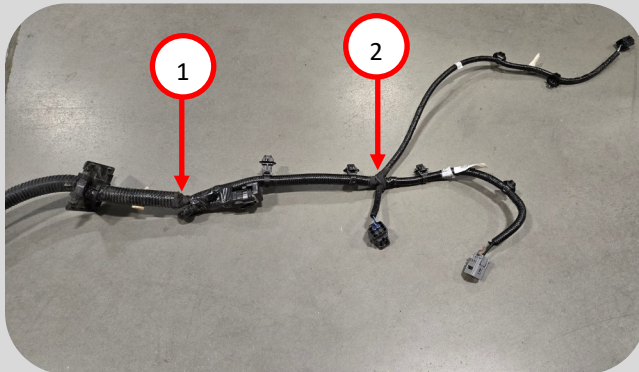
Backup Camera Removal

Step 10: Tailgate Wiring Harness Removal



Remove the panels in the tailgate and under the vehicle that the wiring harness passes through, then remove the tailgate wiring harness from the vehicle.

Step 11: Harness Modification



Remove the tape around the wiring sheath between the two points on the harness outlined in the picture and pull the plug and wires for the camera out of the sheath all the way back to point "1". Place the backup camera wires in a new sheath and tape the harness and sheathes back up.

Reinstall the tailgate wiring harness back into the vehicle as it was before, plugging everything in inside of the tailgate and under the vehicle, except now run the camera plug and wires out of the tailgate through the panel in the tailgate the rest of the harness runs through.

Step 12: Camera mounting modification



Separate the camera from its plastic mounting bracket by removing the two screws on the back. Use these screws to then mount the camera to the provided camera mounting bracket.

The plastic OEM bracket can be discarded or installed back in the OEM location. You can now reinstall the plastic cover and trim piece onto the tailgate.



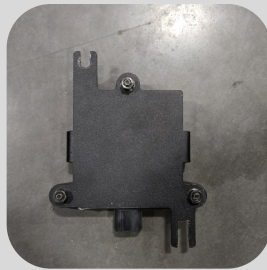
For Technical Support / Warranty Information please call **800-776-0767** or email info@smittybilt.com
1017 W 600 N, STE 4, Ogden, UT 84404

Smittybilt Bumper Preparation



NOTE:

If you are using lights or swing gates with your SB bumper, follow their respective instructions to install necessary components or remove other components on the bumper at this time.



Step 13: Mounting BLIS sensors

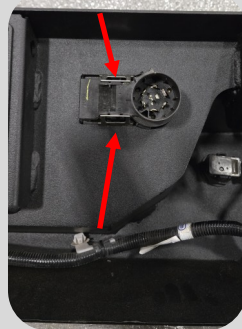
Bolt the two BLIS sensors to their mounting brackets using the provided M6 hardware, each using three 25mm bolts, six washers, three lock washers, and three nuts.



Step 14: Mounting BLIS Sensor cont.

Install the plastic blind spot sensor covers (one per side) into the bumper, making sure it's oriented correctly.

Insert the four M6 clip nuts (two per side) into the bumper.



Step 15: Mounting Misc. Parts

Install the license plate light into the bumper from the front side of the bumper.

Install the trailer plug into the bumper from the front side of the bumper, lightly prying up the metal tab on either side so they click into place.



For Technical Support / Warranty Information please call **800-776-0767** or email info@smittybilt.com
1017 W 600 N, STE 4, Ogden, UT 84404

Smittybilt Bumper Preparation

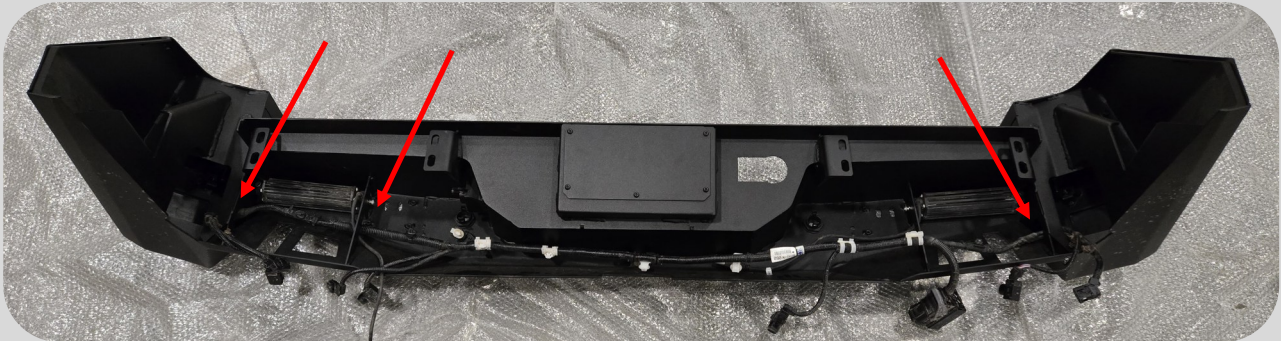


Step 16: Mounting the backup camera

If relocating the backup camera, mount it in the bumper now on the tabs in the center of the bumper using two 20mm M6 bolts, washers, and lock washers. Make sure the camera is oriented properly and isn't mounted into the bumper upside-down.

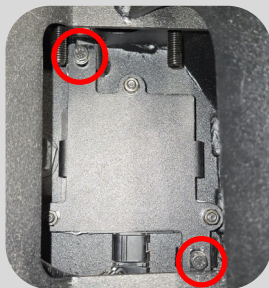
Step 17: Installing the wiring harness

Insert the wiring harness into the bumper, running it through the hole in each of the vertical supports on the left side of the bumper, and only the outer most hole on the right side. Your harness may have an extra plug that isn't meant for anything on your vehicle. Secure that loose plug to the wiring harness so it doesn't dangle. Plug in the license plate light as well.



Step 18: Mounting Parking Sensors

Insert the provided round foam pieces into each parking sensor bezel, then install each sensor into its bezel by pushing it in from the back and making sure the tab on either side of each sensor clicks into place.



Step 19: Mounting the BLIS Sensor

Plug each blind spot sensor in, making sure you have the correct mounting bracket for each side, and then install each sensor and mounting bracket into the bumper using two 20mm M6 bolts, washers, and lock washers per mounting bracket.



For Technical Support / Warranty Information please call **800-776-0767** or email info@smittybilt.com
1017 W 600 N, STE 4, Ogden, UT 84404

Smittybilt Bumper Installation



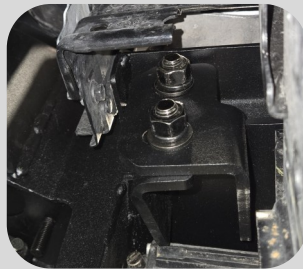
Passenger Side

Step 20: Bumper Mounting Brackets

Install the two bumper mounting brackets on the vehicle, using four of the provided M8 flat head bolts per bracket.

Step 21: Place Bumper On Vehicle

With help, pick the bumper up and carefully slide it into place on your vehicle. As you slide it into place, plug in the backup camera, and feed the bumper wiring harness plug under the bumper mounting bracket on the driver side of the vehicle.



Step 22: Loosely Mount the Bumper

Loosely secure the bumper to the mounting brackets on the vehicle using the provided M12 hardware, then center the bumper on the vehicle. Do not tighten this hardware completely.



For Technical Support / Warranty Information please call **800-776-0767** or email info@smittybilt.com
1017 W 600 N, STE 4, Ogden, UT 84404

Backup Camera Removal



Step 23: Install the Recovery Points

Install the recovery points on either side of the vehicle using the provided M16 hardware

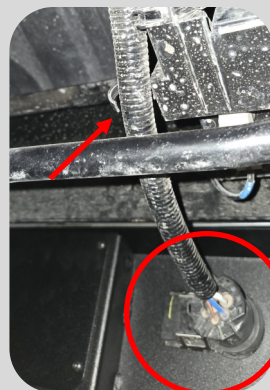
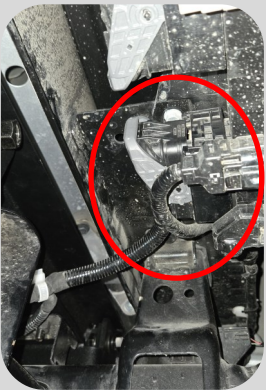
Place the shim between the recovery point and the vehicle frame. Use the two longer bolts and wider nut plates to secure each recovery point to the frame of the vehicle,

Use the two shorter bolts and narrower nut plates to secure each recovery point to the bumper.

Don't tighten hardware completely.

Step 17: Final Adjustments

After making any final adjustments and centering the bumper on your vehicle, tighten all to the specifications at the end of these instructions. You can also install your license plate at this time using the provided license plate hardware.



Step 18: Plug in Bumper Wiring Harness

Plug in bumper wiring harness and trailer plug harness now. Some retaining clips may need to be separated from the vehicle (see arrow in picture) to allow the trailer plug harness to reach the plug on the bumper. Secure the wiring harness in place inside the bumper with zip ties.



For Technical Support / Warranty Information please call **800-776-0767** or email info@smittybilt.com
1017 W 600 N, STE 4, Ogden, UT 84404

Installation Complete

Congratulations! Your install is now complete.

Enjoy your new Smittybilt Rear Bumper



NOTE:

If you are using swing gates with your bumper, follow the swing gate instructions to finish installing them now.

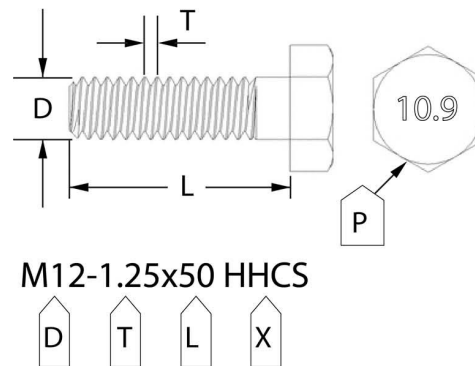
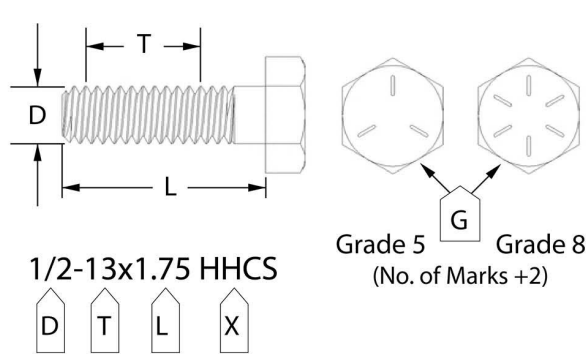


For Technical Support / Warranty Information please call **800-776-0767** or email info@smittybilt.com
1017 W 600 N, STE 4, Ogden, UT 84404

Bolt Torque Specifications

Use this only as a guide for hardware without a called out torque specification in the instruction manual.

Bolt Torque and ID						
Decimal System			Metric System			
<i>All Torques in Ft. Lbs. Maximums</i>						
Bolt Size	Grade 5	Grade 8	Bolt Size	Class 9.8	Class 10.9	Class 12.9
5/16	15	20	M6	5	9	12
3/8	30	45	M8	18	23	27
7/16	45	60	M10	32	45	50
1/2	65	90	M12	55	75	90
9/16	95	130	M14	85	120	145
5/8	135	175	M16	130	165	210
3/4	185	280	M18	170	240	290



G= Grade (Bolt Strength)
 D= Nominal Diameter (Inches)
 T= Thread Count (Threads per Inch)
 L= Length (Inches)
 X= Description (Hex Head Cap Screw)

P= Property Class (Bolt Strength)
 D= Nominal Diameter (Millimeters)
 T= Thread Pitch (Thread Width, mm)
 L= Length (Millimeters)
 X= Description (Hex Head Cap Screw)



For Technical Support / Warranty Information please call **800-776-0767** or email info@smittybilt.com
 1017 W 600 N, STE 4, Ogden, UT 84404

Notes and Disclaimers

Product cleaning and maintenance instructions

Stainless Steel Finish – Aluminum polish may be used to polish small scratches and scuffs on the finish. Mild soap, window or glass cleaner may be used to clean the finish. Dual state powder coat finish – Mild soap, window or glass cleaner may be used to clean the finish. In order to protect the finish, you may wax your product on a regular basis with pure carnauba automotive wax. Do not use any types of soap, polish or wax that contains abrasive that could damage the finish. Textured coated finishes should be cleaned with a mild soap on a damp sponge. Do not apply polish or wax that requires to be removed by means of buffing. This type of wax is commonly used at car wash facilities. Chrome Finish – Mild soap, window or glass cleaner may be used to clean the finish. In order to protect the finish, you should wax your product on a regular basis with pure carnauba automotive wax. Do not use any types of soap, polish or wax that contains abrasive that could damage the finish.

SMITTYBILT ADVANTAGE WARRANTY

LIMITED-LIFETIME WARRANTY FOR STRUCTURAL COMPONENTS

5-YEAR FINISH WARRANTY

Smittybilt Automotive Products, LLC (SAP) warrants to the original purchaser that (a) the physical components (e.g., metal components, welds, etc.) of any SAP 2024+ *Toyota Tacoma Rear Bumper* will be free of defects in material and workmanship for the lifetime of the product from the date of purchase of the 2024+ *Toyota Tacoma Rear Bumper*, and (b) the finish will be free of defects in material and workmanship for a period of 5-years from the original date of purchase. This warranty applies only to the original purchaser of the 2024+ *Toyota Tacoma Rear Bumper* and is non-transferable. To obtain any warranty service, you must provide SAP with a proof of purchase and date of purchase that is acceptable to SAP, such as a copy of your purchase receipt.

This warranty does not cover labor of part replacement of the 2024+ *Toyota Tacoma Rear Bumper*. SAP will, at its sole discretion, provide replacement part(s) for a defective 2024+ *Toyota Tacoma Rear Bumper* or component, provided this is done within the warranty period. To request assistance under warranty, one must call or email using the phone number or email at the bottom of this page. This warranty does not apply (1) wearable components; or (2) if the 2024+ *Toyota Tacoma Rear Bumper* has been damaged, including, but not limited to: abuse, misuse, collision, modification, misapplication, improper installation, or improper service. This warranty is void if any SAP serial number has been removed or defaced; or if the 2024+ *Toyota Tacoma Rear Bumper* is used for any commercial, industrial, or rental applications. This warranty only applies to 2024+ *Toyota Tacoma Rear Bumper* bought, sold, and used within the United States or Canada unless otherwise specifically agreed in writing by SAP.

THE WARRANTY SET FORTH ABOVE IS THE ONLY WARRANTY. THERE ARE NO OTHER WARRANTIES, EXPRESSED OR IMPLIED, INCLUDING BUT NOT LIMITED TO IMPLIED WARRANTIES OF MERCHANT ABILITY OR FITNESS FOR A PARTICULAR PURPOSE. ANY IMPLIED WARRANTY WHICH BY LAW MAY NOT BE EXCLUDED IS LIMITED TO A DURATION OF ONE (1) YEAR FROM THE DATE OF ORIGINAL RETAIL PURCHASE OF THE PRODUCT. No SAP dealer, agent, or employee is authorized to make any modification, extension or addition to this warranty. SAP SHALL NOT BE LIABLE FOR SPECIAL, INDIRECT, INCIDENTAL OR CONSEQUENTIAL DAMAGES (INCLUDING, BUT NOT LIMITED TO, LOST PROFITS, DOWN TIME OR LOSS OF USE) UNDER ANY LEGAL THEORY, EVEN IF SAP WAS ADVISED OF THE POSSIBILITY OF SUCH DAMAGES. Some states do not allow the exclusion of implied warranties or the exclusion or limitation of liability for incidental or consequential damages, or limitations on how long an implied warranty lasts, so the above limitation or exclusion may not apply to you. This Warranty gives you specific legal rights. You may also have other rights that vary from state to state. SAP reserves the right to change product design without notice. In situations in which SAP has changed a product design, SAP shall have no obligation to upgrade or otherwise modify previously manufactured products. For warranty inquiries contact SAP at:

Smittybilt Automotive Products, LLC

Customer Service Department

Call 1-800-776-0767 or Email info@smittybilt.com



WARNING: Cancer and Reproductive Harm
www.P65Warnings.ca.gov



For Technical Support / Warranty Information please call **800-776-0767** or email info@smittybilt.com
1017 W 600 N, STE 4, Ogden, UT 84404