

Installation Instructions



JL HD Pivot Tire Carrier Part # S/B7743



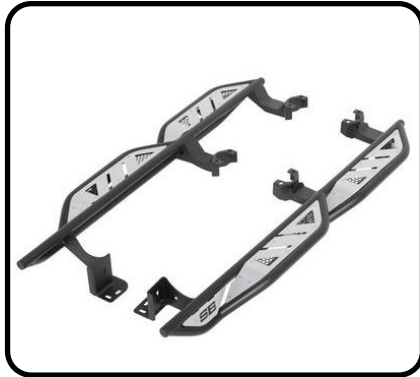
For Technical Support / Warranty Information please call 1-800-776-0767
Smittybilt, 400 W Artesia, Compton, CA 90220

Introduction

Thank you for choosing Smittybilt accessories for your Jeep Wrangler®. If you would like to view our full range of available accessories, please visit us at www.smittybilt.com



XRC Gen 2 Rear Bumper



Apollo Rock Sliders with Steps



JL Neoprene Seat Covers

Jeep® & Wrangler® are registered trademarks of Stellantis N.V.

Important Notes Before Starting

IMPORTANT NOTE

Carefully read through this entire instruction manual thoroughly before attempting to install this part.

WARNING

Serious injury can occur when working on vehicles alone.

When possible, work with another person to reduce risk of injury from strain or other dangers that can occur when working alone.

The following tools will be required to complete the installation of this part:

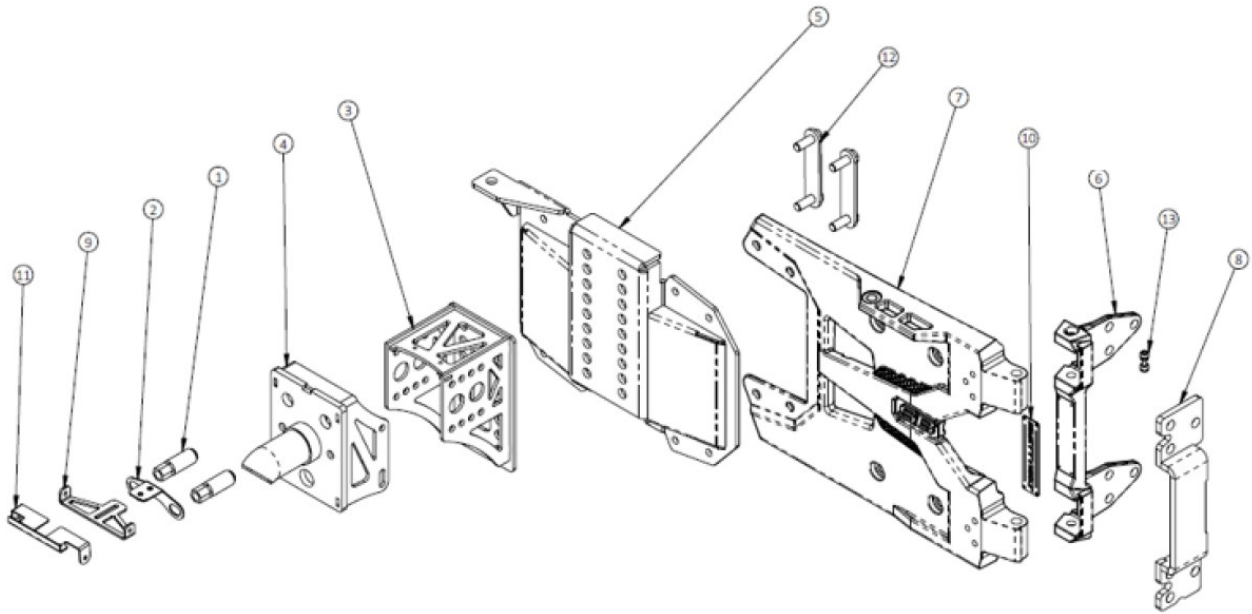
TOOLS REQUIRED

Plastic Pry Tool (2x)	3/8" Ratchet	13mm Socket
10mm Socket	T55 Torx Bit	Drill (90°)
0.20" Drill Bit (Short)	Masking Tape	Torque Wrench



For Technical Support / Warranty Information please call 1-800-776-0767
Smittybilt, 400 W Artesia, Compton, CA 90220

Box Contents & Technical Information



ID	Part Description	QTY
1	401TU007 - 14mm Wheel Lug	2
2	401TU008 - Brake Light Threaded Base	1
3	401TU033 - Stationary Wheel Bracket	1
4	401TU034 - Adjustable Wheel Bracket	1
5	401TU052 - Tire Carrier Mount	1
6	401TU053 - Cast HD Pivot Hinge	1
7	401TU054 - Cast HD Reinforcement Plate	1
8	401TU055 - Reinforcement Bracket	1
9	401TU056 - Brake Light Adjustable Base	1
10	401TU059 - Logo Plate (Installed)	1
11	401TU074 - Brake Light Bracket	1
12	401TU078 - M12 Bolt Plate	2
13	401TU058 - Limit Arm Bumper	1
	401TU075 - Light Mount Clip	2
	90-7743-01- M10 Hardware Pack:	1
	M10-1.5x55MM Hex Bolt (10.9)	4
	M10 Flat Washer	4

Part Description	QTY
90-7743-02 - Hardware Pack:	1
M8-1.25X35MM Hex Bolt (10.9)	8
M8 Flat Washer	8
90-7743-03 Hardware Pack:	1
M10-1.25x30mm Hex Bolt (10.9)	4
M10 Flat Washer	8
M10 Nylock Nut	4
M12 Flat Washer	4
M12-1.75 Nylock Nut	4
90-7743-04 - Hardware Pack:	1
M6-1.0x14MM Button Head Bolt	2
M6-1.0x18MM Button Head Bolt	2
M6 Flat Washer	6
M6-1.0 Nylock Nut (10.9)	2
M14-1.5x16MM Hex Bolt	2
M14 Flat Washer	2
90-7743-06 - Hardware Pack:	4
M8-1.25 Spinning Washer Nut (10.9)	6



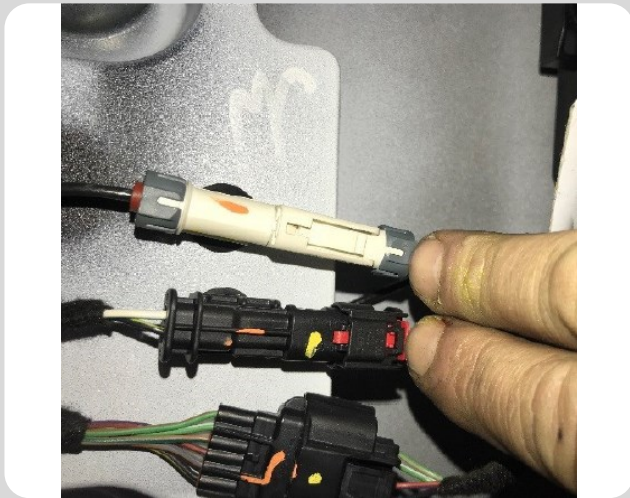
For Technical Support / Warranty Information please call 1-800-776-0767
Smittybilt, 400 W Artesia, Compton, CA 90220

Installation Instructions: HD Pivot Installation



Step 1:

With your spare tire removed. Open the tailgate, begin prying off the rear plastic interior panel starting at the latch side. For best results, use a plastic pry tool to prevent scratches. Once removed, set aside, this piece will be reinstalled later.



Step 2:

Once the panel is removed, carefully disconnect the brake light (black connector in middle) connector by pulling the red locking tab outwards and then squeezing the retaining tab while pulling the two halves of the connector apart. The camera wiring harness (white connector on top) does not have a locking tab and is disconnected the same way.



Step 3:

From the outside of the tailgate, gently remove the wiring grommet. Then feed the disconnected wiring harness through the hole on the tailgate. Use a trim tool to gently pry the grommet if needed.

Note: Remove wiring harness completely from the OE tailgate through the exterior hole. Failure to do so may result in damage to the harness.



For Technical Support / Warranty Information please call 1-800-776-0767
Smittybilt, 400 W Artesia, Compton, CA 90220

Installation Instructions: HD Pivot Installation



Step 4:

Use a **13mm Socket** to remove the eight (8) OE **M8 bolts** holding the tire carrier to the tailgate.



Step 5:

Remove the two (2) rubber anti-rattle bumpers from the tailgate by pulling the peg on the inside of the tailgate (shown in photo) whilst pulling and twisting on the outside.



Step 6:

Insert the push in hole plugs (**7721-02**) into the anti-rattle holes. The plug will snap into place with the outer edge flush to the door when installed properly.



For Technical Support / Warranty Information please call 1-800-776-0767
Smittybilt, 400 W Artesia, Compton, CA 90220

Installation Instructions: HD Pivot Installation



Step 7:

Use a **T40 torx** to remove the three (3) OE screws from the lower trim piece.



Step 8:

Remove the passenger side rear quarter panel by removing the screw from the forward part of the plastic.

Then, pry the seatbelt escutcheon.

If applicable, unplug the wire harness, then remove the complete corner panel.



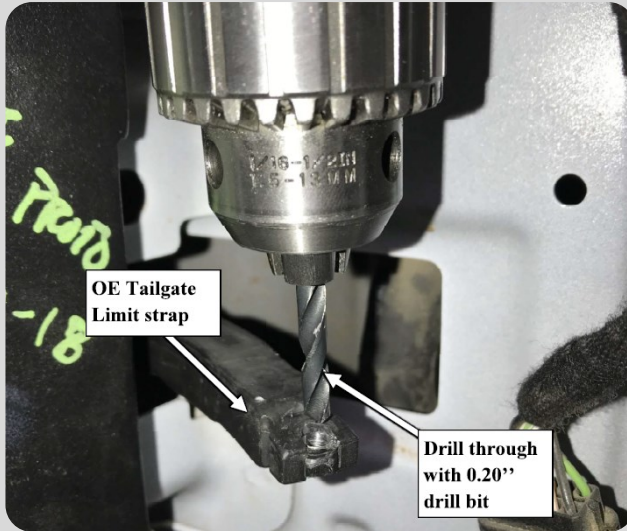
Step 9:

With a **10mm Socket**, remove the bolt securing the passenger tail light. Disconnect the taillight by pulling out the red tab and pressing the black tab. Then pull the connector apart.



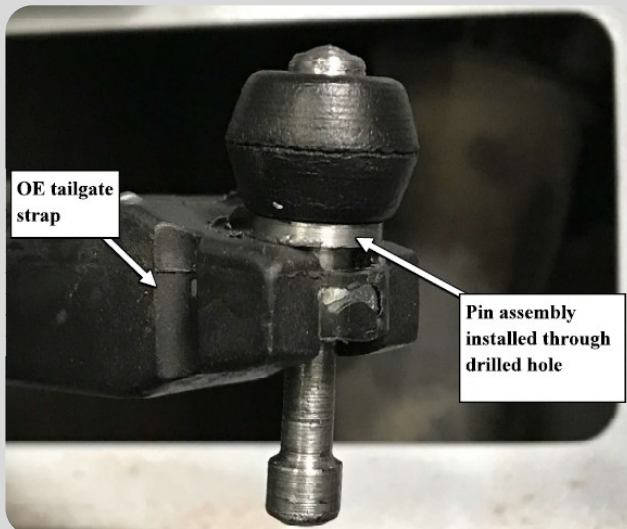
For Technical Support / Warranty Information please call 1-800-776-0767
Smittybilt, 400 W Artesia, Compton, CA 90220

Installation Instructions: HD Pivot Installation



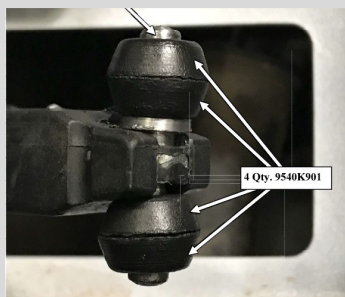
Step 10:

Looking inside the tail light hole, you will see the backside of the OE tailgate limit strap. Notice the small horseshoe shaped area of bare metal at the very end. With a **90° drill** and a **short 0.20" drill bit**, drill through the center of the semi-circle area as shown.



Step 11:

Remove the bottom rubber cones from the **401TU058** then install into the **OE** limit strap as shown.



Step 12:

Reinstall the bottom rubber cones.

Step 13:

Remove the sticker covering the hinge bolts.



For Technical Support / Warranty Information please call 1-800-776-0767
Smittybilt, 400 W Artesia, Compton, CA 90220

Installation Instructions: HD Pivot Installation



Step 14:

Close the tailgate and make sure it is completely latched. Place a small piece of wood or something similar underneath the tailgate to prevent it from sagging. This will help keep proper alignment.

Step 15:

With a **13mm socket**, remove the three (3) bolts off each hinge.



Step 16:

With a **T55 Torx Tool**, remove the four (4) bolts securing the hinge to the tailgate.



Step 17:

Locate the two included shims. For an easier installation, add a small piece of masking tape between the two holes of the shim.



For Technical Support / Warranty Information please call 1-800-776-0767
Smittybilt, 400 W Artesia, Compton, CA 90220

Installation Instructions: HD Pivot Installation



Step 18:

Stick the top shim to the tailgate. Make sure the 'key' feature is on the upper right corner and aligned to the edge of the tailgate.



Step 19:

Stick the bottom shim to the tailgate. Make sure the 'key' feature is on the lower right corner and aligned to the end of the tailgate.



Step 20:

Install the HD Pivot carrier assembly by aligning the carrier with the OE bolt holes. Secure using the included **M10-1.5x55mm bolts** and **M10 washers**.



For Technical Support / Warranty Information please call 1-800-776-0767
Smittybilt, 400 W Artesia, Compton, CA 90220

Installation Instructions: HD Pivot Installation



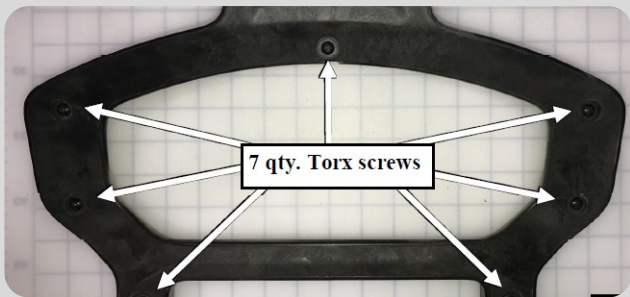
Step 21:

On the inside of the quarter panel, secure the hinge pivot ears to reusing the **OE bolts** previously removed. Torque to **23-ftlbs**.



Step 22:

Insert the reinforcement bracket in the passenger side tail light hole. Then use the **6 OE hinge bolts** and supplied **(6) M8 spinning washer nuts** to secure.



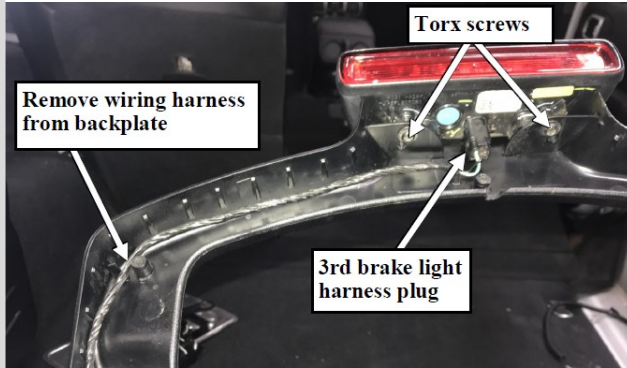
Step 23:

Place the OE tire carrier face-up on a clean workspace. Then, use a torx bit to remove the **(7) OE screws** securing the backplate to the 3rd brake light frame.



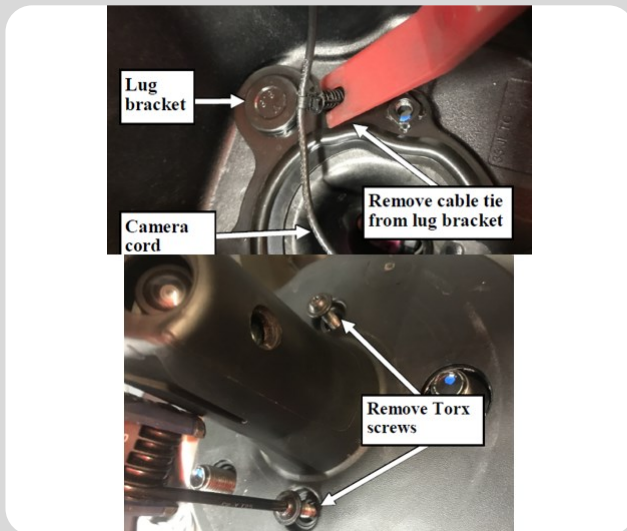
For Technical Support / Warranty Information please call 1-800-776-0767
Smittybilt, 400 W Artesia, Compton, CA 90220

Installation Instructions: HD Pivot Installation



Step 24:

Remove the (2) torx screws securing the 3rd brake light to the frame. Then, carefully unplug the harness from the 3rd brake light and remove the harness completely from the backplate. Set the OE 3rd brake light aside for reinstallation later.



Step 25:

Turn the OE tire carrier over and carefully remove the camera cord push clip from the lug bracket. Then turn the carrier right-side up and remove the (2) torx screws on either side of the camera cone that secure the lug bracket. Save these screws for reinstallation. Then, push the lug bracket out of the carrier. Be careful not to damage the camera cord.



Step 26:

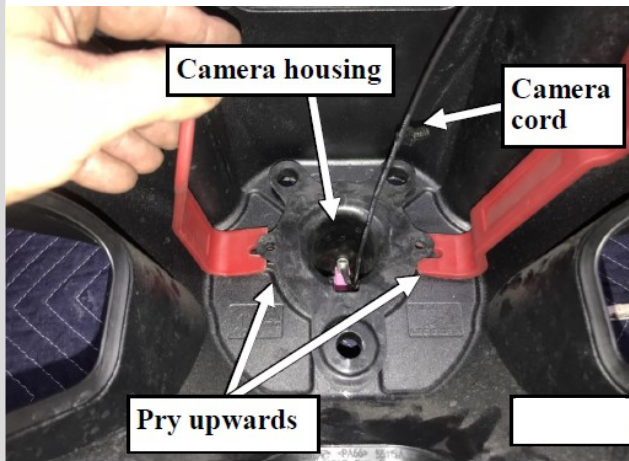
With the tire carrier laying flat on a clean work surface, use a heat gun in a slow circular motion to heat up the lower half of the camera cone.

Do NOT apply heat near the camera or its lens! After about 3 minutes of applying heat, check the base of the camera cone. It should be uncomfortable to touch for more than 5 seconds. If not, repeat this step.



For Technical Support / Warranty Information please call 1-800-776-0767
Smittybilt, 400 W Artesia, Compton, CA 90220

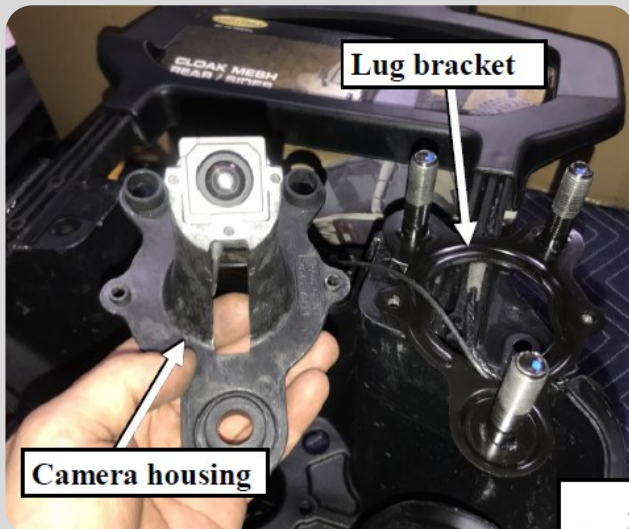
Installation Instructions: HD Pivot Installation



Step 27:

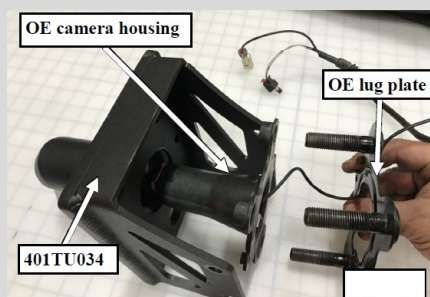
While still hot from the heat gun, turn the carrier over, then use (2) small plastic pry tools on opposing sides of the camera housing flange to pry it out of the carrier. Apply even pressure and be cautious to not pinch the camera cord. If the camera housing does not come out within 30 or so seconds, repeat step 26. Only use moderate force on the camera housing.

Note: Be cautious when working with hot surfaces.



Step 28:

Once the camera housing is loose, carefully remove the lug bracket, camera housing, and wiring harness from the OE tire carrier.



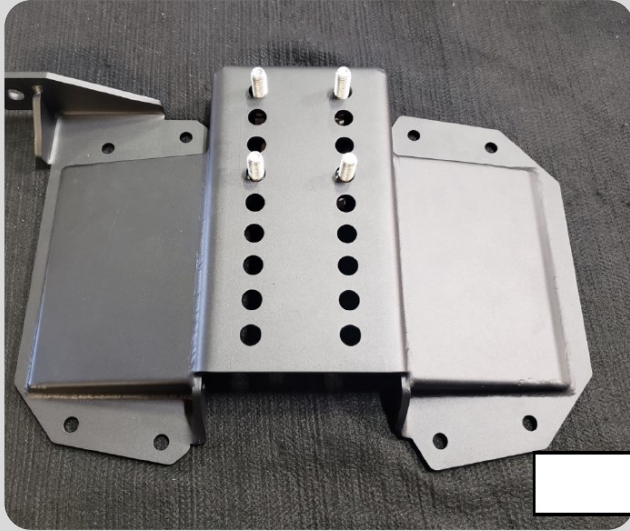
Step 29:

Locate the **Adjustable Wheel Mount Bracket (401TU034)** and carefully install the OE camera housing and lug plate into it using the (2) OE screws. Then tighten to **8ft-lbs**. Set this bracket aside for installation later.



For Technical Support / Warranty Information please call 1-800-776-0767
Smittybilt, 400 W Artesia, Compton, CA 90220

Installation Instructions: HD Pivot Installation



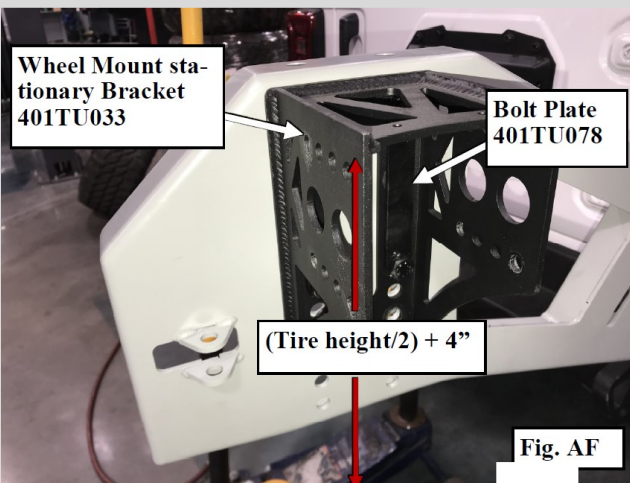
Step 30:

Install the (2) included **M12 Bolt Plates** to the tire carrier mount.



Step 31:

Install the tire carrier mount to the tailgate using the **OE Hardware** previously removed.



Step 32:

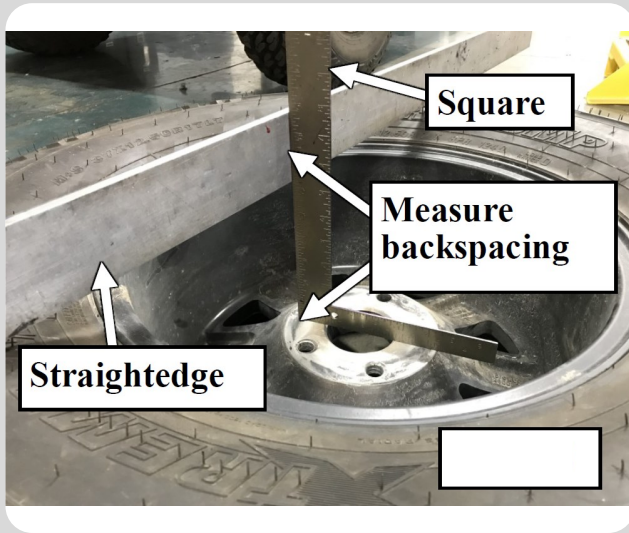
Locate the **Stationary Wheel Mount Bracket (401TU033)**, **Bolt Plate (401TU078)**, and **Hardware Pack (7743-03)**. Use the (2) **M12 Bolt Plates**, **M12 Nuts**, and **M12 Washers** from the hardware pack to mount the stationary bracket to the tire carrier. Torque this hardware to 55ft-lbs.

To figure out a good initial mounting height for your spare tire, use this formula; (tire height/2) + 4". For a 37" tire this would be 22.5". This will be the distance from the deck of the bumper to the top of the stationary bracket.



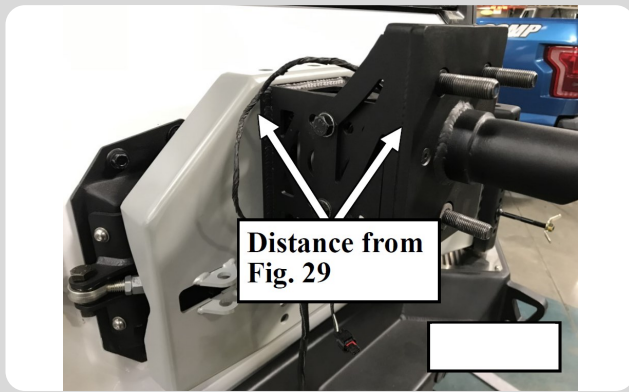
For Technical Support / Warranty Information please call 1-800-776-0767
Smittybilt, 400 W Artesia, Compton, CA 90220

Installation Instructions: HD Pivot Installation



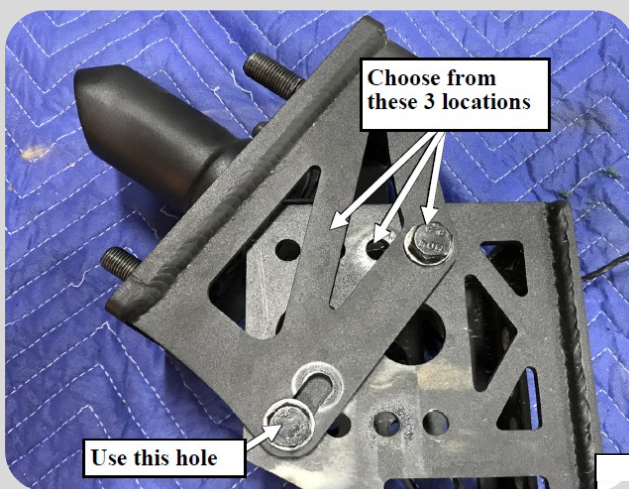
Step 33:

Place your spare tire face down on the floor. Use a straight edge and a small square to measure the backspacing.



Step 34:

Install the previously assembled **Adjustable Tire Mount** from Step 29 onto the **Stationary Bracket**. Position the Bracket so that the distance from the face of the Tire carrier mount, to the face of the Adjustable Tire Mount is equal to, or slightly longer than the measurement from Step 33. Secure using the remaining **M10 hardware** from **Hardware Pack (7743-03)**. Torque M10 hardware to **30ft-lbs**.



Step 35:

The adjustable mount can also be adjusted for **(3)** different angle configurations. With the lower bolt in the outermost hole, choose the angle that matches your needs.

Step 36:

On the inside of the tailgate, reconnect the OE camera and 3rd brake light harnesses. If also installing a Smittybilt bumper with a license plate relocation bracket, also run this harness alongside the OE harnesses. Secure with cable ties as needed.



For Technical Support / Warranty Information please call 1-800-776-0767
Smittybilt, 400 W Artesia, Compton, CA 90220

Installation Instructions: HD Pivot Installation



Step 37:

Attach the extended lug nuts to the top two lugs securing the tire to the tire mount. Then attach the threaded base plate onto the extended lug nuts, using the **M14 Bolts** and **M14 Flat Washers**.



Step 38:

Attach the adjustable base using the short **M6 Bolts** and **Flat Washers**. The holes are slotted so you can adjust the base so that it clears the wheel.



Step 39:

Install the 3rd brake light mount to the adjustable base using the long **M6 Bolts**, **Flat Washers**, and **M6 Nuts**. Leave the hardware loose and fold the mount up. Attach the factory 3rd brake light using the factory screws removed earlier. Then, level the 3rd brake light. Once the level is acceptable tighten the hardware and reconnect the factory harness.

Installation is now complete.

Be sure to retorque all hardware after 500 miles.

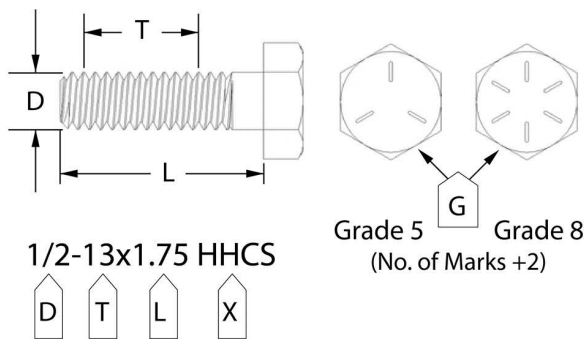


For Technical Support / Warranty Information please call 1-800-776-0767
Smittybilt, 400 W Artesia, Compton, CA 90220

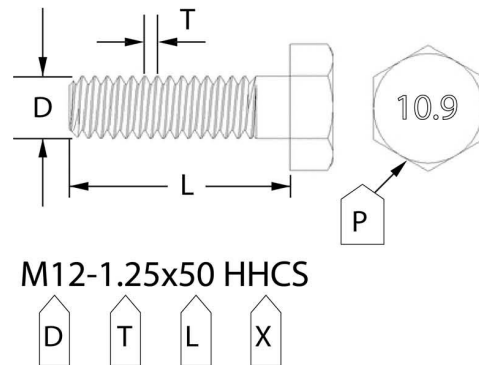
Bolt Torque Specifications

Use this only as a guide for hardware without a called out torque specification in the instruction manual.

Bolt Torque and ID						
Decimal System			Metric System			
<i>All Torques in Ft. Lbs. Maximums</i>						
Bolt Size	Grade 5	Grade 8	Bolt Size	Class 9.8	Class 10.9	Class 12.9
5/16	15	20	M6	5	9	12
3/8	30	45	M8	18	23	27
7/16	45	60	M10	32	45	50
1/2	65	90	M12	55	75	90
9/16	95	130	M14	85	120	145
5/8	135	175	M16	130	165	210
3/4	185	280	M18	170	240	290



G= Grade (Bolt Strength)
 D= Nominal Diameter (Inches)
 T= Thread Count (Threads per Inch)
 L= Length (Inches)
 X= Description (Hex Head Cap Screw)



P= Property Class (Bolt Strength)
 D= Nominal Diameter (Millimeters)
 T= Thread Pitch (Thread Width, mm)
 L= Length (Millimeters)
 X= Description (Hex Head Cap Screw)



For Technical Support / Warranty Information please call 1-800-776-0767
 Smittybilt, 400 W Artesia, Compton, CA 90220

Notes and Disclaimers

Product cleaning and maintenance instructions

Stainless Steel Finish – Aluminum polish may be used to polish small scratches and scuffs on the finish. Mild soap, window or glass cleaner may be used to clean the finish. Dual state powder coat finish – Mild soap, window or glass cleaner may be used to clean the finish. In order to protect the finish, you may wax your product on a regular basis with pure carnauba automotive wax. Do not use any types of soap, polish or was that contains abrasive that could damage the finish. Textured coated finishes should be cleaned with a mild soap on a damp sponge. Do not apply polish or was that requires to be removed by means of buffing. This type of wax is commonly used at car wash facilities. Chrome Finish – Mild soap, window or glass cleaner may be used to clean the finish. In order to protect the finish, you should wax your product on a regular basis with pure carnauba automotive wax. Do not use any types of soap, polish or was that contains abrasive that could damage the finish.

SMITTYBILT ADVANTAGE WARRANTY

LIMITED-LIFETIME WARRANTY FOR STRUCTURAL COMPONENTS

5-YEAR FINISH WARRANTY

Smittybilt Automotive Products, LLC (SAP) warrants to the original purchaser that (a) the physical components (e.g., metal components, welds, etc.) of any SAP **JL HD Pivot Tire Carrier** will be free of defects in material and workmanship for the lifetime of the product from the date of purchase of the tire carrier, and (b) the finish will be free of defects in material and workmanship for a period of 5-years from the original date of purchase. This warranty applies only to the original purchaser of the tire carrier and is non-transferable. To obtain any warranty service, you must provide SAP with a proof of purchase and date of purchase that is acceptable to SAP, such as a copy of your purchase receipt.

This warranty does not cover labor of part replacement of the tire carrier. SAP will, at its sole discretion, provide replacement part(s) for a defective carrier or component, provided this is done within the warranty period. To request assistance under warranty, one must call or email using the phone number or email at the bottom of this page. This warranty does not apply (1) wear-able components; or (2) if the tire carrier has been damaged, including, but not limited to: abuse, misuse, collision, modification, misapplication, improper installation, or improper service. This warranty is void if any SAP serial number has been removed or defaced; or if the carrier is used for any commercial, industrial, or rental applications. This warranty only applies to tire carriers bought, sold, and used within the Untied States or Canada unless otherwise specifically agreed in writing by SAP.

THE WARRANTY SET FOURTH ABOVE IS THE ONLY WARRANTY. THERE ARE NO OTHER WARRANTIES, EXPRESSED OR IMPLIED, INCLUDING BUT NOT LIMITED TO IMPLIED WARRANTIES OF MERCHANT ABILITY OR FITNESS FOR A PARTICULAR PURPOSE. ANY IMPLIED WARRANTY WHICH BY LAW MAY NOT BE EXCLUDED IS LIMITED TO A DURATION OF ONE (1) YEAR FROM THE DATE OF ORIGINAL RETAIL PURCHASE OF THE PRODUCT. No SAP dealer, agent, or employee is authorized to make any modification, extension or addition to this warranty. SAP SHALL NOT BE LIABLE FOR SPECIAL, INDIRECT, INCIDENTAL OR CONSEQUENTIAL DAMAGES (INCLUDING, BUT NOT LIMITED TO, LOST PROFITS, DOWN TIME OR LOSS OF USE) UNDER ANY LEGAL THEORY, EVEN IF SAP WAS ADVISED OF THE POSSIBILITY OF SUCH DAMAGES. Some states do not allow the exclusion of implied warranties or the exclusion or limitation of liability for incidental or consequential damages, or limitations on how long an implied warranty lasts, so the above limitation or exclusion may not apply to you. This Warranty gives you specific legal rights. You may also have other rights that vary from state to state. SAP reserves the right to change product design without notice. In situations in which SAP has changed a product design, SAP shall have no obligation to upgrade or otherwise modify previously manufactured products. For warranty inquires contact SAP at:

Smittybilt Automotive Products, LLC

Customer Service Department

Call 1-800-776-0767 or Email info@smittybilt.com



WARNING: Cancer and Reproductive Harm
www.P65Warnings.ca.gov



For Technical Support / Warranty Information please call 1-800-776-0767
Smittybilt, 400 W Artesia, Compton, CA 90220