

# Installation Instructions



## JLU Square Back Top Kit Part # S/B9093135K



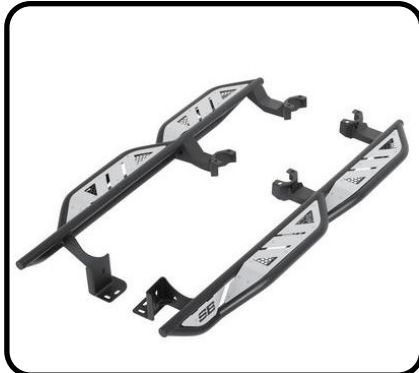
For Technical Support / Warranty Information please call 1-888-717-5797  
Smittybilt, 1017 W 600 N, STE 4, Ogden, UT 84404

## Introduction

Thank you for choosing Smittybilt accessories for your Jeep Wrangler®. If you would like to view our full range of available accessories, please visit us at [www.smittybilt.com](http://www.smittybilt.com)



XRC Gen 2 Rear Bumper



Apollo Rock Sliders with Steps



Spare Tire Trash/Storage Bag

Jeep® & Wrangler® are registered trademarks of Stellantis N.V.

## Important Notes Before Starting



### IMPORTANT NOTE

Carefully read through this entire instruction manual thoroughly before attempting to install this part.



### WARNING

Serious injury can occur when working on vehicles alone.

When possible, work with another person to reduce risk of injury from strain or other dangers that can occur when working alone.



### IMPORTANT NOTE

For best results, install the top in temperatures above 72°F, as cooler temps can cause the fabric to shrink slightly. If needed, warm it up indoors or in direct sunlight for 1–2 hours before installation.

### TOOLS REQUIRED

Safety Glasses

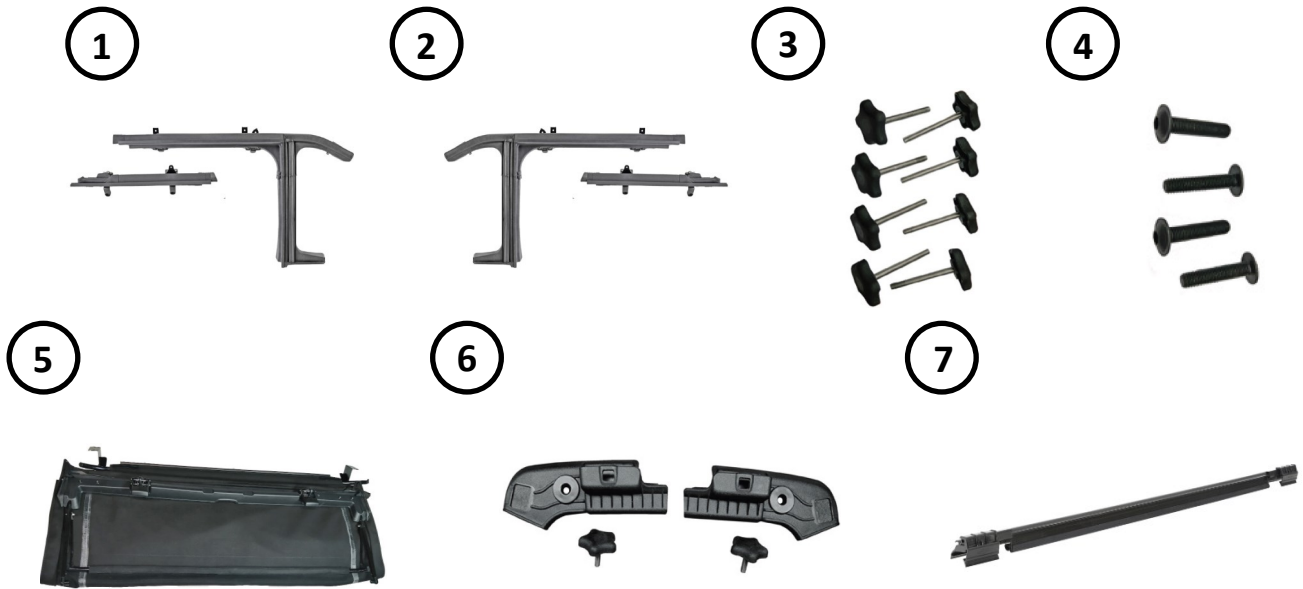
3/8" Ratchet

10mm Socket



For Technical Support / Warranty Information please call 1-888-717-5797  
Smittybilt, 1017 W 600 N, STE 4, Ogden, UT 84404

## Box Contents & Technical Information

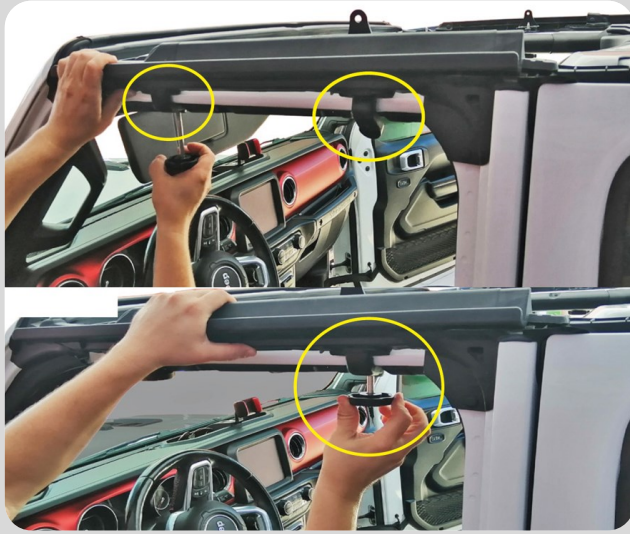


ID	Part Description	QTY
1	Driver Side Door Surround	1
2	Passenger Side Door Surround	1
3	Door Surround Knob	8
4	Door Surround Screws	4
5	Top Deck/Header and Rear Bow Assembly	1
6	Tailgate Bar Retainer w/ Knob	2
7	Tailgate Bar	1
	Driver Side Rear Window	1
	Passenger Side Rear Window	1
	Rear Window	1
	Rear Main Bracket	2
	Center Bow Assembly	2
	Rear Bracket Screw w/ Nut	4
	Bracket Screw	8
	Door Surround Bracket	4
	Door Surround Rubber Trim	2
	4mm Allen Wrench	1



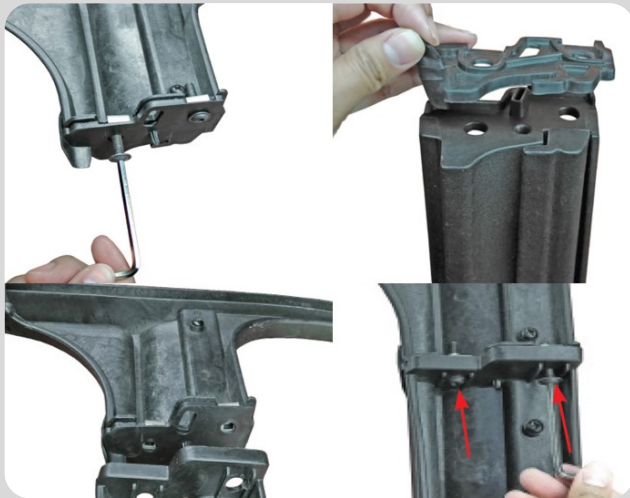
For Technical Support / Warranty Information please call 1-888-717-5797  
Smittybilt, 1017 W 600 N, STE 4, Ogden, UT 84404

## Installation Instructions: JLU Square Back Top Kit



### Step 1:

Locate (2) Door Surround Knobs and the front section of the Driver Side Door Surround. Align the front section holes with the vertical holes in the horizontal roll bar, then insert the knobs through the surround brackets, using a rolling motion for easier installation. Loosely tighten the knobs, and repeat on the passenger side.



### Step 2:

Locate the rear door and pillar sections of the Driver Side Door Surround, Door Surround Seal, and the 4mm Allen wrench. Remove the two screws from the rear door section, place the seal between the rear door and pillar sections. Reinstall the screws and tighten with the 4mm wrench. Repeat for the passenger side.



### Step 3:

Install the rear door surround assembly by aligning the two bottom pins with the holes in the body tub behind the rear door. Repeat for the passenger side.



For Technical Support / Warranty Information please call 1-888-717-5797  
Smittybilt, 1017 W 600 N, STE 4, Ogden, UT 84404

## Installation Instructions: JLU Square Back Top Kit



### Step 4:

Line up the rear section with the previously installed front section of the door surrounds. Be sure both sections are level before continuing. Repeat for the passenger side.



### Step 5:

Secure the rear section to the roll bar using (2) Door Surround Knobs as shown. Repeat for the passenger side.



### Step 6:

Locate the Tailgate Bar Retainers and (2) Tailgate Bar Retainer Knobs. Then, line up with the corner of the body tub. Secure the retainer to the tub using the knob by threading it into the existing hole and tighten. Repeat this procedure on the passenger side.



For Technical Support / Warranty Information please call 1-888-717-5797  
Smittybilt, 1017 W 600 N, STE 4, Ogden, UT 84404

## Installation Instructions: JLU Square Back Top Kit



### Step 7:

Locate Center Bow #1, identified by its label. Loosen the screws on the top brackets of the Door Surrounds. With a helper, place the quick-release end over the second vertical bracket, pull the knob, and push down until it clicks into place. Tighten the bow mount bracket on the Door Surrounds. Repeat on the other side, then install Center Bow #2 the same way. Finally, tighten all Door Surround Knobs to secure both bows.



### Step 8:

Locate the driver-side rear main bracket. On the rear sport bar, remove the factory-installed plastic cover by pulling it off—it's held in place by two metal clips.



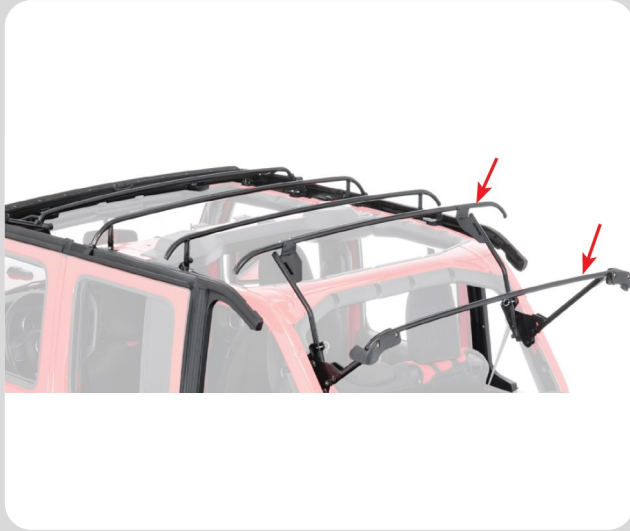
### Step 9:

Line up the driver-side rear main bracket with the holes on the sport bar. Insert the M8 screws and use the included 4mm Allen wrench to tighten the bracket securely. Repeat this process on the passenger side.



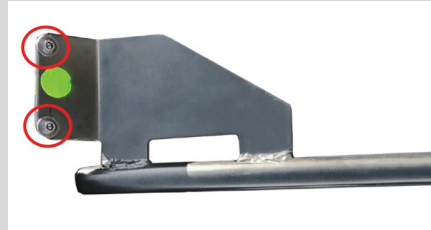
For Technical Support / Warranty Information please call 1-888-717-5797  
Smittybilt, 1017 W 600 N, STE 4, Ogden, UT 84404

# Installation Instructions: JLU Square Back Top Kit



## Step 10:

Locate rear Bow #1 and the driver-side rear leg bracket #1, which was installed earlier on the driver-side rear main bracket. You'll find a pair of screws and nuts pre-installed on the rear leg bracket from the factory. Remove these using a 10mm socket wrench and the included 4mm Allen wrench, and set them aside. Repeat this process on the passenger side.



## Step 11:

Line up the driver-side rear leg #1 with rear Bow #1. Insert the screws and nuts, then tighten them using the included 4mm Allen wrench. Once secured, fold rear Bow #1 and rear leg #1 forward. Repeat this process on the passenger side of the vehicle.



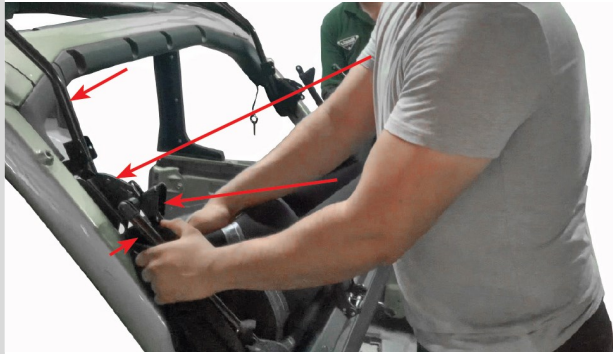
## Step 12:

In the driver-side rear main bracket, there is a screw and nut pre-installed at the factory. Remove this screw and nut, and set them aside.



For Technical Support / Warranty Information please call 1-888-717-5797  
Smittybilt, 1017 W 600 N, STE 4, Ogden, UT 84404

## Installation Instructions: JLU Square Back Top Kit



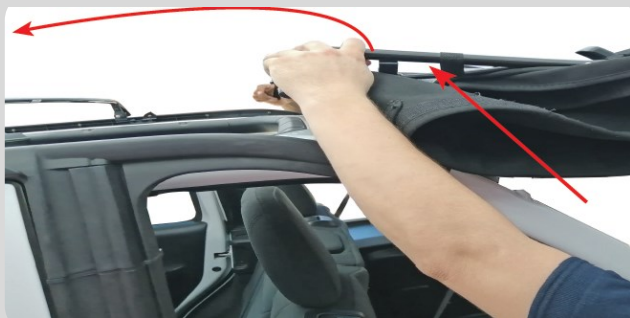
### Step 13:

With the help of a friend, carefully remove the top deck assembly from the box by holding the rear legs #2 and the bow arms attached to the front of the windshield header. Gently lay the assembly down on the back of the Jeep.



### Step 14:

Make sure the holes in rear leg #2 and the main bracket are properly aligned. Insert the screw and nut that were previously removed, then tighten and secure the bracket using a 10mm socket and the included 4mm Allen wrench. Repeat this procedure on the other side of the vehicle.



### Step 15:

With the help of a friend, lift each bow leg and position it over the front bow mount bracket located on top of the door surround. Make sure the bow arms are aligned properly for installation.



For Technical Support / Warranty Information please call 1-888-717-5797  
Smittybilt, 1017 W 600 N, STE 4, Ogden, UT 84404

## Installation Instructions: JLU Square Back Top Kit



### Step 16:

Once rear Bow #1 is securely attached to the deck, have a friend assist you in folding rear Bow #1 and rear leg #1 forward. Once in position, insert the pin to secure the rear bow.



### Step 17:

At the front of the top deck, locate the two bow arms attached to the front windshield header. Pull the front header and the top deck fabric forward toward the windshield.



### Step 18:

Fold back the front header to expose the ends of the bow arms.

**Note:** your top will have a zipper for the rear window on the top, image for illustration purposes.



For Technical Support / Warranty Information please call 1-888-717-5797  
Smittybilt, 1017 W 600 N, STE 4, Ogden, UT 84404

## Installation Instructions: JLU Square Back Top Kit



### Step 19:

Once the bow arm is aligned with the bow mount bracket, pull out the quick-release knob and slide the header assembly over the mount until it clicks into place. Use the included 4mm Allen Wrench to tighten the bow mount bracket on the front door surround. The front header should now rest easily on top of the windshield when folded forward. Repeat this process on the other side of the vehicle.



### Step 20:

With the front header folded back toward the rear of the vehicle, locate the spring assembly attached to the over-door cable.



### Step 21:

Before folding the header down to the windshield, ensure that the two front header corner pockets are properly positioned and not lifted over the header. Once confirmed, fold the header down to the windshield.



For Technical Support / Warranty Information please call 1-888-717-5797  
Smittybilt, 1017 W 600 N, STE 4, Ogden, UT 84404

## Installation Instructions: JLU Square Back Top Kit



### Step 22:

With the header resting on the windshield, close the front header latches to secure the front of the top in place.



### Step 23:

Locate the driver-side square bracket on the rear driver door surround. Secure the deck to the bracket by rolling the plastic edge into the slot on the bracket.



### Step 24:

Go inside the vehicle and locate the Front Bow, Center Bow #1, Center Bow #2, and the hook-and-loop flaps sewn into the Top Deck. Wrap these flaps around the front, first, and second bows to secure the top deck to the bows.



For Technical Support / Warranty Information please call 1-888-717-5797  
Smittybilt, 1017 W 600 N, STE 4, Ogden, UT 84404

## Installation Instructions: JLU Square Back Top Kit

### Step 25:

Locate the driver's rear quarter window. Align the driver's side quarter window with the zipper on the deck and zip it closed. Repeat this process on the passenger side of the vehicle.



### Step 26:

Locate the rear window and zip it to the top. Zip the window in completely.



For Technical Support / Warranty Information please call 1-888-717-5797  
Smittybilt, 1017 W 600 N, STE 4, Ogden, UT 84404

## Installation Instructions: JLU Square Back Top Kit

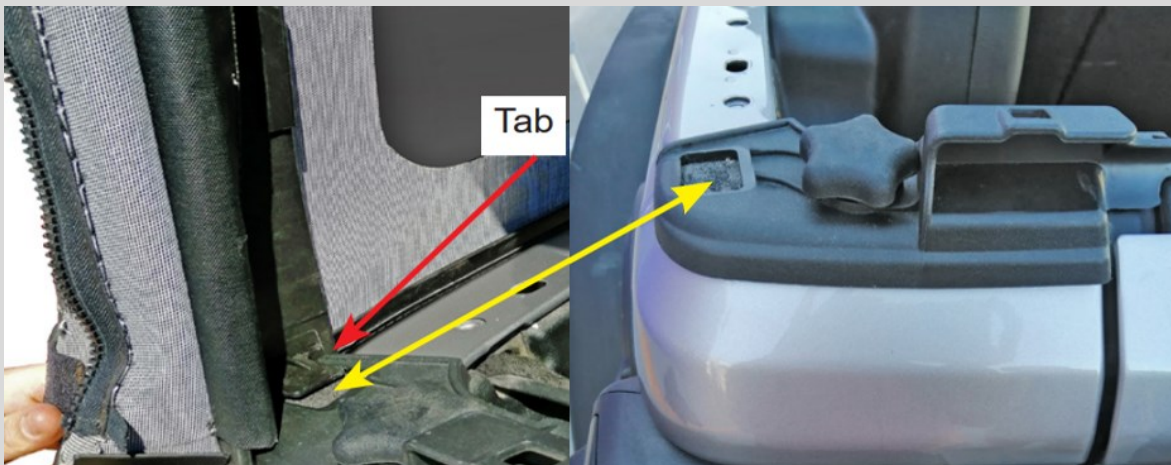
### Step 27:

At the rear of the quarter window, install the corner support. Ensure that the support connects securely with the plastic corner piece located in the upper section of the soft top hardware.



### Step 28:

Once the upper portion is secured, position the bottom of the corner support so that its tab rests on top of the corner bracket mount installed earlier. The corner bracket should seat properly into this tab.



For Technical Support / Warranty Information please call 1-888-717-5797  
Smittybilt, 1017 W 600 N, STE 4, Ogden, UT 84404

## Installation Instructions: JLU Square Back Top Kit



### Step 29:

Once both quarter windows and the upper portion of the rear window are secured to the top deck, align the driver's side rear zipper on the quarter window with the zipper on the rear window and zip them together a few inches.



### Step 30:

Repeat this process on the passenger side of the rear window. You may need to lift the quarter window slightly to secure this second zipper a few inches. Once both side zippers are connected, zip the rear window zippers down about halfway. These zippers will be closed completely at the end of the installation.



### Step 31:

Roll the vertical plastic strip into the slot on the door surround to secure it in place. Repeat this on the passenger side.



For Technical Support / Warranty Information please call 1-888-717-5797  
Smittybilt, 1017 W 600 N, STE 4, Ogden, UT 84404

## Installation Instructions: JLU Square Back Top Kit



### Step 32:

Next, starting at the driver's side front, attach the side belt rail to the vehicle body by rolling the plastic into the slot. You may need to pull the corners forward or backward to properly center the top on the vehicle. Repeat this process on the passenger side, ensuring the top is centered over the rear bow.



### Step 33:

Seal the hook-and-loop fasteners around the rear and quarter windows.



### Step 34:

Take the tailgate bar and position it so that the "C"-channel is facing downward with the round seal on the bottom. Slide the "C"-channel onto the rear window retainer until it is fully seated.



For Technical Support / Warranty Information please call 1-888-717-5797  
Smittybilt, 1017 W 600 N, STE 4, Ogden, UT 84404

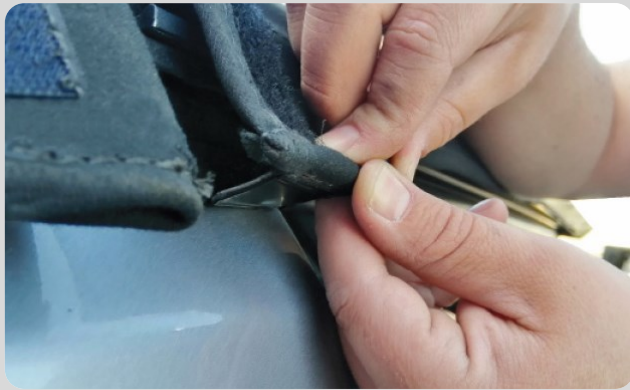
## Installation Instructions: JLU Square Back Top Kit



### Step 35:

After sliding the retainer completely through the “C”-channel, roll the tailgate bar into the mounts, making sure the outside of the fabric faces toward the rear of the vehicle.

Once the tailgate bar is secure, lower the zippers on both sides of the rear curtain.



### Step 36:

Then, move to the rear driver's side corner and roll the plastic edge into the corner mount. Secure the rear zipper cover flap. Repeat this procedure on the passenger side.

**Installation is now complete!**



For Technical Support / Warranty Information please call 1-888-717-5797  
Smittybilt, 1017 W 600 N, STE 4, Ogden, UT 84404

## Fold Back Instructions: JLU Square Back Top Kit



### Option #1 – Front Section :

Unlatch the two front windshield latches. Push the front header up and over to open the “sunroof.” Secure the two side straps. When the front portion is open, there will be fabric hanging down overhead—this is Option #1, which provides shade while the “sunroof” is open. Make sure the two side straps are tightened around the two bows.



### Option #2 - Front Section:

For the next position, slide the two side straps forward toward the header. Then, push the front bow into the center of the folded-back “sunroof” and tuck or fold it under the header. This will fully open the “sunroof.”



For Technical Support / Warranty Information please call 1-888-717-5797  
Smittybilt, 1017 W 600 N, STE 4, Ogden, UT 84404

## Fold Back Instructions: JLU Square Back Top Kit



### Option #3 - Rear Section:

Begin by unlatching the front header latches and opening the front section. Unhook the two quick-release knobs at the ends of the header arms, followed by the four quick-release knobs on Bow #1 and Bow #2, leaving both bows encased in the hook-and-loop flaps. With assistance, carefully fold the front header and bows back, layering them under the fabric. Then, connect the front bow arms to the rear-most (third) bow mount brackets. This creates a fully retracted, layered configuration that opens up the entire top while keeping it neatly secured.



### Option #4 - Rear Section:

With the entire fabric assembly already layered back from Option #3, continue folding and securing the material so that everything, including the header and bows, is fully stowed and attached to the rear brackets. This creates the most open configuration, with the top fully folded back and secured for maximum open-air driving.



**WARNING** Before driving, ensure the front header arms are securely attached to the third bow mount bracket, and that the fabric and bows are properly layered back. Additionally, make sure both front header straps are fastened tightly. Failure to secure the bow mounts and straps may result in the top coming loose or detaching while driving, causing damage to the top, your vehicle, and posing a hazard to other vehicles on the road.



For Technical Support / Warranty Information please call 1-888-717-5797  
Smittybilt, 1017 W 600 N, STE 4, Ogden, UT 84404

## Fold Back Instructions: JLU Square Back Top Kit



### Option #5 - Fully Open:

To fold back the entire top assembly toward the rear of the vehicle and secure it, first remove the rear and quarter windows from your soft top. Unlatch the quick release knobs on both sides of the front, Center #1, and Center #2 bows, and unhook the pin securing the rear leg. With the help of a friend, carefully fold back the entire top, tucking it under itself toward the rear of the vehicle. Make sure the front header tubes and front header are securely positioned inside the vehicle.



### Option #5 - Fully Open - Continued:

To secure your soft top, locate the two side tension straps. Hook one end of each strap under the belt rail, then thread the other end through the strap sewn onto the top for shipping, which is located on the front leg. Pass the strap through the buckle and tighten to secure. Repeat this process on the other side of the vehicle.

**WARNING** Before driving, ensure the front header arms are securely attached to the third bow mount bracket, and that the fabric and bows are properly layered back. Additionally, make sure both front header straps are fastened tightly. Failure to secure the bow mounts and straps may result in the top coming loose or detaching while driving, causing damage to the top, your vehicle, and posing a hazard to other vehicles on the road.

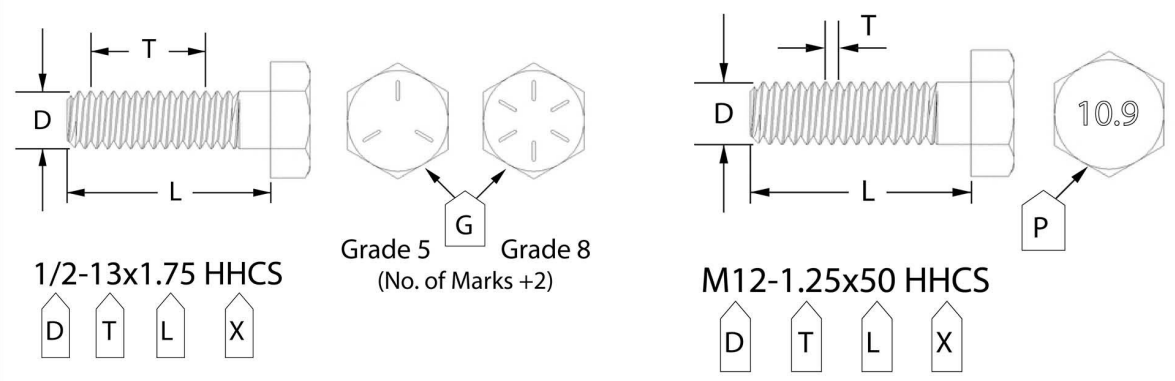


For Technical Support / Warranty Information please call 1-888-717-5797  
Smittybilt, 1017 W 600 N, STE 4, Ogden, UT 84404

# Bolt Torque Specifications

Use this only as a guide for hardware without a called out torque specification in the instruction manual.

<b>Bolt Torque and ID</b>						
Decimal System			Metric System			
<i>All Torques in Ft. Lbs. Maximums</i>						
Bolt Size	Grade 5	Grade 8	Bolt Size	Class 9.8	Class 10.9	Class 12.9
5/16	15	20	M6	5	9	12
3/8	30	45	M8	18	23	27
7/16	45	60	M10	32	45	50
1/2	65	90	M12	55	75	90
9/16	95	130	M14	85	120	145
5/8	135	175	M16	130	165	210
3/4	185	280	M18	170	240	290



<p>G= Grade (Bolt Strength)</p> <p>D= Nominal Diameter (Inches)</p> <p>T= Thread Count (Threads per Inch)</p> <p>L= Length (Inches)</p> <p>X= Description (Hex Head Cap Screw)</p>	<p>P= Property Class (Bolt Strength)</p> <p>D= Nominal Diameter (Millimeters)</p> <p>T= Thread Pitch (Thread Width, mm)</p> <p>L= Length (Millimeters)</p> <p>X= Description (Hex Head Cap Screw)</p>
--	---

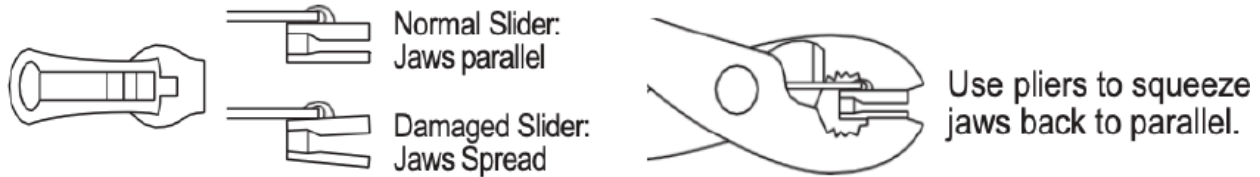


For Technical Support / Warranty Information please call 1-888-717-5797  
Smittybilt, 1017 W 600 N, STE 4, Ogden, UT 84404

# Notes and Disclaimers

## Product cleaning and maintenance instructions

**Washing** - The soft top fabric should be cleaned regularly using mild soap and warm water. After washing, rinse thoroughly with clear water to remove all soap residue and prevent buildup. **Water/Fabric** - If you notice seepage through the seams, applying a seam sealer like 3M Scotchgard® on the inside of the seams can help stop leaks. Small rips in the fabric can be repaired using iron-on patches, such as Bondex®. Apply the patches to the inside of the top carefully following the patch manufacturer's instructions. **Windows** - Keeping your soft top windows clean is very important. Use a mild soap and water solution to gently clean the windows. Avoid wiping them dry with a cloth, as dust and dirt can cause scratches and permanent damage. When removing windows, store them with a towel to protect the surface. If frost or ice forms on the outside during cold weather, do not use an ice scraper, as this can cause micro scratches over time. These scratches are normal wear but can be polished out with a specialized window polish. **Zippers** - To keep your zippers functioning smoothly and prevent damage, regularly clean them and apply a silicone-based lubricant. If the zipper opens behind the slider, the slider may have become slightly spread apart. You can usually fix this by gently squeezing the slider sides back into alignment using a pair of pliers. First, move the slider to the end of the zipper in the normal open position. Lightly squeeze the slider with the pliers and test the zipper. If it still opens behind the slider, apply a firmer squeeze and test again. Repeat this process until the zipper operates properly.



### SMITTYBILT ADVANTAGE WARRANTY

#### 1-Year Limited Warranty

Smittybilt Automotive Products, LLC (SAP) warrants to the original purchaser that the physical components of the **JLU Square Back Top Kit** will be free from defects in material and workmanship for one year from the date of purchase. This warranty is limited to the original purchaser and is non-transferable.

To obtain warranty service, proof of purchase must be provided. SAP, at its sole discretion, will replace defective parts within the warranty period. Labor for part replacement is not covered.

This warranty does not cover wear items or damage caused by abuse, misuse, collision, modification, improper installation, or improper maintenance. The warranty is void if any SAP serial number is removed or defaced, or if the product is used commercially, industrially, or as a rental.

This warranty applies only to products purchased and used within the United States or Canada unless otherwise agreed in writing by SAP. THE WARRANTY SET FORTH ABOVE IS THE ONLY WARRANTY. THERE ARE NO OTHER WARRANTIES, EXPRESSED OR IMPLIED, INCLUDING BUT NOT LIMITED TO IMPLIED WARRANTIES OF MERCHANTABILITY OR FITNESS FOR A PARTICULAR PURPOSE. ANY IMPLIED WARRANTY WHICH BY LAW MAY NOT BE EXCLUDED IS LIMITED TO A DURATION OF ONE (1) YEAR FROM THE DATE OF ORIGINAL RETAIL PURCHASE OF THE PRODUCT. No SAP dealer, agent, or employee is authorized to make any modification, extension or addition to this warranty. SAP SHALL NOT BE LIABLE FOR SPECIAL, INDIRECT, INCIDENTAL OR CONSEQUENTIAL DAMAGES (INCLUDING, BUT NOT LIMITED TO, LOST PROFITS, DOWN TIME OR LOSS OF USE) UNDER ANY LEGAL THEORY, EVEN IF SAP WAS ADVISED OF THE POSSIBILITY OF SUCH DAMAGES. Some states do not allow the exclusion of implied warranties or the exclusion or limitation of liability for incidental or consequential damages, or limitations on how long an implied warranty lasts, so the above limitation or exclusion may not apply to you. This Warranty gives you specific legal rights. You may also have other rights that vary from state to state. SAP reserves the right to change product design without notice. In situations in which SAP has changed a product design, SAP shall have no obligation to upgrade or otherwise modify previously manufactured products. For warranty inquiries contact SAP at:

Smittybilt Automotive Products, LLC

Customer Service Department

Call 1-888-717-5797 or Email [info@smittybilt.com](mailto:info@smittybilt.com)



For Technical Support / Warranty Information please call 1-888-717-5797  
Smittybilt, 1017 W 600 N, STE 4, Ogden, UT 84404