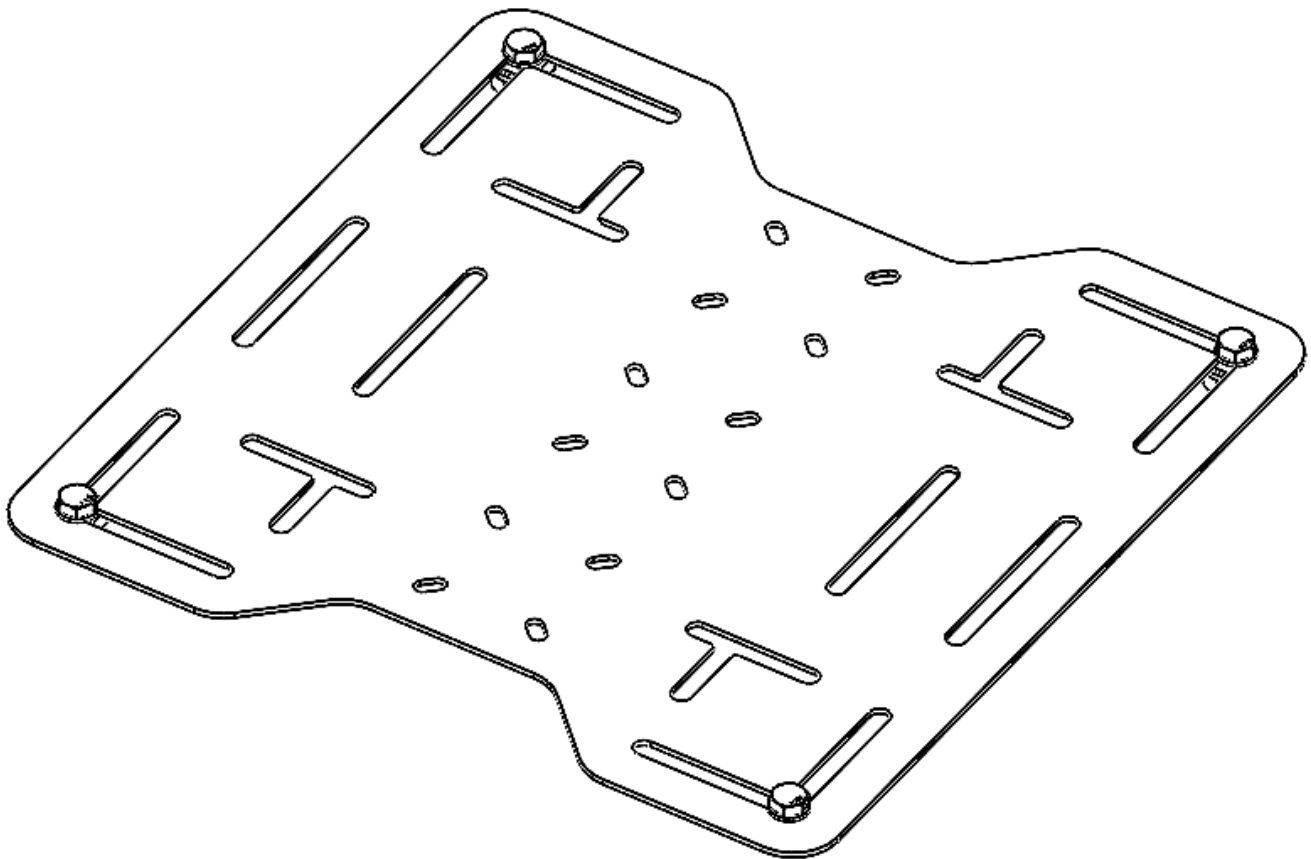


Installation Instructions



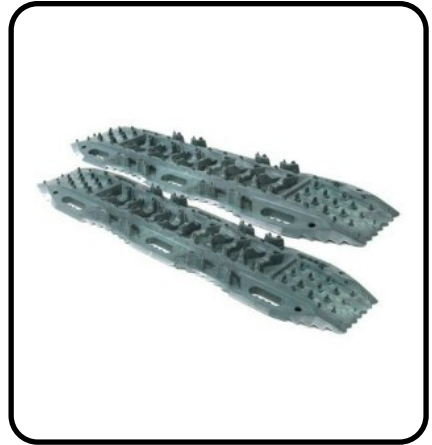
Defender Platform Universal Accessory Mount S/BDP801



For Technical Support / Warranty Information please call **800-776-0767 EXT 1317**
Smittybilt, 400 W Artesia, Compton, CA 90220

Introduction

Thank you for choosing Smittybilt accessories for your Defender Platform. If you would like to view our full range of available accessories, please visit us at www.smittybilt.com



Important Notes Before Starting



IMPORTANT NOTE

Carefully read through this entire instruction manual thoroughly before attempting to install this part.



WARNING

Serious injury can occur when working on vehicles alone.

When possible, work with another person to reduce risk of injury from strain or other dangers that can occur when working alone.

The following tools will be required to complete the installation of this part:

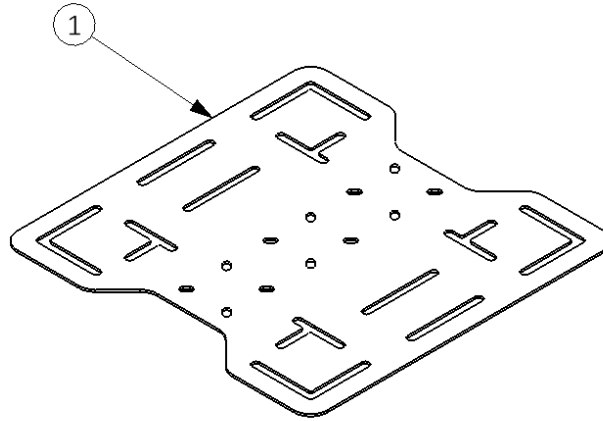
TOOLS REQUIRED

Socket Wrench	16mm Socket	16mm Wrench
---------------	-------------	-------------



For Technical Support / Warranty Information please call 800-776-0767 EXT 1317
Smittybilt, 400 W Artesia, Compton, CA 90220

Box Contents & Technical Information



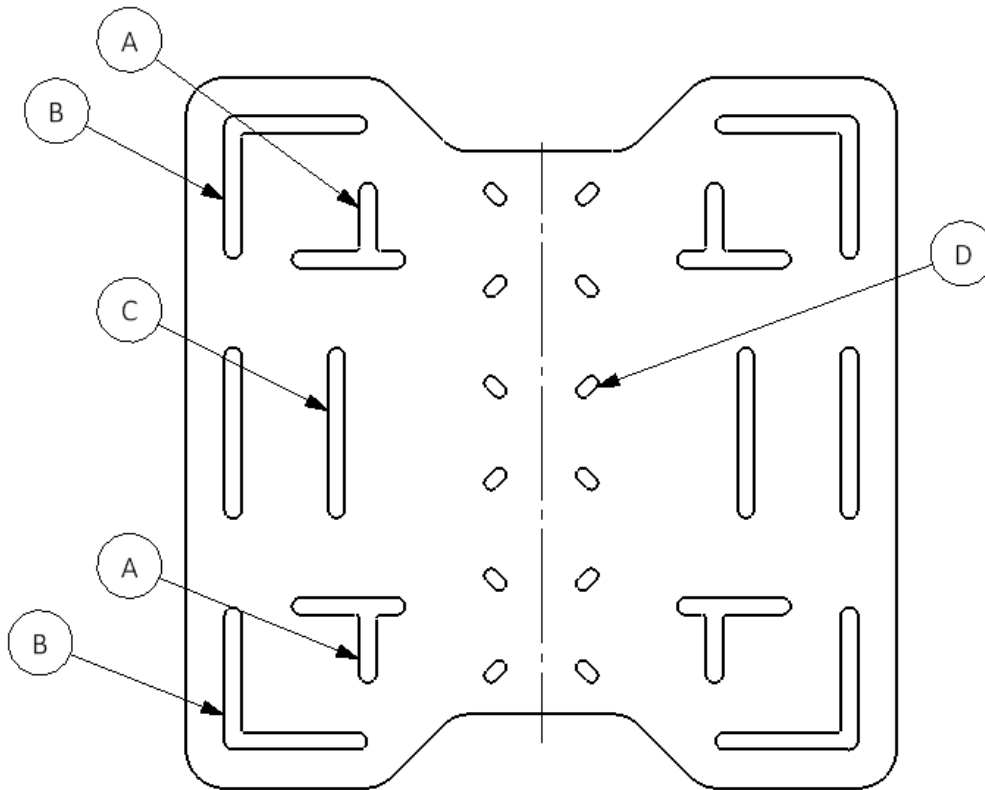
Universal Accessory Mount		
BUBBLE	DESCRIPTION	QTY
1	Universal Accessory Mounting Plate	1

Universal Accessories Plate Mounting Hardware	
DESCRIPTION	QTY
M10X1.5 Channel Nut	4
M10X1.5X16 HHCS GR10.9 CZ	4
M10 Flat WSHR GR8.8 CZ	4



For Technical Support / Warranty Information please call 800-776-0767 EXT 1317
Smittybilt, 400 W Artesia, Compton, CA 90220

Box Contents & Technical Information



Universal Accessory Mount	
BUBBLE	DESCRIPTION
A	S/B RECOVERY BOARDS MOUNTS
B	DEFENDER PLATFORM MOUNTS
C	MAXTRAX MOUNTS
D	LIQUID STORAGE MOUNT



IMPORTANT NOTE

Recovery board and MAXTRAX mounts can only be used when using (2) Universal Accessory Mounts. Hardware not included.



For Technical Support / Warranty Information please call 800-776-0767 EXT 1317
Smittybilt, 400 W Artesia, Compton, CA 90220

Installation Instructions: Mechanical Installation

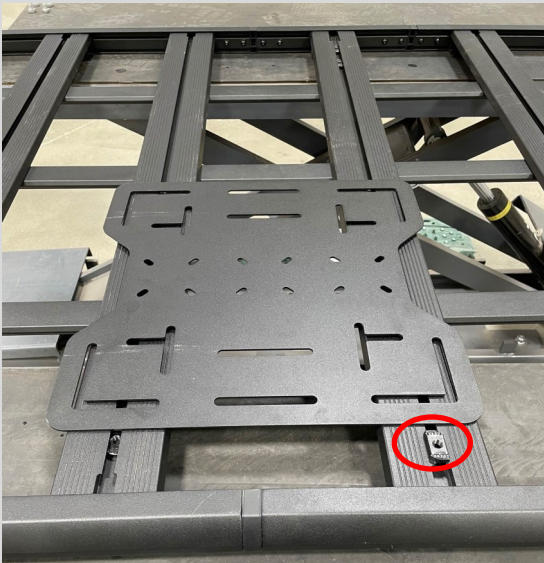


MECHANICAL INSTALLATION

Step 1:

Plan out which accessories will be mounted onto the Defender Platform. Estimate the amount of space allocated to each product.

Note: Do your best to evenly distribute weight across the Defender Platform.



Step 2:

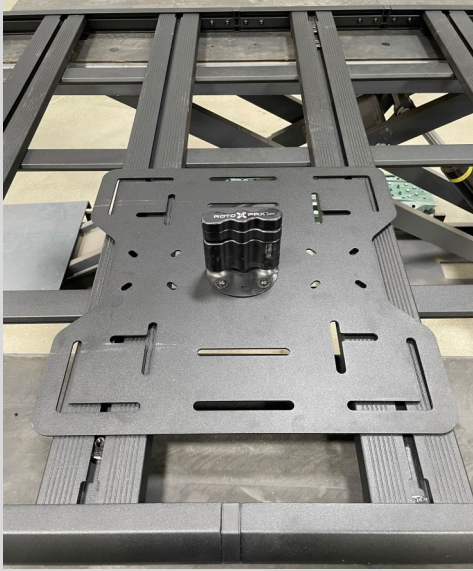
Insert **(4)** M10 channel nuts into the desired mounting locations through the open slot in the extrusion. Do not fasten any hardware yet.

Note: Prototype depicted, actual production part may be different.



For Technical Support / Warranty Information please call 800-776-0767 EXT 1317
Smittybilt, 400 W Artesia, Compton, CA 90220

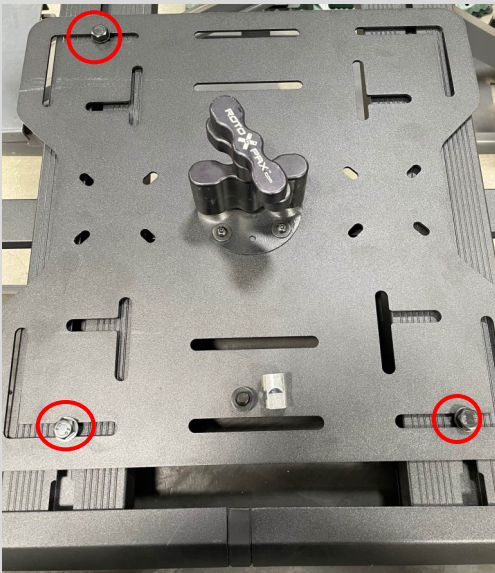
Installation Instructions: Mechanical Installation



Step 3:

Begin attaching accessories to universal plate using hardware provided with the accessory. When satisfied with the accessory location bolt the accessory down to the universal plate.

Note: Take full advantage of any available slots in the Universal Accessory mounting plate. Accommodate any accessory by creating your own mounting pattern!



Step 4:

Add (4) M10X16mm Hex bolts and (4) M10 Flat Washers to the plate and secure them to the M10 Channel Nuts previously inserted. Tighten all hardware and torque to spec. refer to page 7.

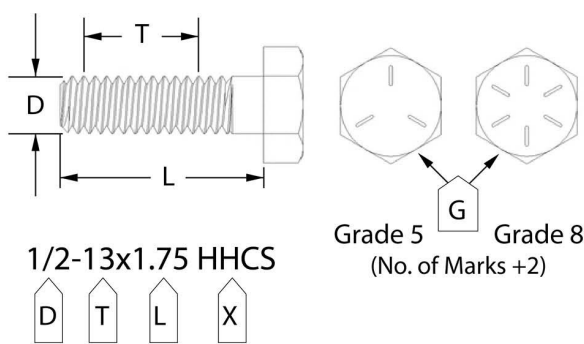


For Technical Support / Warranty Information please call 800-776-0767 EXT 1317
Smittybilt, 400 W Artesia, Compton, CA 90220

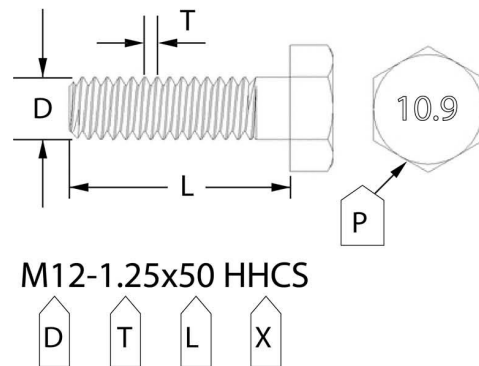
Bolt Torque Specifications

Use this only as a guide for hardware without a called out torque specification in the instruction manual.

Bolt Torque and ID						
Decimal System			Metric System			
All Torques in Ft. Lbs. Maximums						
Bolt Size	Grade 5	Grade 8	Bolt Size	Class 9.8	Class 10.9	Class 12.9
5/16	15	20	M6	5	9	12
3/8	30	45	M8	18	23	27
7/16	45	60	M10	32	45	50
1/2	65	90	M12	55	75	90
9/16	95	130	M14	85	120	145
5/8	135	175	M16	130	165	210
3/4	185	280	M18	170	240	290



G= Grade (Bolt Strength)
D= Nominal Diameter (Inches)
T= Thread Count (Threads per Inch)
L= Length (Inches)
X= Description (Hex Head Cap Screw)



P= Property Class (Bolt Strength)
D= Nominal Diameter (Millimeters)
T= Thread Pitch (Thread Width, mm)
L= Length (Millimeters)
X= Description (Hex Head Cap Screw)



For Technical Support / Warranty Information please call 800-776-0767 EXT 1317
Smittybilt, 400 W Artesia, Compton, CA 90220

Notes and Disclaimers

Product cleaning and maintenance instructions

Stainless Steel Finish – Aluminum polish may be used to polish small scratches and scuffs on the finish. Mild soap, window or glass cleaner may be used to clean the finish. Dual state powder coat finish – Mild soap, window or glass cleaner may be used to clean the finish. In order to protect the finish, you may wax your product on a regular basis with pure carnauba automotive wax. Do not use any types of soap, polish or wax that contains abrasive that could damage the finish. Textured coated finishes should be cleaned with a mild soap on a damp sponge. Do not apply polish or wax that requires to be removed by means of buffing. This type of wax is commonly used at car wash facilities. Chrome Finish – Mild soap, window or glass cleaner may be used to clean the finish. In order to protect the finish, you should wax your product on a regular basis with pure carnauba automotive wax. Do not use any types of soap, polish or wax that contains abrasive that could damage the finish.

Limited Warranties

Smittybilt's products are covered under the following limited warranties only. Note that the duration of the limited warranty differs according to the material and finish of the product purchased. Subject to the duration and conditions of the limited warranty stated below, Smittybilt warrants to the original retail purchaser that its products are free from defects in material and workmanship. All other warranties and representations express or implied, are hereby disclaimed, including fitness for merchantability and buyer's intended use or purpose. All parts are sold "AS IS" except for the limited warranties granted herein. Buyer assumes all risks as to the selection, suitability and performance of all goods and products selected. This limited warranty does not cover damage or impairment in any part due to misuse, improper installation, accident or contact with on-road or off-road hazards, product modification, improper or inadequate cleaning and/or maintenance. Smittybilt is not responsible for items damaged during shipping. This warranty is not transferable from the original buyer. For the original Buyer to be eligible for the limited warranty coverage, the Buyer must provide proof of purchase. Smittybilt strongly recommends returning the warranty registration card. Customer's remedy hereunder shall be limited only to repair or replacement (at Smittybilt's option) of any defective part(s) returned to Smittybilt at customer's expense. The determination of whether or not a returned part is defective or subject to coverage under the limited warranties stated herein shall be made at Smittybilt's sole discretion. To assure product quality, Smittybilt reserves the right to change product design, material, specification and finishes without prior notice to customers. This limited warranty gives you specific legal rights and you may also have other rights, which may vary from state to state. Some states do not allow limitations on how long an implied warranty lasts, so the above limitations may not apply as to you. Also, some states do not allow the exclusion or limitation of incidental or consequential damages, so the above limitations or exclusions may not apply to you. Smittybilt reserves the right to discontinue product lines and substitute products or provide other remedies than those listed in this limited warranty for those discontinued products.

Warning

Rollover and other types of vehicle accidents may result in serious injury or death to you, your passengers and others sharing the road. Smittybilt accessories are decorative and are not intended to reduce or avoid injury or damage in the event of an accident. The weight and location of Smittybilt accessories may affect your vehicles' handling, stability and performance, creating an increased risk of accident or rollover. Before installing any accessory, check state laws and assure that the accessory will not obscure any lights or interfere with proper operation on your vehicle's safety equipment. Consult your owner's manual and the Smittybilt instructions, or additional safety information. Smittybilt products, nor the warnings contained herein, are not a substitute for your safe driving. Don't drink and drive, always use seat belts and don't drive faster than conditions permit.



WARNING: Cancer and Reproductive Harm
www.P65Warnings.ca.gov



For Technical Support / Warranty Information please call 800-776-0767 EXT 1317
Smittybilt, 400 W Artesia, Compton, CA 90220