



GET THE ORIGINAL

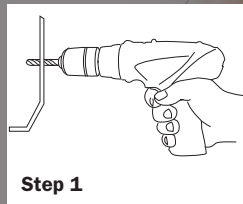
NEW PRODUCTS ANNOUNCEMENT

04.17

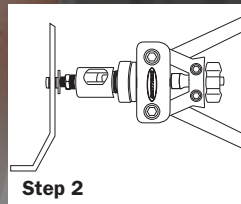
PROFESSIONAL GRADE NUTSERT INSTALLATION TOOL KIT



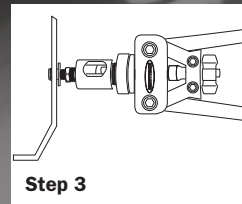
Makes installing Nutserts quick and easy



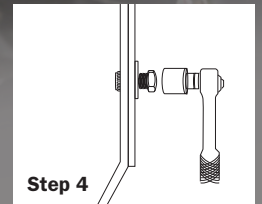
Step 1



Step 2



Step 3



Step 4

INCLUDED MANDRELS

STANDARD



1/4-20"



5/16-18"



3/8-16"

METRIC



M6 - 6mm
1.0



M8 - 8mm
1.25



M10 - 10mm
1.50

Perfect tool to install the following Smittybilt products:

M6-10	Your choice
M8-125	Flux Flares (76839)
M10-15	XRC Body Cladding (76886,76887) XRC Rock Sliders (76888,76889,76853) XRC Armor (76880,76881,76882) XRC Tailgate table (2793) Exoskeleton (76840,76841) XRC Armor Skins (76980,76981,76982)

10 PIECE KIT

- 1-Nutsert installation tool
- 3-SAE Mandrels
- 3-Metric Mandrels
- 2-Mandrel lock pins
- 1-Mandrel quick change tool



New "Quick-change head" design allows for easy changing of mandrels and nose pieces. Unique spring loaded mandrel automatically locks the mandrel lock pin for the fastest mandrel changes on the market.

Description	Part#	Jobber	MSRP	Canada
Professional Grade Nutsert Installation Tool Kit	2834	\$41.99	\$41.99	\$57.99