

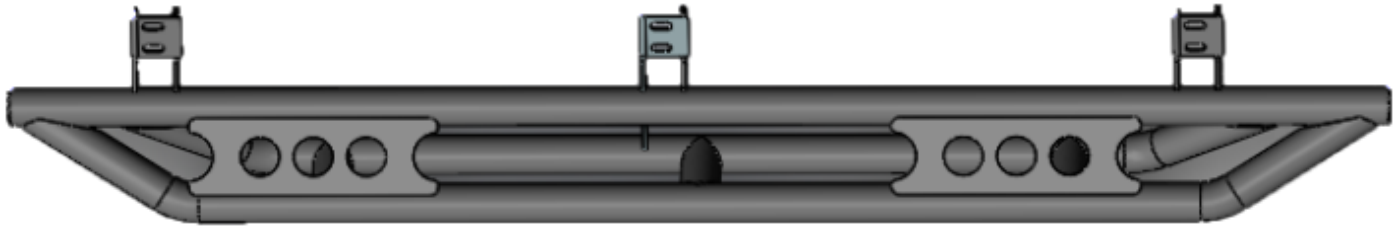


WWW.SMITYBILT.COM

**SRC Side Armor
2014+ 4-Runner
Trail Edition/SR5/TRD
Part # 78634**

Parts list:	Qty
Side armor	L&R
M8 hex bolt	10
M8 lock washer	10
M8 flat washer	10

Note: Actual pictures may vary from specific vehicle/ product.
Photos are of passenger side install.



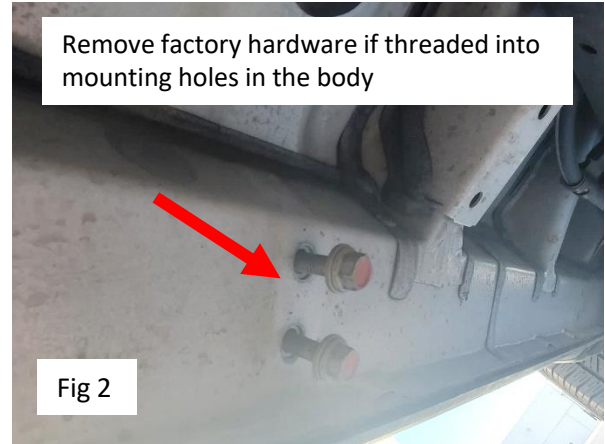
For Technical Support/Warranty Information please call 310-762-9944

Smittybilt, 400 West Artesia Blvd, Compton, CA 90220

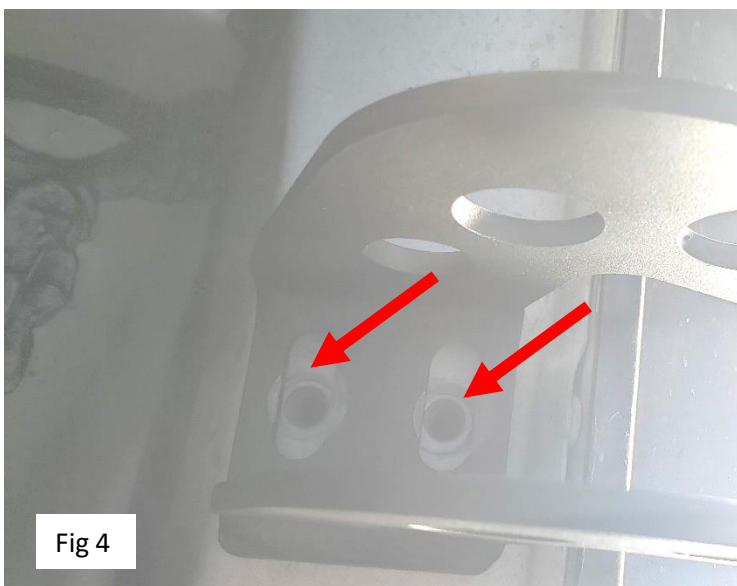


**SRC Side Armor
2014+ 4-Runner
Trail Edition/SR5/TRD
Part # 78634**

Step 1. Carefully remove bars from their box and locate the hardware kit. Remove any factory hardware on the vehicle. You may reuse factory hardware or you may use hardware supplied with the kit. Fig 1 and 2.



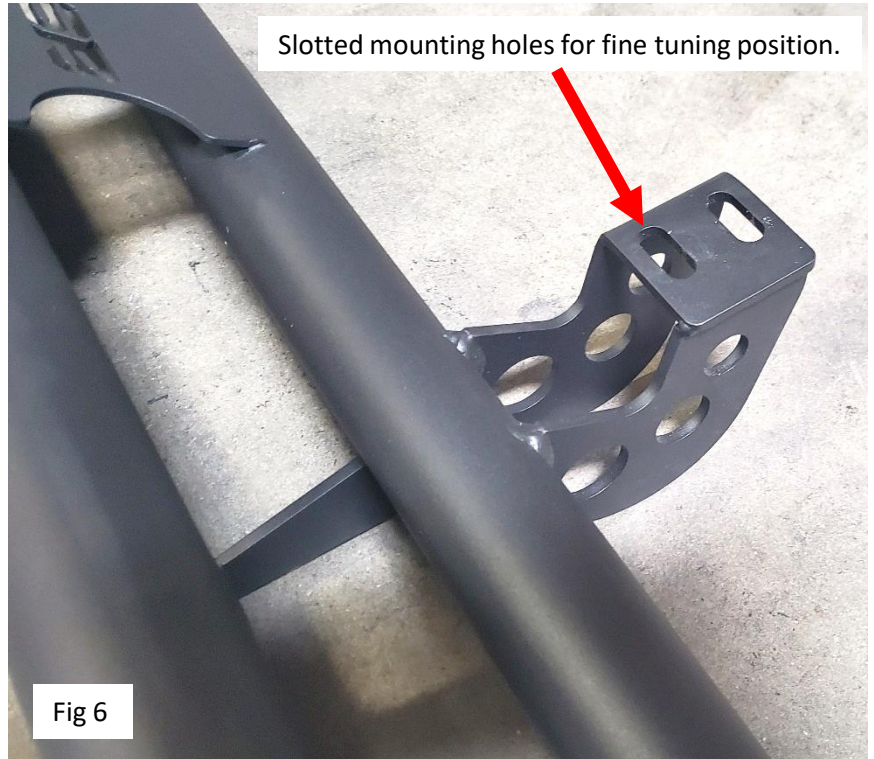
Step 2. Position step so that the logo is at the rear door. Test fit the nerf bars to the factory hole locations. Fig 3 and 4.



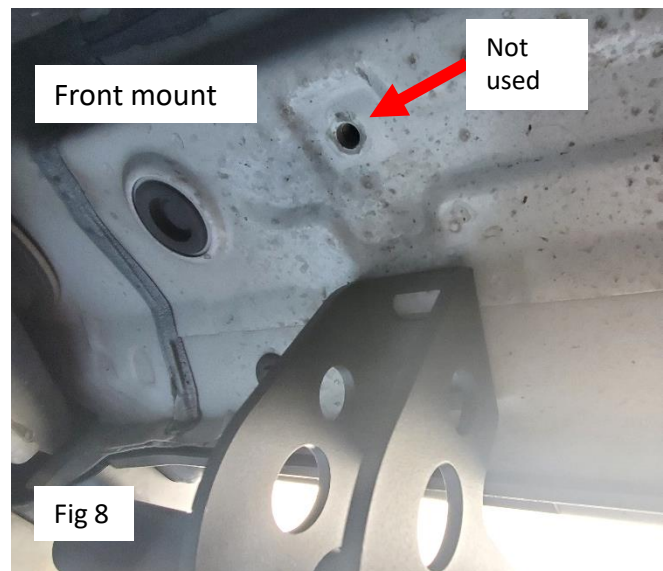
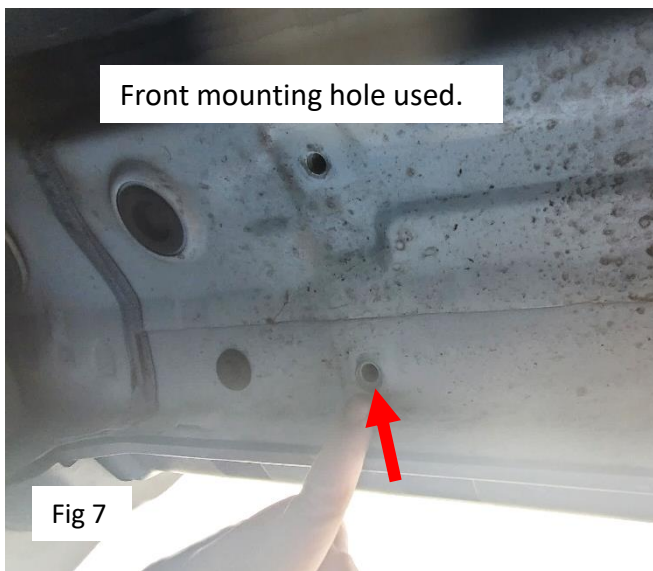


**SRC Side Armor
2014+ 4-Runner
Trail Edition/SR5/TRD
Part # 78634**

Step 3. Starting with the center bracket, start by installing a M8 bolt, lock washer, and flat washer into the factory bolt location. Fig 5. **Note:** You may also use the factory hardware if your vehicle had running boards or hardware installed from the factory. Do not fully tighten, leave bolt looses enough to allow for adjustment. Install the remaining hardware in all mounting locations.



Note: The front mount will only line up with one of the factory mounting holes. Fig 7 and 8.





**SRC Side Armor
2014+ 4-Runner
Trail Edition/SR5/TRD
Part # 78634**

Step 4. Once hardware has been installed in all locations fine tune position then tighten hardware to 18 ft/lb. Fig 6.

Step 5. Repeat for opposite side of vehicle.

Step 6. Periodically check torque of all mounting hardware.

Note: due to vehicle variances, nerf bar to front mud flap clearance may vary. Mud flap may need to be adjusted to provide added clearance. This can be done by loosening mounting bolts and pushing forward on flap and then tightening bolts while pushing forward. Some cases may need to add a flat washer as a shim to space mud flap forward. This would need to be done on the bottom two mounting bolts.





**SRC Side Armor
2014+ 4-Runner
Trail Edition/SR5/TRD
Part # 78634**

Wash with soap and water only (weekly or bi-weekly). Do not use any harsh chemicals, pressure washing or waxes that leave a residue and need to be buffed off. Do not use any UV protectants that leave a slippery residue.

Limited Warranties

Smittybilt's products are covered under the following limited warranties only. Note that the duration of the limited warranty differs according to the material and finish of the product purchased. Subject to the duration and conditions of the limited warranty stated below, Smittybilt warrants to the original retail purchaser that its products are free from defects in material and workmanship. All other warranties and representations express or implied, are hereby disclaimed, including fitness for merchantability and buyer's intended use or purpose. All parts are sold "AS IS" except for the limited warranties granted herein. Buyer assumes all risks as to the selection, suitability and performance of all goods and products selected. This limited warranty does not cover damage or impairment in any part due to misuse, improper installation, accident or contact with on-road or off-road hazards, product modification, improper or inadequate cleaning and/or maintenance. Smittybilt is not responsible for items damaged during shipping. This warranty is not transferable from the original buyer. For the original Buyer to be eligible for the limited warranty coverage, the Buyer must provide proof of purchase. Smittybilt strongly recommends returning the warranty registration card.

Customer's remedy hereunder shall be limited only to repair or replacement (at Smittybilt's option) of any defective part(s) returned to Smittybilt at customer's expense. The determination of whether or not a returned part is defective or subject to coverage under the limited warranties stated herein shall be made at Smittybilt's sole discretion.

To assure product quality, Smittybilt reserves the right to change product design, material, specification and finishes without prior notice to customers. This limited warranty gives you specific legal rights and you may also have other rights, which may vary from state to state. Some states do not allow limitations on how long an implied warranty lasts, so the above limitations may not apply as to you. Also, some states do not allow the exclusion or limitation of incidental or consequential damages, so the above limitations or exclusions may not apply to you. Smittybilt reserves the right to discontinue product lines and substitute products, or provide other remedies than those listed in this limited warranty for those discontinued products.

Warning

Rollover and other types of vehicle accidents may result in serious injury or death to you, your passengers and others sharing the road. Smittybilt accessories are decorative and are not intended to reduce or avoid injury or damage in the event of an accident. The weight and location of Smittybilt accessories may affect your vehicles' handling, stability and performance, creating an increased risk of accident or rollover. Before installing any accessory, check state laws and assure that the accessory will not obscure any lights or interfere with proper operation on your vehicle's safety equipment. Consult your owner's manual and the Smittybilt instructions, or additional safety information. Smittybilt products, nor the warnings contained herein, are not a substitute for your safe driving. Don't drink and drive, always use seat belts and don't drive faster than conditions permit.